

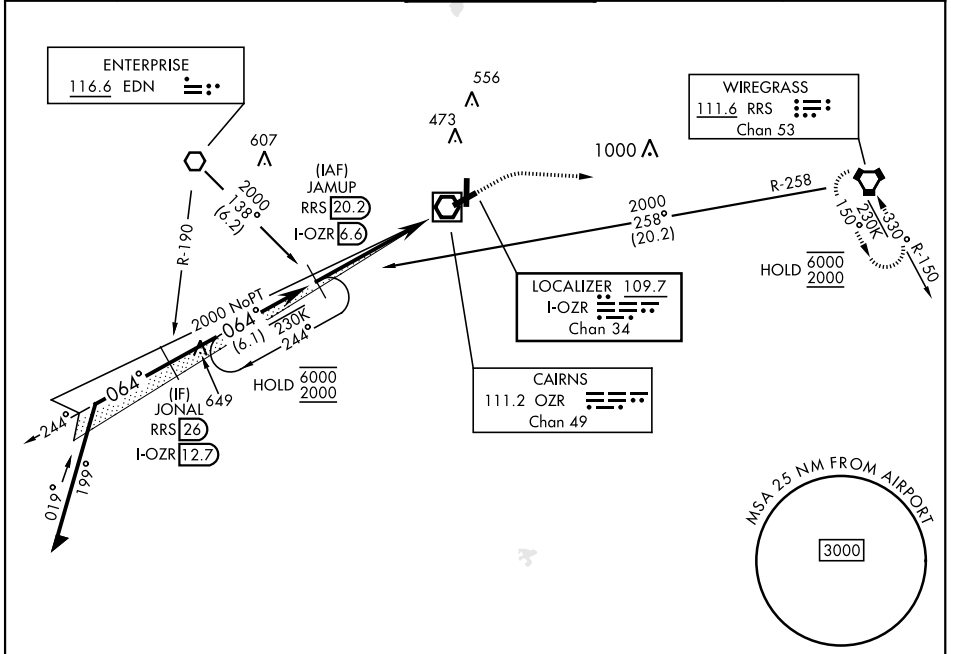
ILS or LOC RWY 6

LOC/DME I-OZR 109.7 Chan 34	APCH CRS 064°	Rwy Idg TDZE Arprt Elev 4546 298 301
---	-------------------------	--

[USA]

CAIRNS AAF (KOZR)

RADAR or DME required *When ALS inop, increase RVR to 40, vis to 3/4 mile. **When ALS inop, increase CAT AB RVR to 55, vis to 1 mile, CAT CD vis to 1 3/8 miles.		MALSR 	MISSED APPROACH: Climb to 800 then climbing right turn to 2000 direct RRS VORTAC and hold; or when directed by ATC, climb to 800 then climbing left turn to 2000 heading 290° within 10 NM (RADAR required).		
ATIS 111.2 316.15	APP CON ★ 021°-120° 125.4 327.125 121°-219° 133.75 270.35 220°-340° 133.45 239.275 341°-020° 121.1 319.25	TOWER ★ 135.2 (CTAF) 248.55	GND CON ★ 121.9 288.25	CLNC DEL ★ 118.075 380.1	



SE-4, 26 DEC 2024 to 23 JAN 2025

SE-4, 26 DEC 2024 to 23 JAN 2025

Remain within 10 NM GS 2.70° TCH 57 6000 2000 2000 244° 064° 2000 244° 5.8 NM	JAMUP RRS 20.2 I-OZR 6.6	800 2000 RRS	ELEV 301 TDZE 298	
	CATEGORY S-ILS 6* S-LOC 6** CIRCLING	A 498/24 780-1 479 (500-1)	B 200 482 (500-1/2) 820-1 519 (600-1)	

ILS or LOC RWY 6