

OPPTO-TWO DEPARTURE (OPPTO2.OPPTO)

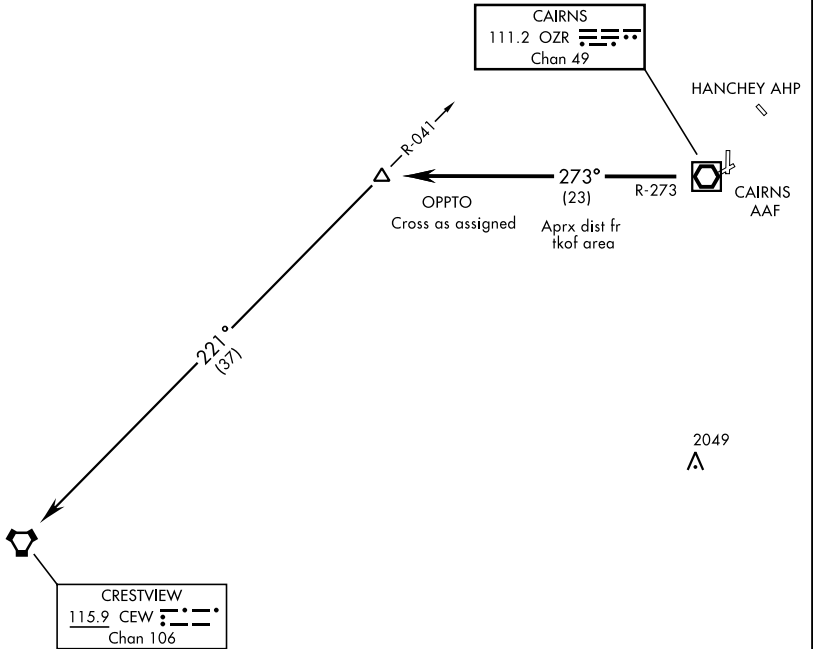
CAIRNS AAF (KOZR)
FORT NOVOSEL, ALABAMA

RADAR required

ATIS 111.2 316.15
CLNC DEL ★
118.075 380.1
GND CON★
121.9 288.25
TOWER ★
135.2 (CTAF) 248.55
DEP CON ★
133.45 239.275
JACKSONVILLE CENTER
134.3 322.55

[USA]

610
●



SE-4, 26 DEC 2024 to 23 JAN 2025

SE-4, 26 DEC 2024 to 23 JAN 2025

DEPARTURE ROUTE DESCRIPTION

- TAKEOFF RWY 6: Climbing left turn heading 270°
- TAKEOFF RWY 18: Climbing right turn heading 205°
- TAKEOFF RWY 24: Climbing right turn heading 300°
- TAKEOFF RWY 36: Climbing left turn heading 270°
- TAKEOFF FROM CENTER OF HELIPAD A: Climb heading 310°
- TAKEOFF FROM CENTER OF HELIPAD D2: Climb heading 360°

Maintain 2000, expect clearance to requested altitude/flight level ten (10) minutes after departure.

Expect RADAR vector to intercept OZR VOR/DME R-273 to OPPTO INT. Thence via Transition.

CRESTVIEW TRANSITION (OPPTO2.CEW): Turn left via CEW R-041 to CEW VORTAC.

OPPTO-TWO DEPARTURE (OPPTO2.OPPTO)

FORT NOVOSEL, ALABAMA
CAIRNS AAF (KOZR)