

FORT NOVOSHEL, ALABAMA

RNAV (GPS) RWY 6

WAAS CH 50537 W06A	APCH CRS 064°	Rwy Idg TDZE Arprt Elev	4546 298 301
--	-------------------------	-------------------------------	---

[USA]

CAIRNS AAF (KOZR)

RNP APCH - GPS



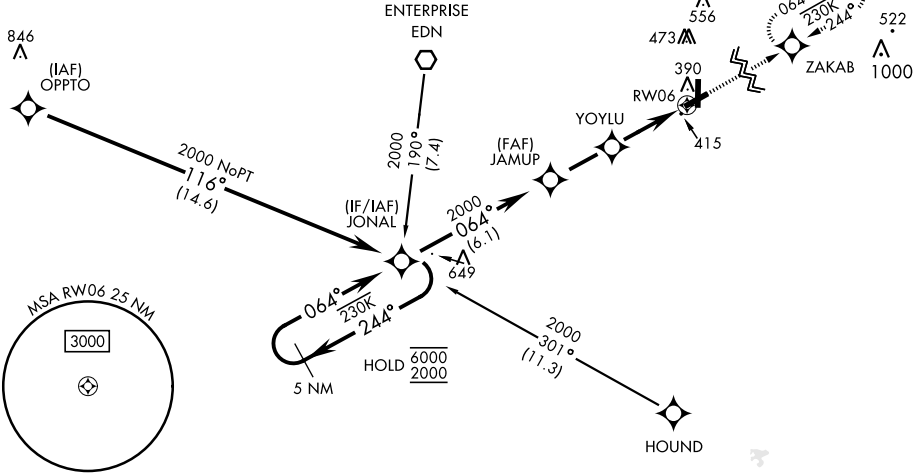
MISSED APPROACH: Climb to 2000 direct ZAKAB and hold.

- * When ALS inop, increase RVR to 40, vis to 3/4 mile.
- ** When ALS inop, increase RVR to 45, vis to 7/8 mile.
- *** When ALS inop, increase CAT AB RVR to 55, vis to 1 mile; CAT CD RVR to 60, vis to 1 1/2 miles.

ATIS 111.2 316.15	APP CON * 021°-120° 125.4 327.125 121°-219° 133.75 270.35 220°-340° 133.45 239.275 341°-020° 121.1 319.25	TOWER * 135.2 (CTAF) 248.55	GND CON * 121.9 288.25	CLNC DEL * 118.075 380.1
---------------------------------------	---	---	--	--

For uncompensated Baro-VNAV systems, LNAV/VNAV NA below -1° C or above 54° C.

Procedure not authorized for arrivals at HOUND on V241 NE bound.

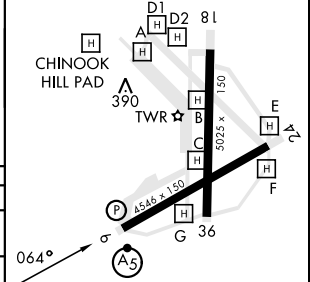
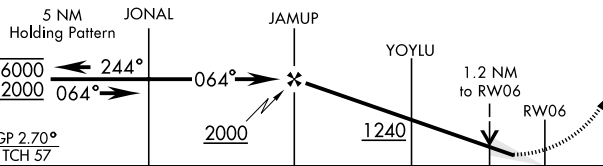


SE-4, 26 DEC 2024 to 23 JAN 2025

SE-4, 26 DEC 2024 to 23 JAN 2025

2000 ZAKAB

ELEV	301	TDZE	298
------	-----	------	-----



CATEGORY	A	B	C	D
LPV DA*	498/24		200	(200-1/2)
LNAV/VNAV DA**	585/24		287	(300-1/2)
LNAV MDA***	680/24	382 (400-1/2)	680/35	382 (400-5/8)
CIRCLING	780-1 479 (500-1)	820-1 519 (600-1)	900-1 1/2 599 (600-1 1/2)	900-2 599 (600-2)

HIRL Rwy 6-24
MIRL Rwy 18-36

FORT NOVOSHEL, ALABAMA

31° 17' N-85° 43' W

CAIRNS AAF (KOZR)

Amdt 3 26DEC24

RNAV (GPS) RWY 6