

FORT NOVOSHEL, ALABAMA

VOR RWY 24

CAIRNS AAF (KOZR)

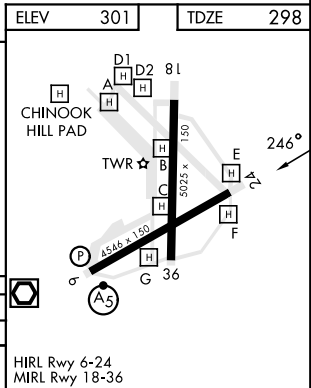
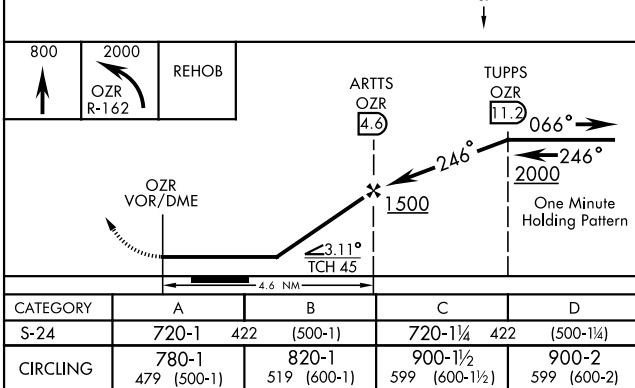
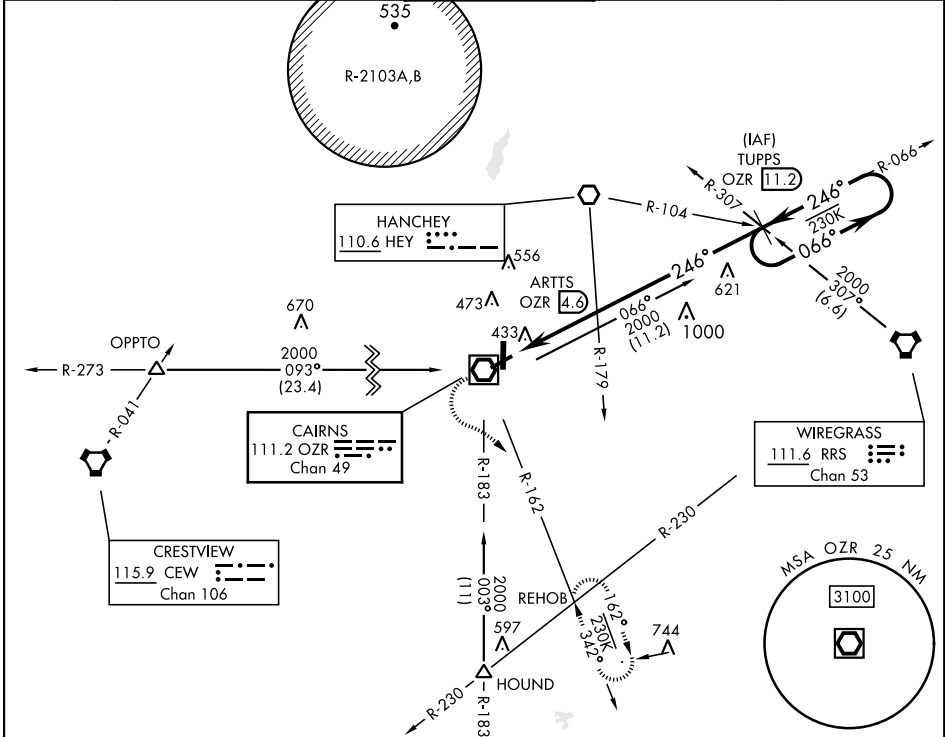
| | | |
|---|-------------------------|--|
| VOR/DME OZR 111.2 Chan 49 | APCH CRS 246° | Rwy Idg TDZE Arprt Elev 4546 298 301 |
|---|-------------------------|--|

[USA]

Procedure NA at night.
Visibility reduction by helicopters NA.

MISSED APPROACH: Climb to 800 then climbing left turn to 2000 via OZR
VOR/DME R-162 to REHOB INT and hold; or when directed by ATC, climb to
800 then climbing right turn heading 290° to 2000 within 10 NM (RADAR required).

| | | | | |
|---------------------------------------|---|---|--|--|
| ATIS 111.2 316.15 | APP CON ★ 021°-120° 125.4 327.125 121°-219° 133.75 270.35 220°-340° 133.45 239.275 341°-020° 121.1 319.25 | TOWER ★ 135.2 (CTAF) 248.55 | GND CON ★ 121.9 288.25 | CLNC DEL ★ 118.075 380.1 |
|---------------------------------------|---|---|--|--|



FORT NOVOSHEL, ALABAMA

31° 17' N-85° 43' W

CAIRNS AAF (KOZR)

Amdt 13 13JUL23

VOR RWY 24

SE-4, 26 DEC 2024 to 23 JAN 2025

SE-4, 26 DEC 2024 to 23 JAN 2025