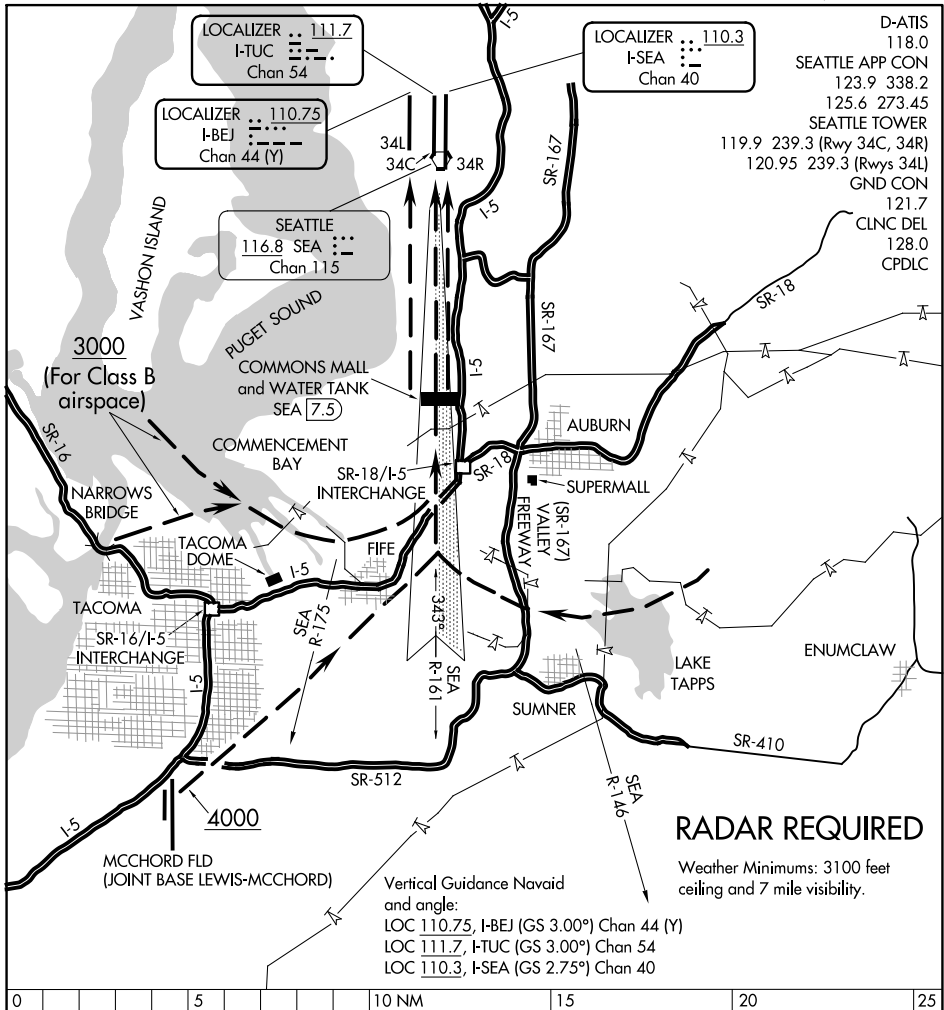


# MALL VISUAL RWY 34R/C/L

SEATTLE-TACOMA INTL (SEA)  
SEATTLE, WASHINGTON

AL-582 (FAA)



NW-1, 26 DEC 2024 to 23 JAN 2025

NW-1, 26 DEC 2024 to 23 JAN 2025

D-ATIS 118.0  
 SEATTLE APP CON 123.9 338.2  
 125.6 273.45  
 SEATTLE TOWER 119.9 239.3 (Rwys 34C, 34R)  
 120.95 239.3 (Rwys 34L)  
 GND CON 121.7  
 CLNC DEL 128.0  
 CPDLC

LOCALIZER .. 111.7  
 I-TUC : : : :  
 Chan 54

LOCALIZER .. 110.3  
 I-SEA : : : :  
 Chan 40

LOCALIZER .. 110.75  
 I-BEJ : : : :  
 Chan 44 (Y)

SEATTLE  
 116.8 SEA : : : :  
 Chan 115

## RADAR REQUIRED

Weather Minimums: 3100 feet ceiling and 7 mile visibility.

Vertical Guidance Navaid and angle:  
 LOC 110.75, I-BEJ (GS 3.00°) Chan 44 (Y)  
 LOC 111.7, I-TUC (GS 3.00°) Chan 54  
 LOC 110.3, I-SEA (GS 2.75°) Chan 40



## MALL VISUAL APPROACH RWY 34R/C/L

When the ceiling is at least 3100' and visibility is at least 7 miles, aircraft may be vectored towards Commencement Bay or McChord Fld or Lake Tapps for a Mall Visual Runway 34R/C/L Approach. When cleared for this approach; proceed inbound visually using the depicted landmarks to the centerline of runway 34R/C/L. Turn final before or over the interchange of State Road 18 (SR-18) and Interstate 5. Be established on the localizer or runway centerline at the Commons Mall and Water Tank (7.5 DME) and proceed visually to runway 34R/C/L.

# MALL VISUAL RWY 34R/C/L

47°27'N-122°19'W

SEATTLE, WASHINGTON  
SEATTLE-TACOMA INTL (SEA)