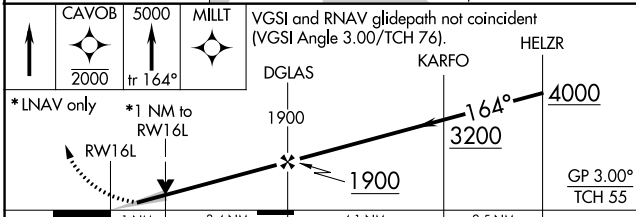
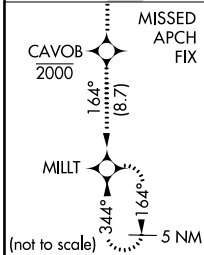
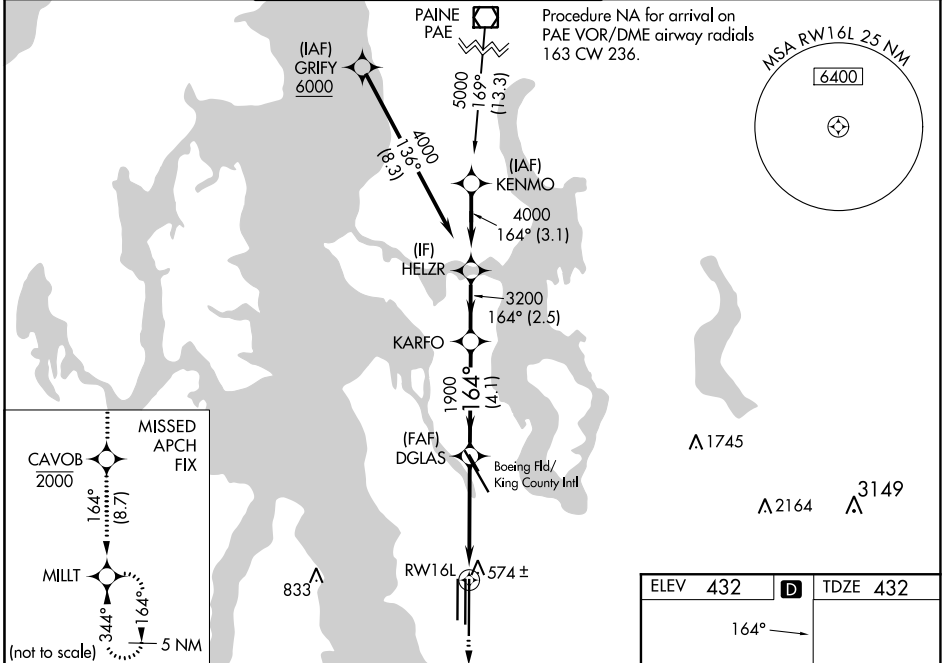


WAAS CH <b>63202</b> W16A	APP CRS <b>164°</b>	Rwy Idg <b>11901</b> TDZE <b>432</b> Apt Elev <b>432</b>
---------------------------------	------------------------	--

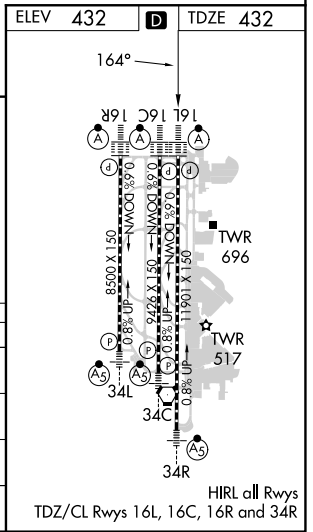
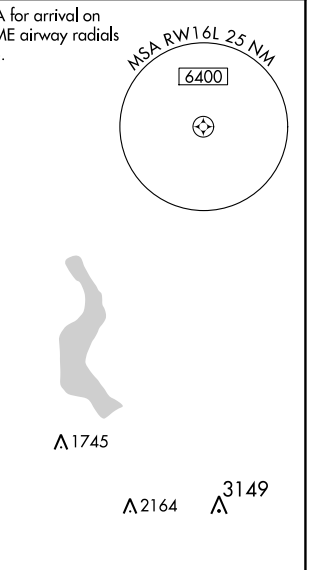
# RNAV (GPS) Y RWY 16L

SEATTLE-TACOMA INTL (SEA)

RNP APCH.		MISSED APPROACH: Climb direct CAVOB to cross CAVOB at or below 2000 then climb to 5000 on track 164° to MILLT and hold, continue climb-in-hold to 5000.	ALSF-2 		
▼ For uncompensated Baro-VNAV systems, LNAV/VNAV NA below -6°C (22°F) or above 54°C (130°F). Simultaneous approach authorized with Rwy 16R. Use of FD or AP providing RNAV track guidance required during simultaneous operations. LNAV procedure NA during simultaneous operations. For inop ALS, increase LPV all Cats visibility to RVR 4500, and increase LNAV Cats C/D visibility to RVR 6000.					
D-ATIS <b>118.0</b>	SEATTLE APP CON <b>133.65 273.45</b>	SEATTLE TOWER <b>119.9 239.3</b> (Rwys 16L, 16C, 34C, 34R) <b>120.95 239.3</b> (Rwys 16R, 34L)	GND CON <b>121.7</b>	CLNC DEL <b>128.0</b>	CPDLC



CATEGORY	A	B	C	D
LPV DA		700/24	268 (300-½)	
LNAV/VNAV DA		766/32	334 (400-⅙)	
LNAV MDA	840/24	408 (500-½)	840/40	408 (500-¾)
CIRCLING	1000-1	568 (600-1)	1000-1½ 568 (600-1½)	1000-2 568 (600-2)



NW-1, 26 DEC 2024 to 23 JAN 2025

NW-1, 26 DEC 2024 to 23 JAN 2025