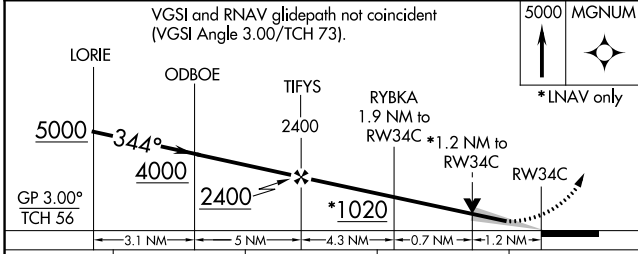
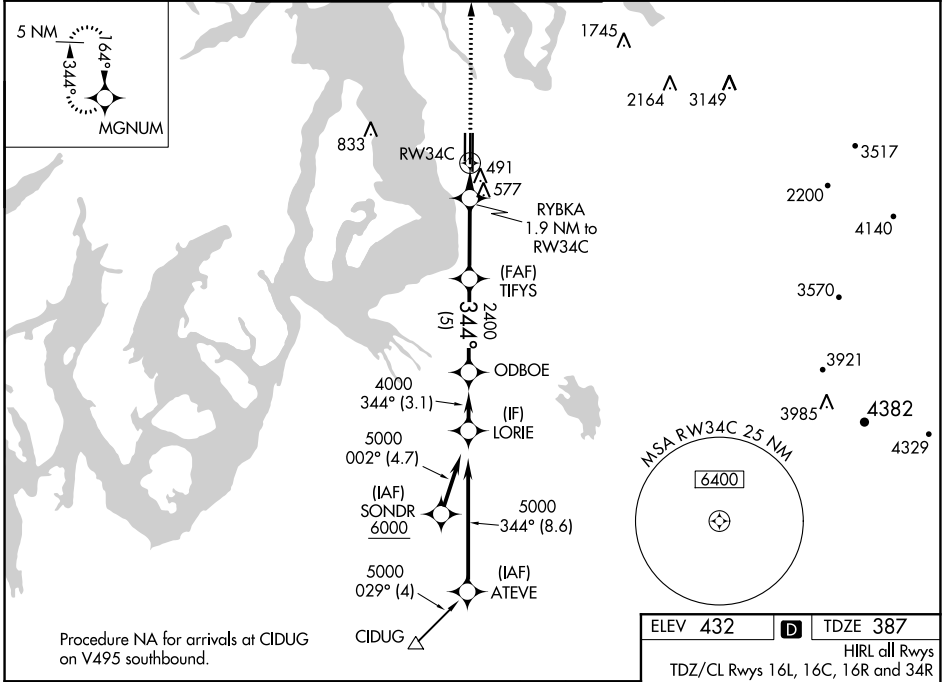


WAAS CH <b>77710</b> <b>W34B</b>	APP CRS <b>344°</b>	Rwy Idg TDZE <b>387</b> Apt Elev <b>432</b>
--	------------------------	---

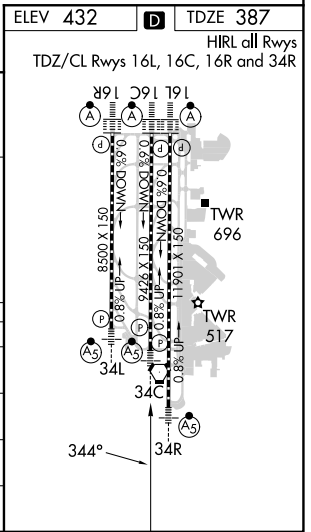
# RNAV (GPS) Y RWY 34C

SEATTLE-TACOMA INTL (SEA)

<b>RNP APCH.</b> Simultaneous approach authorized with Rwy 34L. LNAV procedure NA during simultaneous operations. Use of FD or AP providing RNAV track guidance required during simultaneous operations. For uncompensated Baro-VNAV systems, LNAV/VNAV NA below -6°C (22°F) or above 54°C (130°F).		<b>MALSR</b> 	<b>MISSED APPROACH:</b> Climb to 5000 direct MGNUM and hold, continue climb-in-hold to 5000.		
<b>D-ATIS</b> <b>118.0</b>	<b>SEATTLE APP CON</b> <b>133.65 273.45</b>	<b>SEATTLE TOWER</b> <b>119.9 239.3</b> (Rwys 16L, 16C, 34C, 34R) <b>120.95 239.3</b> (Rwys 16R, 34L)	<b>GND CON</b> <b>121.7</b>	<b>CLNC DEL</b> <b>128.0</b>	<b>CPDLC</b>



CATEGORY	A	B	C	D
LPV DA		610/24	223 (200-½)	
LNAV/VNAV DA		839/50	452 (500-1)	
LNAV MDA	880/24	493 (500-½)	880/55	493 (500-1)
CIRCLING	1000-1	568 (600-1)	1000-1½ 568 (600-1½)	1000-2 568 (600-2)



NW-1, 26 DEC 2024 to 23 JAN 2025

NW-1, 26 DEC 2024 to 23 JAN 2025