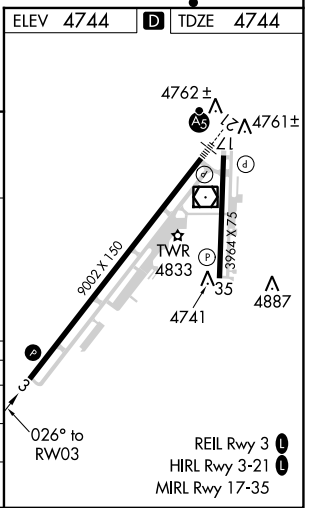
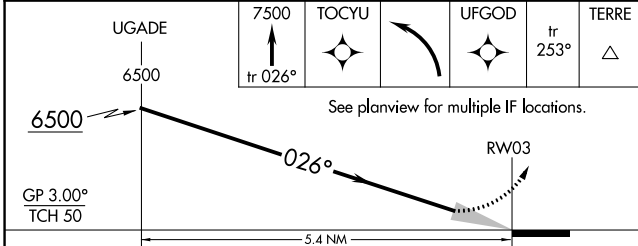
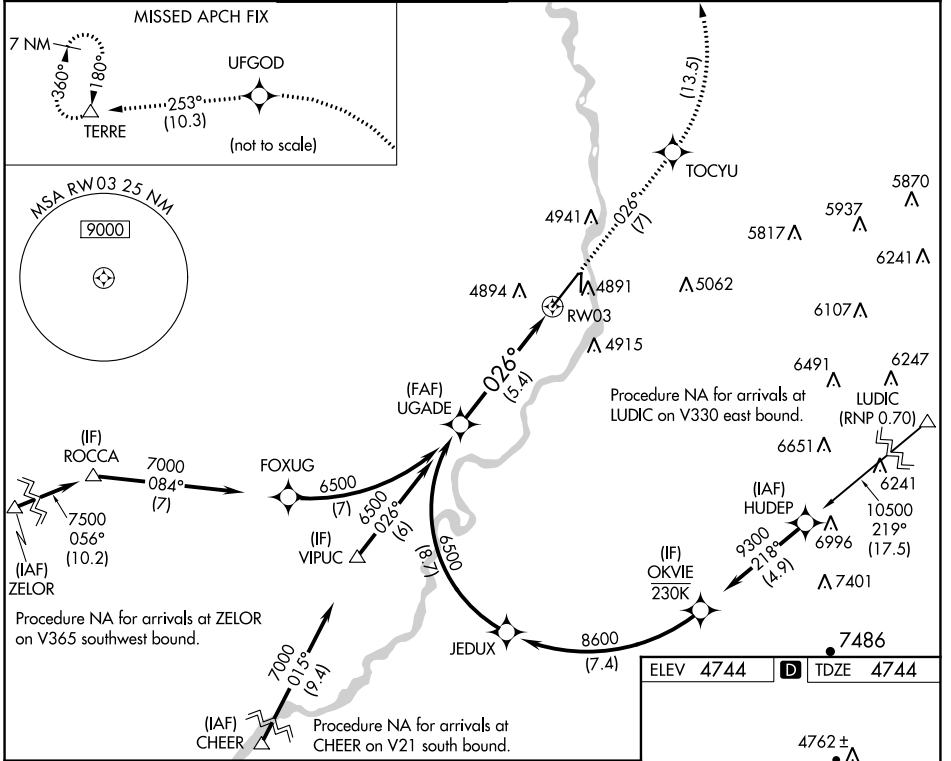


APP CRS	Rwy Idg	<b>9002</b>
<b>026°</b>	TDZE	<b>4744</b>
	Apt Elev	<b>4744</b>

# RNAV (RNP) Z RWY 3

IDAHO FALLS RGNL (IDA)

RNP AR APCH-GPS.			MISSED APPROACH: Climb to 7500 on track 026° to TOCYU, left turn to UFGOD, and on track 253° to TERRE and hold.			
For uncompensated Baro-VNAV systems, procedure NA below -27°C or above 54°C.			GND CON	CLNC DEL	GCO	UNICOM
ATIS	SALT LAKE CENTER	IDAHO FALLS TOWER *	121.7	121.7	121.725	122.95
<b>135.325</b>	<b>128.35 239.25</b>	<b>118.5 (CTAF) 0 257.8</b>				



CATEGORY	A	B	C	D
RNP 0.11 DA	5050-7/8 306 (400-7/8)			
RNP 0.30 DA	5146-1 1/8 402 (500-1 1/8)			

**AUTHORIZATION REQUIRED**

NW-1, 26 DEC 2024 to 23 JAN 2025

NW-1, 26 DEC 2024 to 23 JAN 2025