

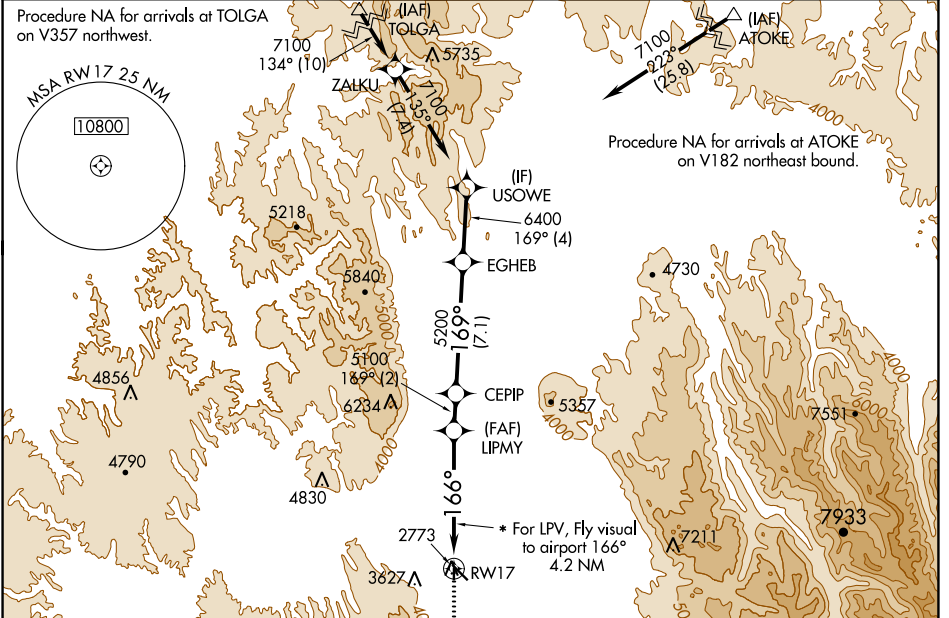
WAAS CH 66000 W17A	APP CRS 166°	Rwy Idg TDZE Apt Elev	3400 2714 2718
--	------------------------	-----------------------------	---

RNAV (GPS) RWY 17

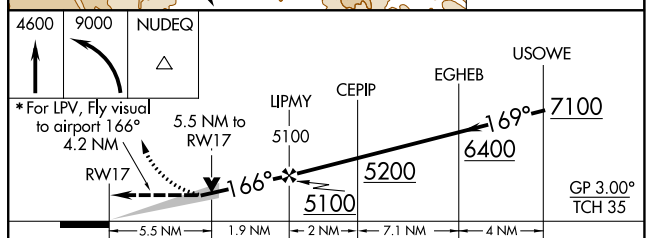
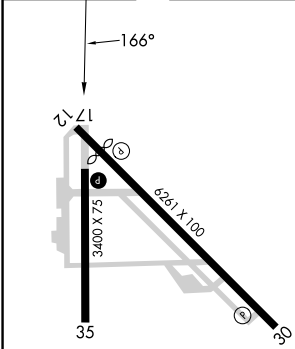
LA GRANDE/UNION COUNTY (L.G.D)

RNP APCH - GPS.		MISSED APPROACH: Climb to 4600 then climbing left turn to 9000 direct NUDEQ and hold, continue climb-in-hold to 9000.
<p>▼ Circling NA for Cats C and D southwest of Rwy 12-30.</p> <p>▲ NA Fly visual to airport authorized during day only.</p> <p>☁ -17°C * Day visibility minimums 3 SM.</p>		

AWOS-3PT 135.075	SEATTLE CENTER 132.6 269.35	UNICOM 122.8 (CTAF) 0
----------------------------	---------------------------------------	---------------------------------



ELEV 2718	D	TDZE 2714
-----------	----------	-----------



CATEGORY	A	B	C	D
LPV DA*	4112-5 1398 (1400-5)			
LNAV MDA	4540-1¼ 1826 (1900-1¼)	4540-1½ 1826 (1900-1½)	4540-3 1826 (1900-3)	
C CIRCLING	4540-1¼ 1822 (1900-1¼)	4540-1½ 1822 (1900-1½)	4540-3 1822 (1900-3)	

REIL Rwy 30
REIL Rwy 17 and 35
MIRL Rwy 12-30 and 17-35

NW-1, 26 DEC 2024 to 23 JAN 2025

NW-1, 26 DEC 2024 to 23 JAN 2025