

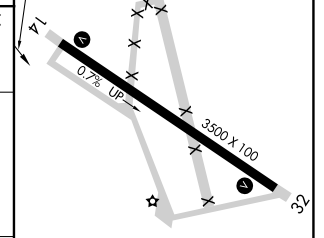
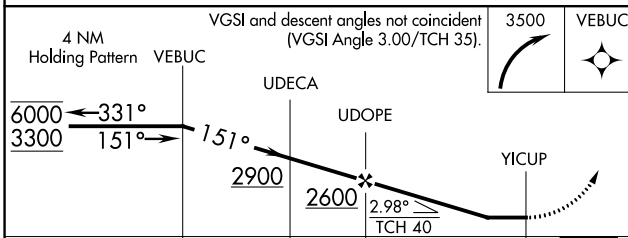
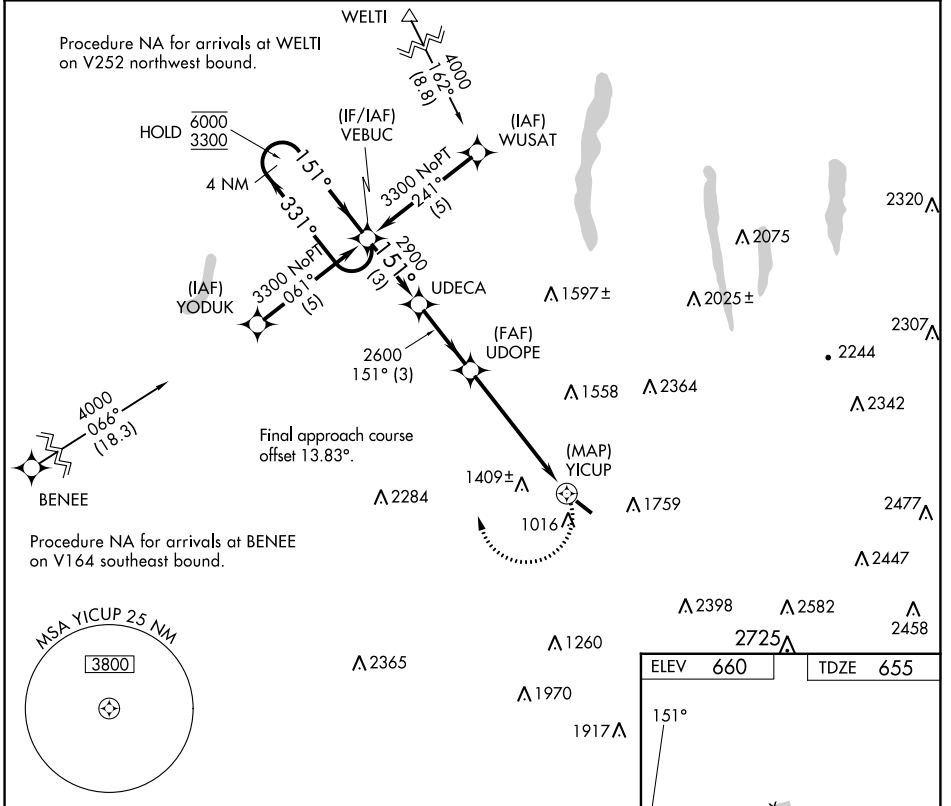
APP CRS	Rwy ldg	<b>3500</b>
<b>151°</b>	TDZE	<b>655</b>
	Apt Elev	<b>660</b>

# RNAV (GPS) RWY 14

DANSVILLE MUNI (DSV)

RNP APCH.	MISSED APPROACH: Climbing right turn to 3500 direct VEBUC and hold.
<p>▼ Procedure NA at night. Rwy 14 helicopter visibility reduction below 1 SM NA.</p> <p>▲</p>	

ASOS <b>118.325</b>	ROCHESTER APP CON <b>123.7 322.3</b>	UNICOM <b>123.0 (CTAF) 0</b>
------------------------	-----------------------------------------	---------------------------------



CATEGORY	A	B	C	D
RNAV MDA	1840-1¼ 1185 (1200-1¼)	1840-1½ 1185 (1200-1½)	1840-3 1185 (1200-3)	NA
CIRCLING	1940-1¼ 1280 (1300-1¼)	2120-1½ 1460 (1500-1½)	2220-3 1560 (1600-3)	NA

ELEV	660	TDZE	655
------	-----	------	-----

MIRL Rwy 14-32 0

NE-2, 26 DEC 2024 to 23 JAN 2025

NE-2, 26 DEC 2024 to 23 JAN 2025