

APP CRS	Rwy Idg	N/A
343°	TDZE	N/A
	Apt Elev	660

RNAV (GPS)-A

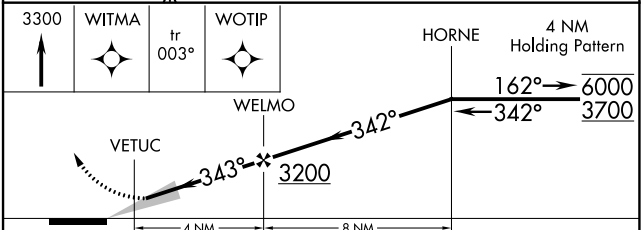
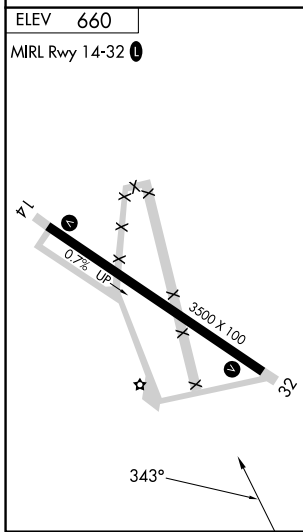
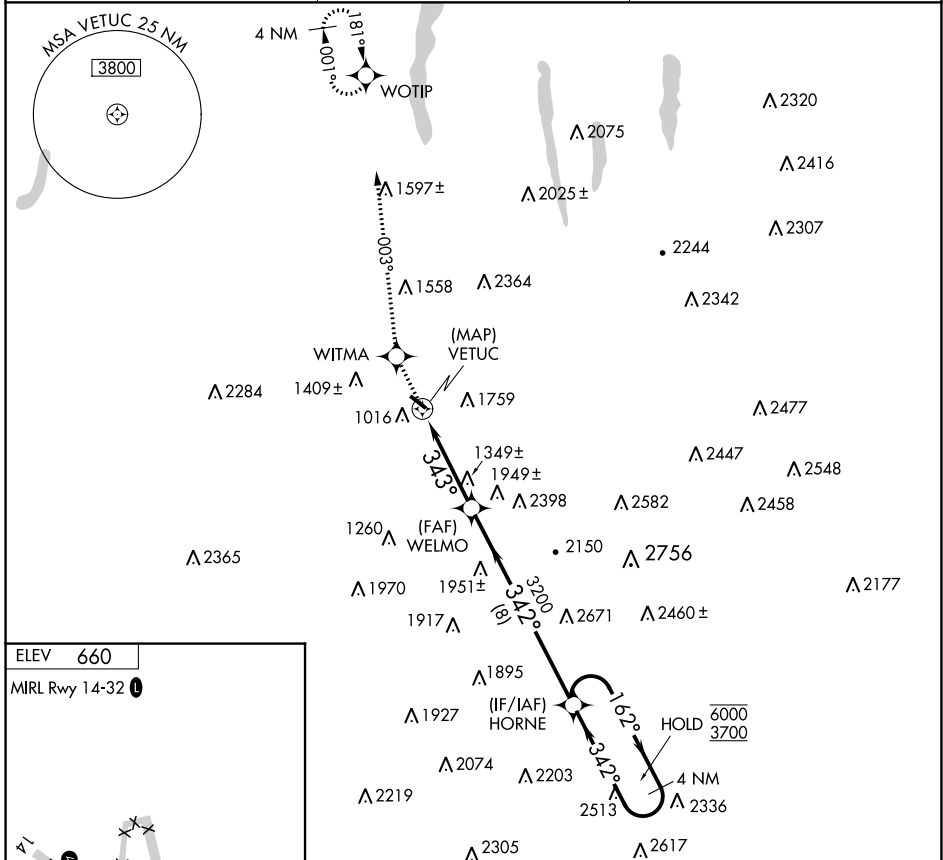
DANVILLE MUNI (DSV)

RNP APCH - GPS.

Procedure NA at night. Rwy 14, 32 helicopter visibility reduction below 1 SM NA. When local altimeter setting not received, use ROC altimeter setting and increase all MDAs 100 feet.

MISSED APPROACH: Climb to 3300 direct WITMA and on 003° track to WOTIP and hold.

ASOS 118.325	ROCHESTER APP CON 123.7 322.3	UNICOM 123.0 (CTAF)
------------------------	---	-------------------------------



CATEGORY	A	B	C	D
CIRCLING	1960-1¼ 1300 (1300-1¼)	2120-1½ 1460 (1500-1½)	2220-3 1560 (1600-3)	NA

NE-2, 26 DEC 2024 to 23 JAN 2025

NE-2, 26 DEC 2024 to 23 JAN 2025