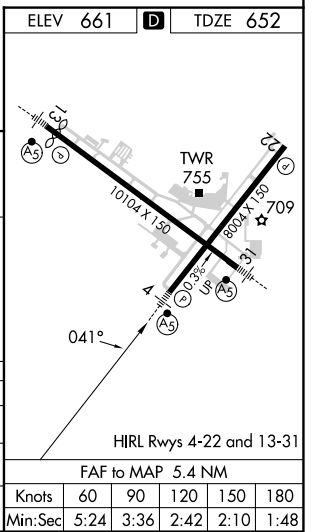
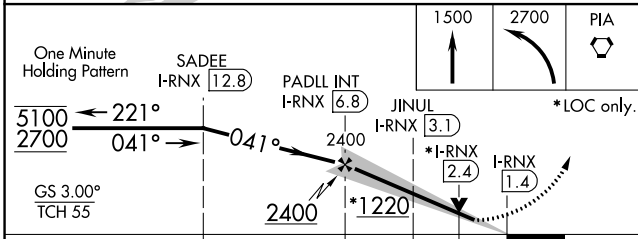
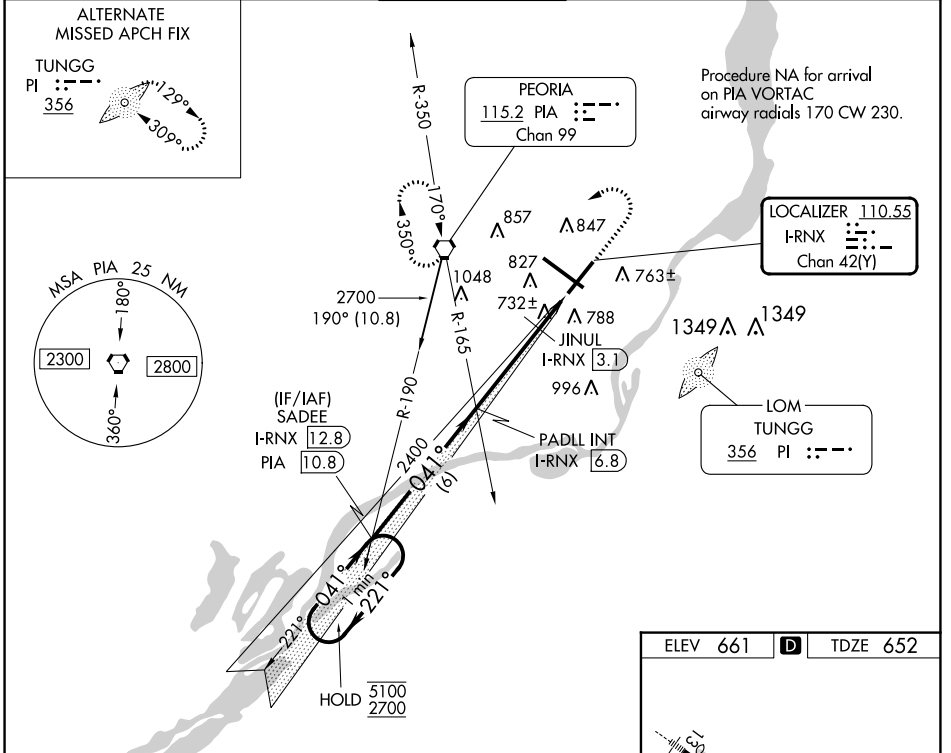


LOC/DME I-RNX <b>110.55</b> Chan <b>42 (Y)</b>	APP CRS <b>041°</b>	Rwy Idg <b>7826</b> TDZE <b>652</b> Apt Elev <b>661</b>
--	------------------------	---

**ILS or LOC RWY 4**  
GENERAL DOWNING - PEORIA INTL (PIA)

DME required.	MALSR 	MISSED APPROACH: Climb to 1500 then climbing left turn to 2700 direct PIA VORTAC and hold, continue climb-in-hold to 2700.
Circling Rwy 13, 31 NA at night. For inop ALS, increase S-LOC 4 Cats C and D visibility to RVR 5500. **RVR 1800 authorized with use of FD or AP or HUD to DA.		

ATIS <b>126.1 282.2</b>	SAINT LOUIS APP CON <b>125.8 269.2</b>	PEORIA TOWER <b>124.0 353.85</b>	GND CON <b>121.85 348.6</b>	CLNC DEL <b>124.675 317.55</b>
----------------------------	---	-------------------------------------	--------------------------------	-----------------------------------



CATEGORY	A	B	C	D
S-ILS 4**	852/24		200 (200-½)	
S-LOC 4	1000/24	348 (400-½)	1000/30	348 (400-¾)
CIRCLING	1160-1	499 (500-1)	1180-1½ 519 (600-1½)	1400-2¼ 739 (800-2¼)

EC-3, 26 DEC 2024 to 23 JAN 2025

EC-3, 26 DEC 2024 to 23 JAN 2025