

| | | | |
|--|------------------------|---|-------------|
| WAAS CH 60922 W13A | APP CRS 128° | Rwy Idg TDZE 632 Apt Elev 661 | 9604 |
|--|------------------------|---|-------------|

RNAV (GPS) RWY 13

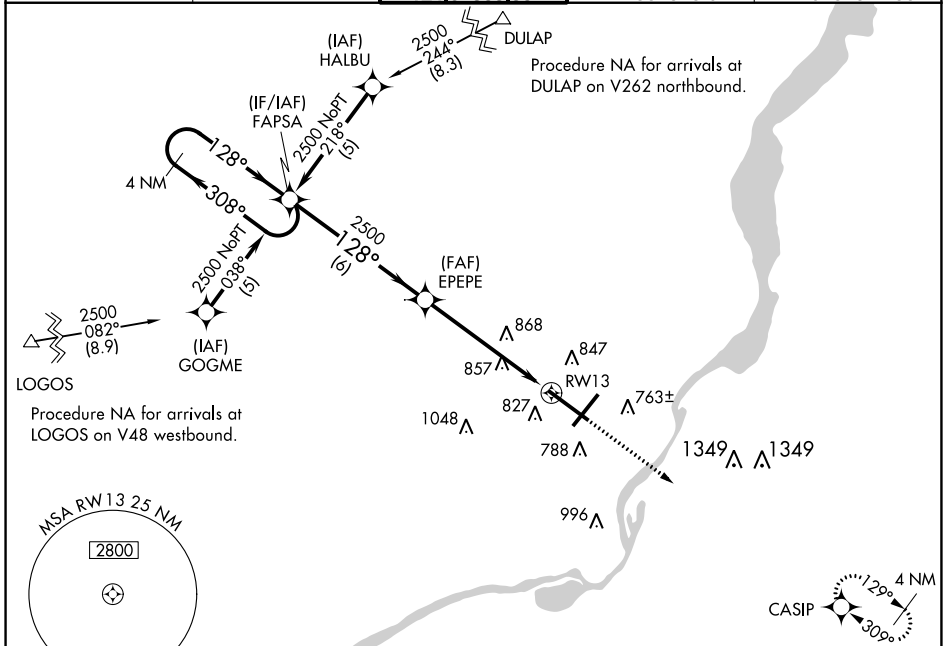
GENERAL DOWNING - PEORIA INTL (PIA)

RNP APCH - GPS.

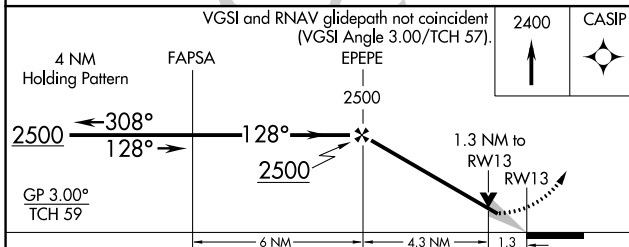
For uncompensated Baro-VNAV systems, LNAV/VNAV NA below -19°C or above 54°C. When local altimeter setting not received, use Lincoln altimeter setting increase LPV DA to 1110 feet and all visibilities ¼ SM. Increase LNAV/VNAV DA to 1168 feet and all visibilities ½ SM. Increase all MDAs 100 feet and LNAV visibility Cat C/D ¼ SM, and Circling visibility Cat C/D ½ SM. Baro-VNAV and VDP NA when using Lincoln altimeter setting. For inop ALS, increase LPV all Cats visibility to 1 ½ SM, LNAV Cat A/B visibility to 1 SM and Cat C/D visibility to 1 ½ SM. For inop ALS when using Lincoln altimeter setting, increase LPV visibility all Cats to 1 ½ SM and LNAV Cat A/B visibility to 1 SM.

MALSR MISSED APPROACH: Climb to 2400 direct CASIP and hold.

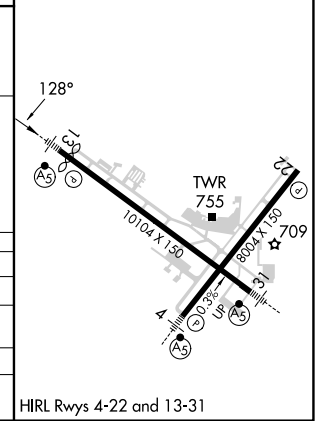
| | | | | |
|----------------------------|---|-------------------------------------|--------------------------------|-----------------------------------|
| ATIS 126.1 282.2 | SAINT LOUIS APP CON 125.8 269.2 | PEORIA TOWER 124.0 353.85 | GND CON 121.85 348.6 | CLNC DEL 124.675 317.55 |
|----------------------------|---|-------------------------------------|--------------------------------|-----------------------------------|



| | |
|----------|----------|
| ELEV 661 | TDZE 632 |
|----------|----------|



| CATEGORY | A | B | C | D |
|--------------|--------|-------------|-------------------------|-------------------------|
| LPV DA | | 1025-¾ | 389 (400-¾) | |
| LNAV/VNAV DA | | 1083-1 | 447 (500-1) | |
| LNAV MDA | 1120-½ | 484 (500-½) | 1120-1 | 484 (500-1) |
| CIRCLING | 1160-1 | 499 (500-1) | 1180-1½ 519 (600-1½) | 1400-2¼ 739 (800-2¼) |



EC-3, 26 DEC 2024 to 23 JAN 2025

EC-3, 26 DEC 2024 to 23 JAN 2025