

APP CRS	Rwy Idg	8004
221°	TDZE	661
	Apt Elev	661

RNAV (GPS) RWY 22

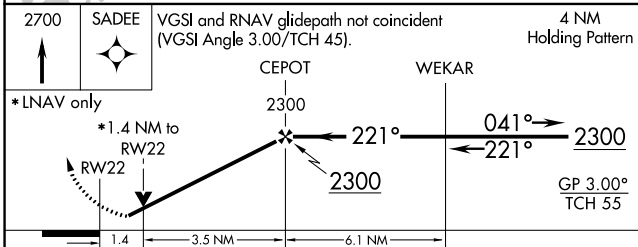
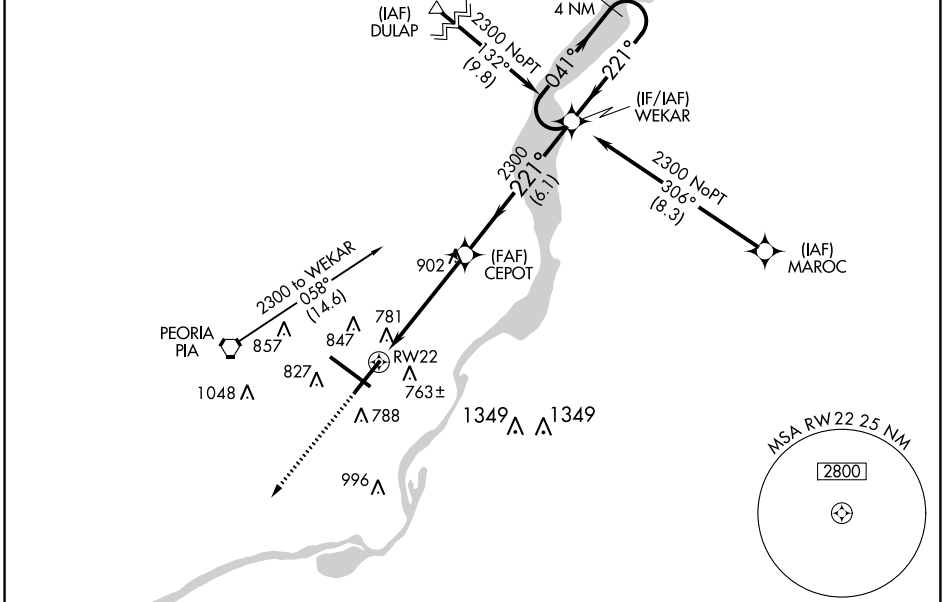
GENERAL DOWNING - PEORIA INTL (PIA)

RNP APCH

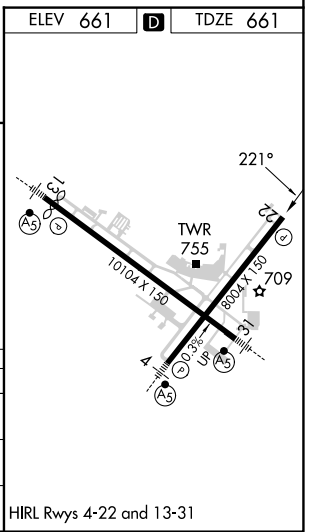
⚠ For uncompensated Baro-VNAV systems, LNAV/VNAV NA below -19°C or above 54°C. When local altimeter setting not received, use Logan County altimeter setting and increase all DA 89 feet and all MDA 100 feet, increase LNAV/VNAV DA all Cats visibility to 1½ mile, LNAV MDA Cat C and D visibility to ¾ mile, and Circling Cat C ½ mile and Cat D ½ mile. Baro-VNAV and VDP NA when using Logan County altimeter setting. Rwy 22 helicopter visibility reduction below ¾ SM NA. Circling Rwy 13, 31 NA at night.

MISSED APPROACH: Climb to 2700 direct SADEE and hold.

ATIS	SAINT LOUIS APP CON	PEORIA TOWER	GND CON	CLNC DEL
126.1 282.2	125.8 269.2	124.0 353.85	121.85 348.6	124.675 317.55



CATEGORY	A	B	C	D
LNAV/VNAV DA	1093-1 ³ / ₈ 432 (500-1 ³ / ₈)			
LNAV MDA	1160-1	499 (500-1)	1160-1 ³ / ₈	499 (500-1 ³ / ₈)
C CIRCLING	1160-1	499 (500-1)	1180-1 ¹ / ₂ 519 (600-1 ¹ / ₂)	1400-2 ¹ / ₄ 739 (800-2 ¹ / ₄)



EC-3, 26 DEC 2024 to 23 JAN 2025

EC-3, 26 DEC 2024 to 23 JAN 2025