

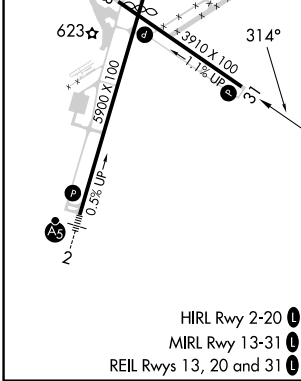
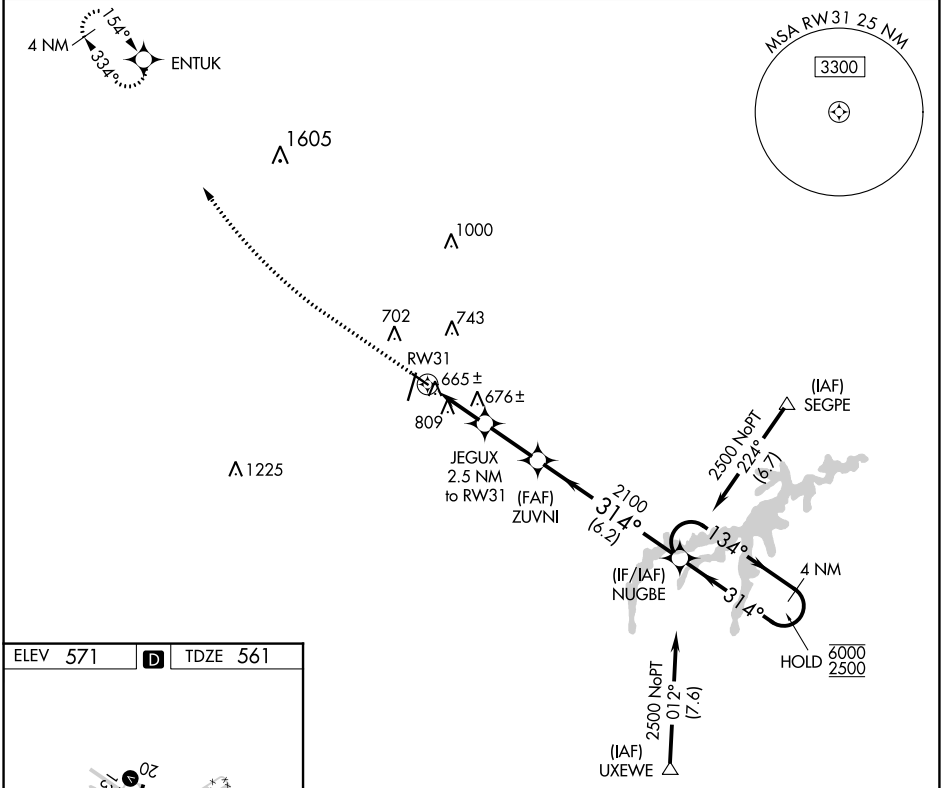
WAAS CH <b>93631</b> <b>W31A</b>	APP CRS <b>314°</b>	Rwy Idg TDZE <b>561</b> Aprt Elev <b>571</b>	<b>3910</b>
--	------------------------	--	-------------

# RNAV (GPS) RWY 31

DANVILLE RGNL (DAN)

RNP APCH.	MISSED APPROACH: Climb to 1000 then climbing right turn to 3300 direct ENTUK and hold.
Rwy 31 helicopter visibility reduction below 3/4 SM NA.	

ASOS <b>128.125</b>	WASHINGTON CENTER <b>124.05 352.0</b>	UNICOM <b>123.05 (CTAF) 0</b>
------------------------	--	----------------------------------



1000	3300	ENTUK	Visual Segment - Obstacles.	4 NM Holding Pattern
			ZUVNI	NUGBE
			JEGUX 2.5 NM to RW31	
			RW31	
			1360	2100
			2.5 NM	2.3 NM
			6.2 NM	
CATEGORY	A	B	C	D
LP MDA	920-1	359 (400-1)		NA
LNAV MDA	1060-1	499 (500-1)		NA

NE-3, 26 DEC 2024 to 23 JAN 2025

NE-3, 26 DEC 2024 to 23 JAN 2025