

NDB GTP 245	APP CRS 225°	Rwy Idg 5504
		TDZE 242
		Apt Elev 264

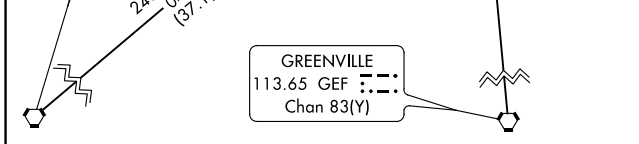
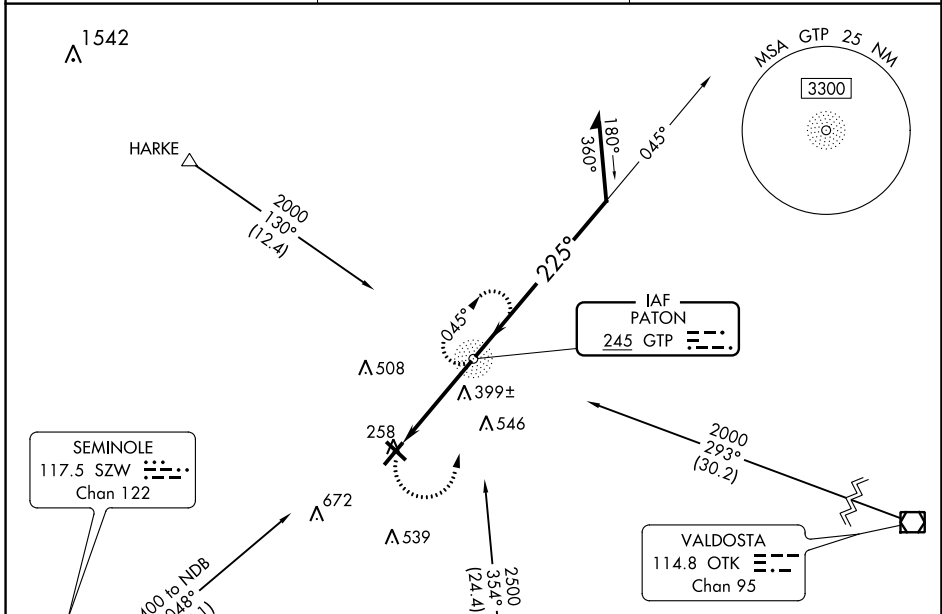
NDB RWY 22

THOMASVILLE RGNL (TVI)

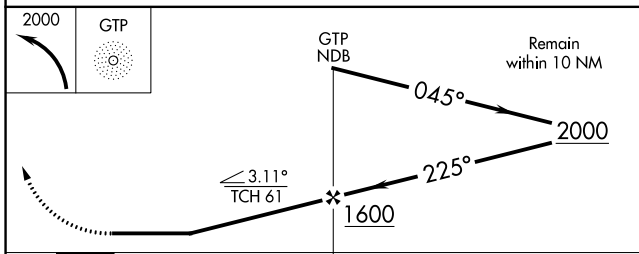
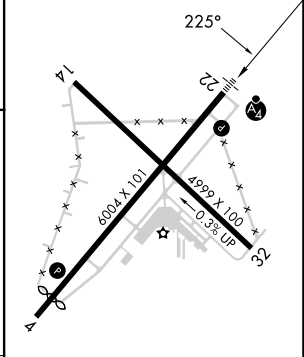
⚠ When local altimeter setting not received, use Valdosta altimeter setting and increase all MDA 100 feet, increase S-22 Cats C/D visibility $\frac{3}{8}$ SM and Circling Cats C/D visibility $\frac{1}{4}$ SM. For inop ALS, increase S-22 Cats C/D visibility to $1\frac{3}{8}$ SM. For inop ALS when using the Valdosta altimeter setting, increase S-22 Cat D visibility to $1\frac{1}{8}$ SM. Circling Rwy 4, 14, 32 NA at night.

MALSF MISSED APPROACH: Climbing left turn to 2000 direct GTP NDB and hold, continue climb-in-hold to 2000.

AWOS-3PT 119.175	VALDOSTA APP CON * 126.6 285.6	UNICOM 123.075 (CTAF)
----------------------------	--	---------------------------------



ELEV 264	D	TDZE 242
----------	----------	----------



CATEGORY	A	B	C	D
S-22	700- $\frac{3}{4}$ 458 (500- $\frac{3}{4}$)		700-1 458 (500-1)	
C CIRCLING	700-1 436 (500-1)	800-1 536 (600-1)	900-1 $\frac{3}{4}$ 636 (700-1 $\frac{3}{4}$)	1040-2 $\frac{1}{2}$ 776 (800-2 $\frac{1}{2}$)

LIRL Rwy 14-32

HIRL Rwy 4-22

FAF to MAP 4 NM

Knots	60	90	120	150	180
Min:Sec	4:00	2:40	2:00	1:36	1:20

SE-4, 26 DEC 2024 to 23 JAN 2025

SE-4, 26 DEC 2024 to 23 JAN 2025