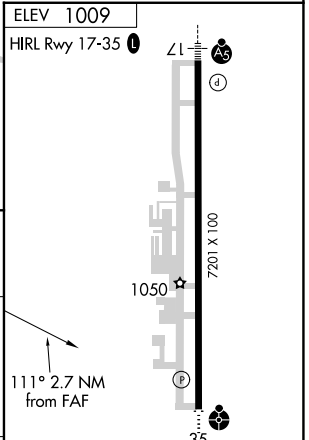
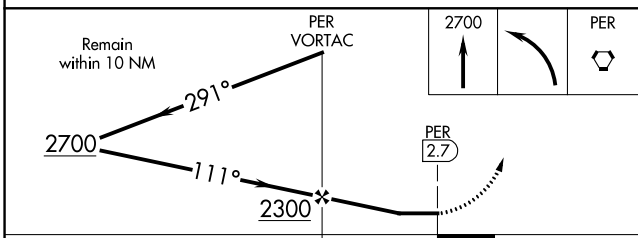
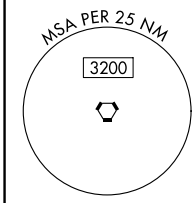
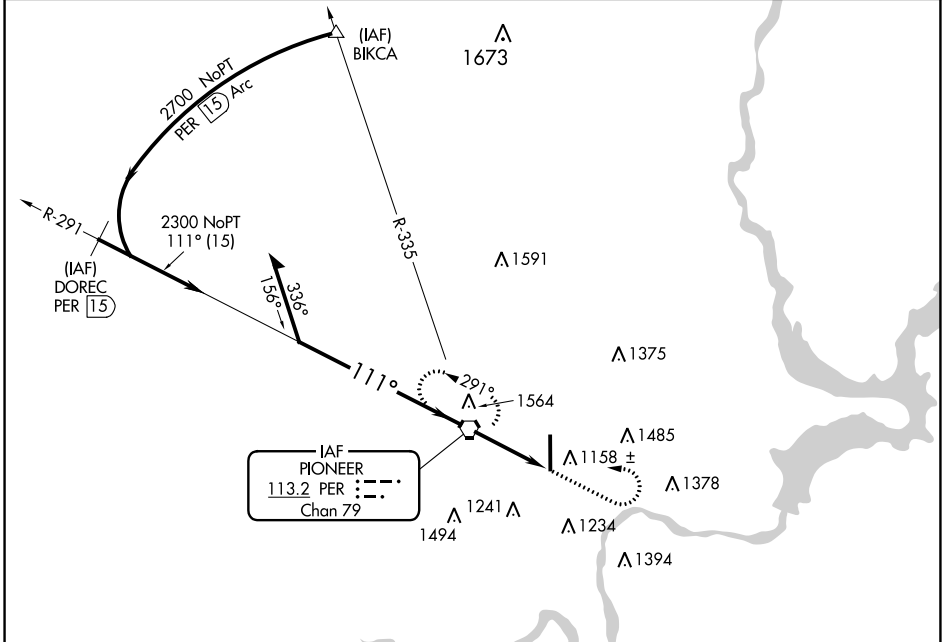


VORTAC PER 113.2 Chan 79	APP CRS 111°	Rwy Idg TDZE Apt Elev 1009	N/A N/A
--	------------------------	--	--------------------------

VOR-A
PONCA CITY RGNL (PNC)

⚠ MISSED APPROACH: Climb to 2700 then left turn direct PER VORTAC and hold.

ASOS 134.075	KANSAS CITY CENTER 127.8 319.1	UNICOM 123.0 (CTAF) 0
------------------------	--	---------------------------------



CATEGORY	FAF to MAP 2.7 NM					
	A	B	C	D		
CIRCLING	1520-1 511 (600-1)	1580-1 571 (600-1)	1800-2¼ 791 (800-2¼)	1880-2¾ 871 (900-2¾)		
	Knots	60	90	120	150	180
	Min:Sec	2:42	1:48	1:21	1:05	0:54

SC-1, 26 DEC 2024 to 23 JAN 2025

SC-1, 26 DEC 2024 to 23 JAN 2025