

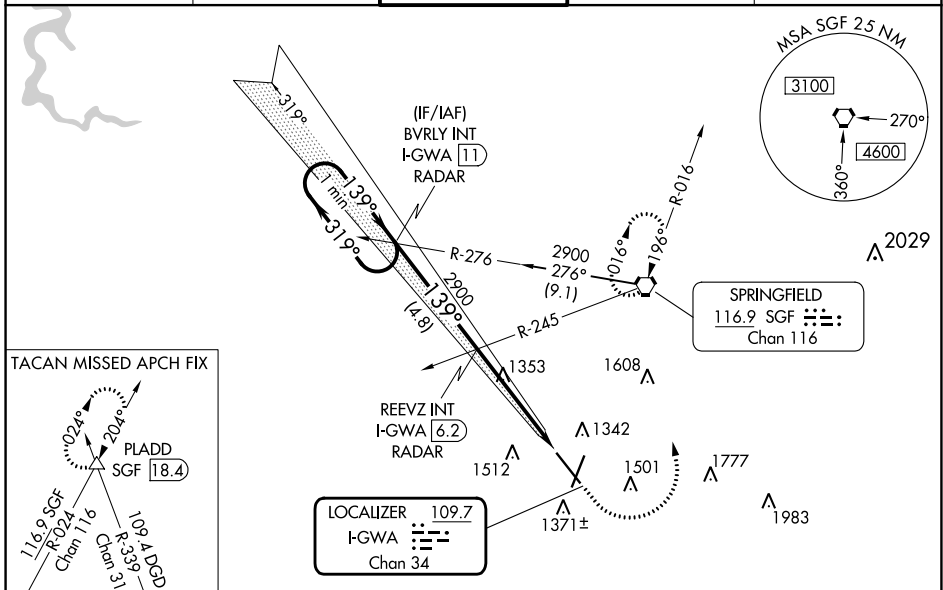
LOC/DME I-GWA 109.7 Chan 34	APP CRS 139°	Rwy Idg TDZE Apt Elev	8000 1260 1268
---	------------------------	-----------------------------	---

ILS or LOC RWY 14

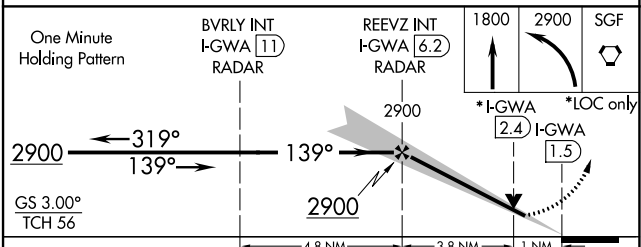
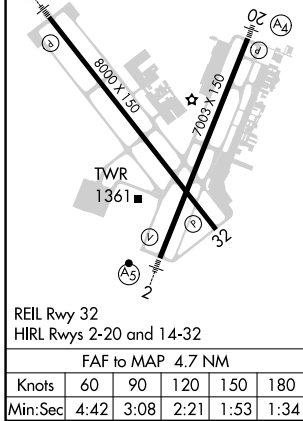
SPRINGFIELD-BRANSON NTL (SGF)

Helicopter visibility reduction below 3/4 SM NA. Inoperative table does not apply to S-ILS 14. For inoperative MALS/R, increase S-LOC 14 all Cats visibility to 1.	MALS/R 	MISSED APPROACH: Climb to 1800 then climbing left turn to 2900 to SGF VORTAC and hold. (TACAN aircraft continue on SGF VORTAC R-024 to PLADD INT and hold NE, RT, 204° inbound).
		(IF/IAF) BVRLY INT I-GWA [11] RADAR

ATIS 135.125	SPRINGFIELD APP CON 124.95 290.5	SPRINGFIELD TOWER 119.9 257.8	GND CON 121.9 251.15	CLNC DEL 123.675
------------------------	--	---	--------------------------------	----------------------------



ELEV 1268	D	TDZE 1260
-----------	----------	-----------



CATEGORY	A	B	C	D
S-ILS 14		1517-3/4 257 (300-3/4)		
S-LOC 14		1620-3/4 360 (400-3/4)		
C CIRCLING	1760-1 492 (500-1)	1820-1 552 (600-1)	1820-1 1/2 552 (600-1 1/2)	1920-2 652 (700-2)

NC-3, 26 DEC 2024 to 23 JAN 2025

NC-3, 26 DEC 2024 to 23 JAN 2025