

WAAS CH <b>65613</b> <b>W20A</b>	APP CRS <b>199°</b>	Rwy ldg TDZE Apt Elev	<b>7003</b> <b>1262</b> <b>1268</b>
--	------------------------	-----------------------------	---

# RNAV (GPS) RWY 20

SPRINGFIELD-BRANSON NTL (SGF)

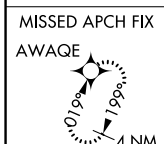
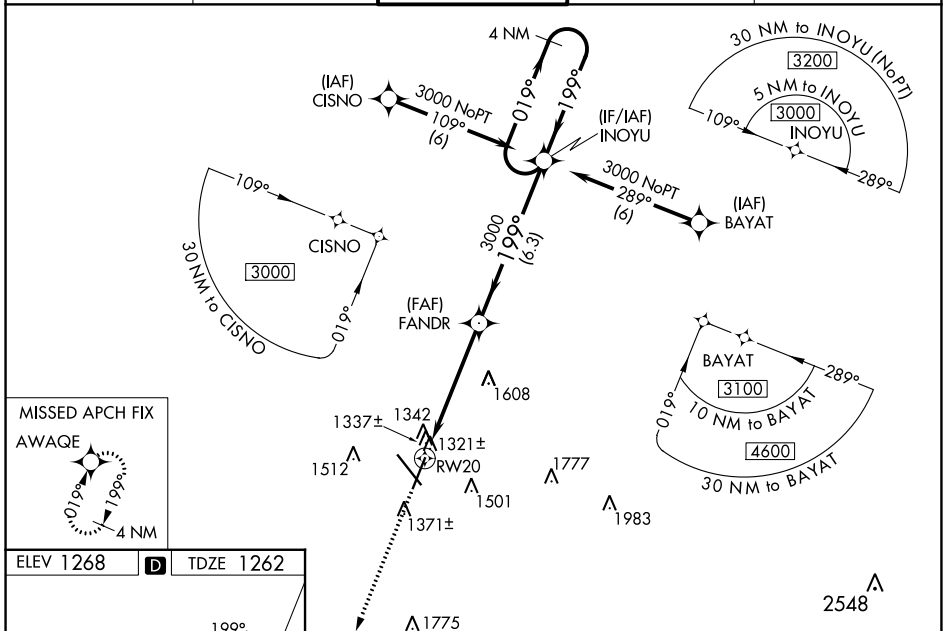
**⚠** DME/DME RNP-0.3 NA. Visibility reduction by helicopters NA.  
**⚠** For uncompensated Baro-VNAV systems, LNAV/VNAV NA below -17°C (2°F) or above 46°C (114°F).  
 Baro-VNAV and VDP NA when using Monett altimeter setting.  
 Inoperative table does not apply to LNAV/VNAV all Cats and LNAV Cat C.  
 When local altimeter setting not received, use Monett altimeter setting and increase all DAs 90 feet and increase all MDAs 100 feet, increase LPV visibility all Cats ¼ mile, increase LNAV/VNAV all Cats ¼ mile, increase LNAV Cats C and D ½ mile, increase Circling Cat C ¼ mile.

MAIS

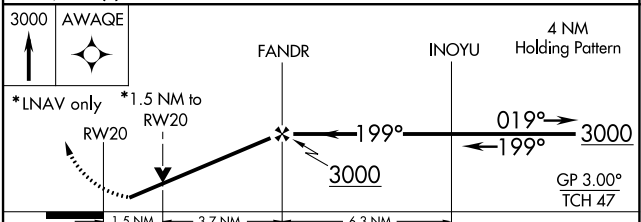
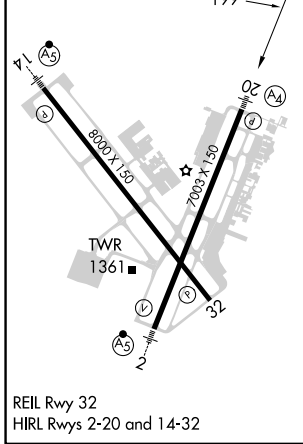


MISSED APPROACH: Climb to 3000 direct AWAQE and hold.

ATIS <b>135.125</b>	SPRINGFIELD APP CON <b>124.95 290.5</b>	SPRINGFIELD TOWER <b>119.9 257.8</b>	GND CON <b>121.9 251.15</b>	CLNC DEL <b>123.675</b>
------------------------	--	---	--------------------------------	----------------------------



ELEV 1268	<b>D</b>	TDZE 1262
-----------	----------	-----------



CATEGORY	A	B	C	D
LPV DA	1531-1 269 (300-1)			
LNAV/VNAV DA	1656-1½ 394 (400-1½)			
LNAV MDA	1780-¾ 518 (600-¾)	1780-1½ 518 (600-1½)	1780-1¾ 518 (600-1¾)	1780-1¾ 518 (600-1¾)
<b>C</b> CIRCLING	1780-1 512 (600-1)	1820-1 552 (600-1)	1820-1½ 552 (600-1½)	1920-2 652 (700-2)

NC-3, 26 DEC 2024 to 23 JAN 2025

NC-3, 26 DEC 2024 to 23 JAN 2025