

WAAS CH <b>72933</b> <b>W32A</b>	APP CRS <b>319°</b>	Rwy Idg TDZE Apt Elev	<b>8000</b> <b>1268</b> <b>1268</b>
--	------------------------	-----------------------------	---

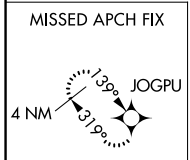
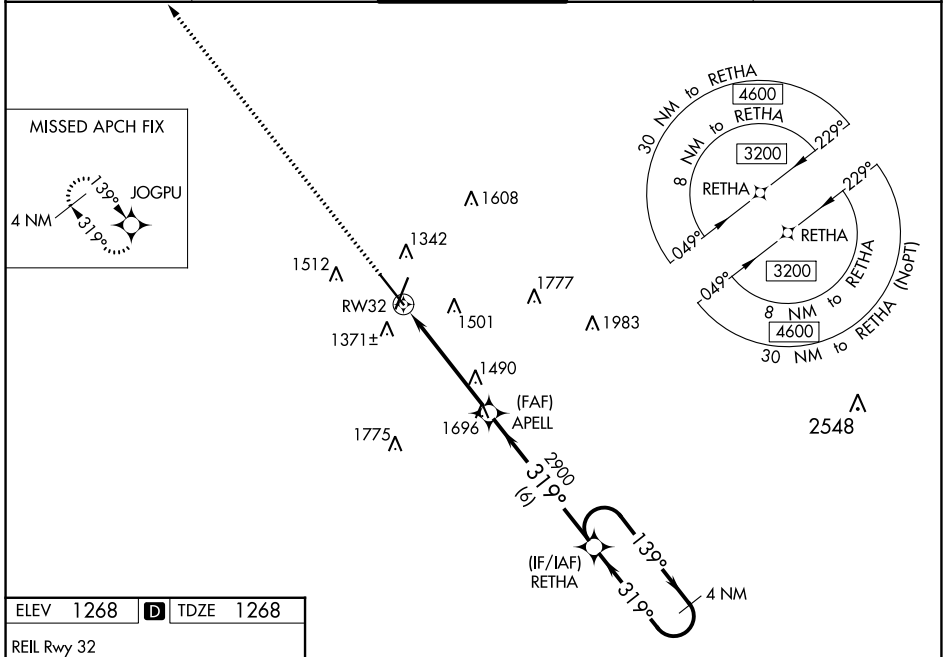
# RNAV (GPS) RWY 32

SPRINGFIELD-BRANSON NTL (SGF)

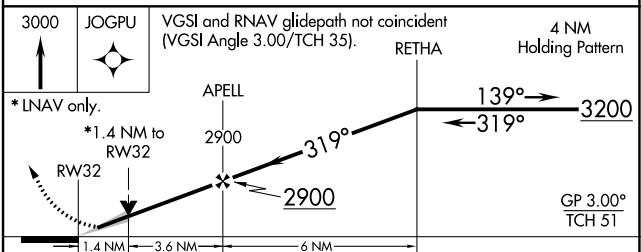
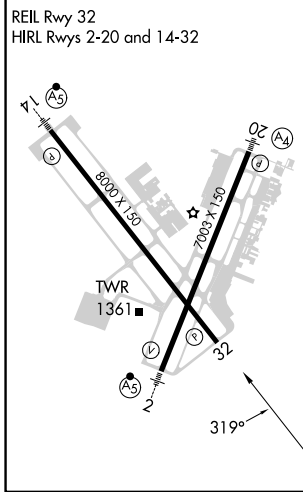
**⚠** Baro-VNAV and VDP NA when using Monett altimeter setting. For uncompensated Baro-VNAV systems, LNAV/VNAV NA below -16°C (4°F) or above 54°C (130°F). When local altimeter setting not received, use Monett altimeter setting and increase all DA 90 feet and all MDA 100 feet; increase LPV all Cats visibility ½ mile, LNAV/VNAV all Cats ¾ mile, LNAV Cats C and D ¼ mile and Circling Cat C ¼ mile and Cat D ½ mile. DME/DME RNP- 0.3 NA.

**MISSED APPROACH:**  
Climb to 3000 direct JOGPU and hold.

ATIS <b>135.125</b>	SPRINGFIELD APP CON <b>124.95 290.5</b>	SPRINGFIELD TOWER <b>119.9 257.8</b>	GND CON <b>121.9 251.15</b>	CLNC DEL <b>123.675</b>
------------------------	--	---	--------------------------------	----------------------------



ELEV 1268	<b>D</b>	TDZE 1268
-----------	----------	-----------



CATEGORY	A	B	C	D
LPV DA	1518-1		250 (300-1)	
LNAV/VNAV DA	1660-1¼		392 (400-1¼)	
LNAV MDA	1740-1 472 (500-1)		1740-1¾ 472 (500-1¾)	
<b>C</b> CIRCLING	1760-1 492 (500-1)	1820-1 552 (600-1)	1820-1½ 552 (600-1½)	1920-2 652 (700-2)

NC-3, 26 DEC 2024 to 23 JAN 2025

NC-3, 26 DEC 2024 to 23 JAN 2025