

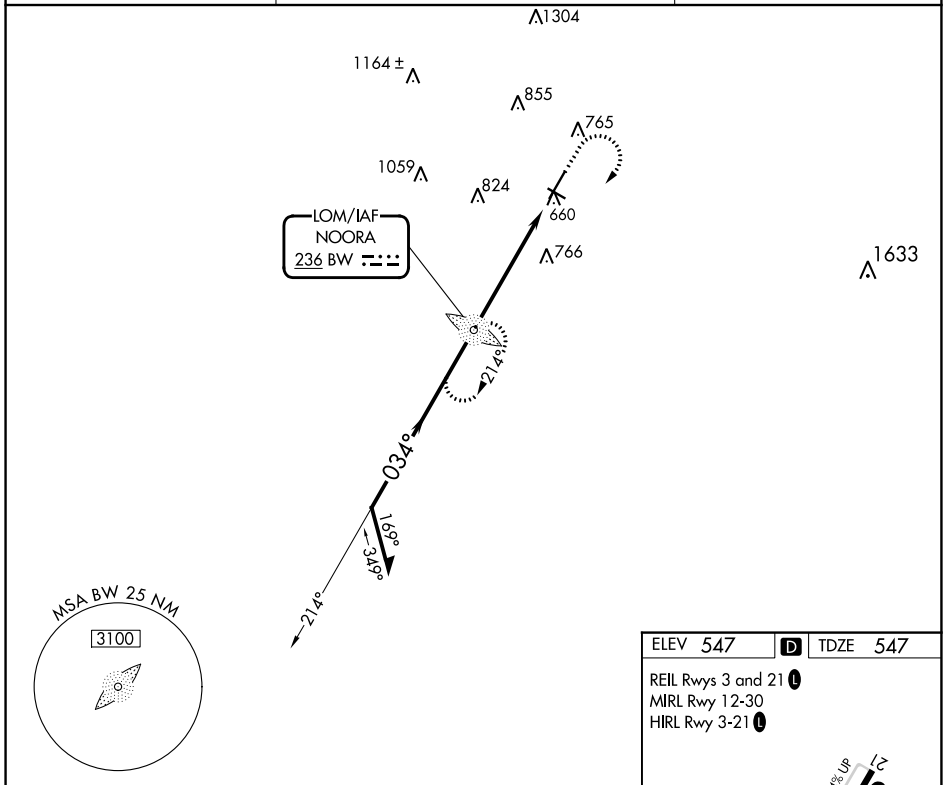
LOM BW	APP CRS	Rwy Idg	6500
236	034°	TDZE	547
		Apt Elev	547

NDB RWY 3

BOWLING GREEN-WARREN COUNTY RGNL (BWG)

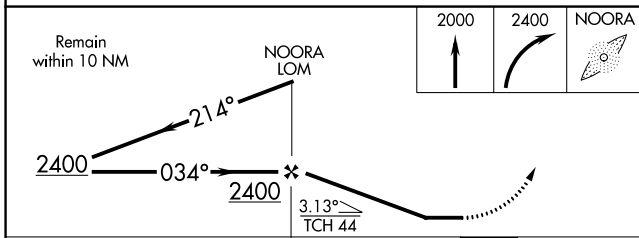
<p>▽</p> <p>▲ NA Circling to Rwy 30 NA at night.</p>	<p>MISSED APPROACH: Climb to 2000 then climbing right turn to 2400 direct NOORA LOM and hold.</p>
--	---

ASOS 127.825	MEMPHIS CENTER 133.85 285.5	UNICOM 123.0 (CTAF) L
------------------------	---------------------------------------	--



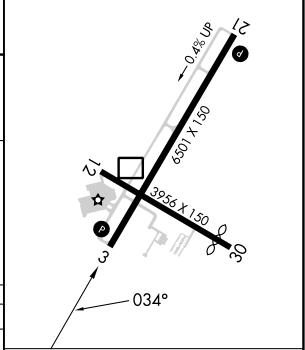
SE-1, 26 DEC 2024 to 23 JAN 2025

SE-1, 26 DEC 2024 to 23 JAN 2025



ELEV 547	D	TDZE 547
----------	----------	----------

REIL Rwy 3 and 21 **L**
 MRL Rwy 12-30
 HIRL Rwy 3-21 **L**



CATEGORY	A	B	C	D
S-3	1120-1	573 (600-1)	1120-1 $\frac{5}{8}$	573 (600-1 $\frac{5}{8}$)
C CIRCLING	1120-1	573 (600-1)	1160-1 $\frac{3}{4}$ 613 (700-1 $\frac{3}{4}$)	1200-2 653 (700-2)

FAF to MAP 5.4 NM					
Knots	60	90	120	150	180
Min:Sec	5:24	3:36	2:42	2:10	1:48