

# FNTSY ONE ARRIVAL (RNAV) Transition Routes

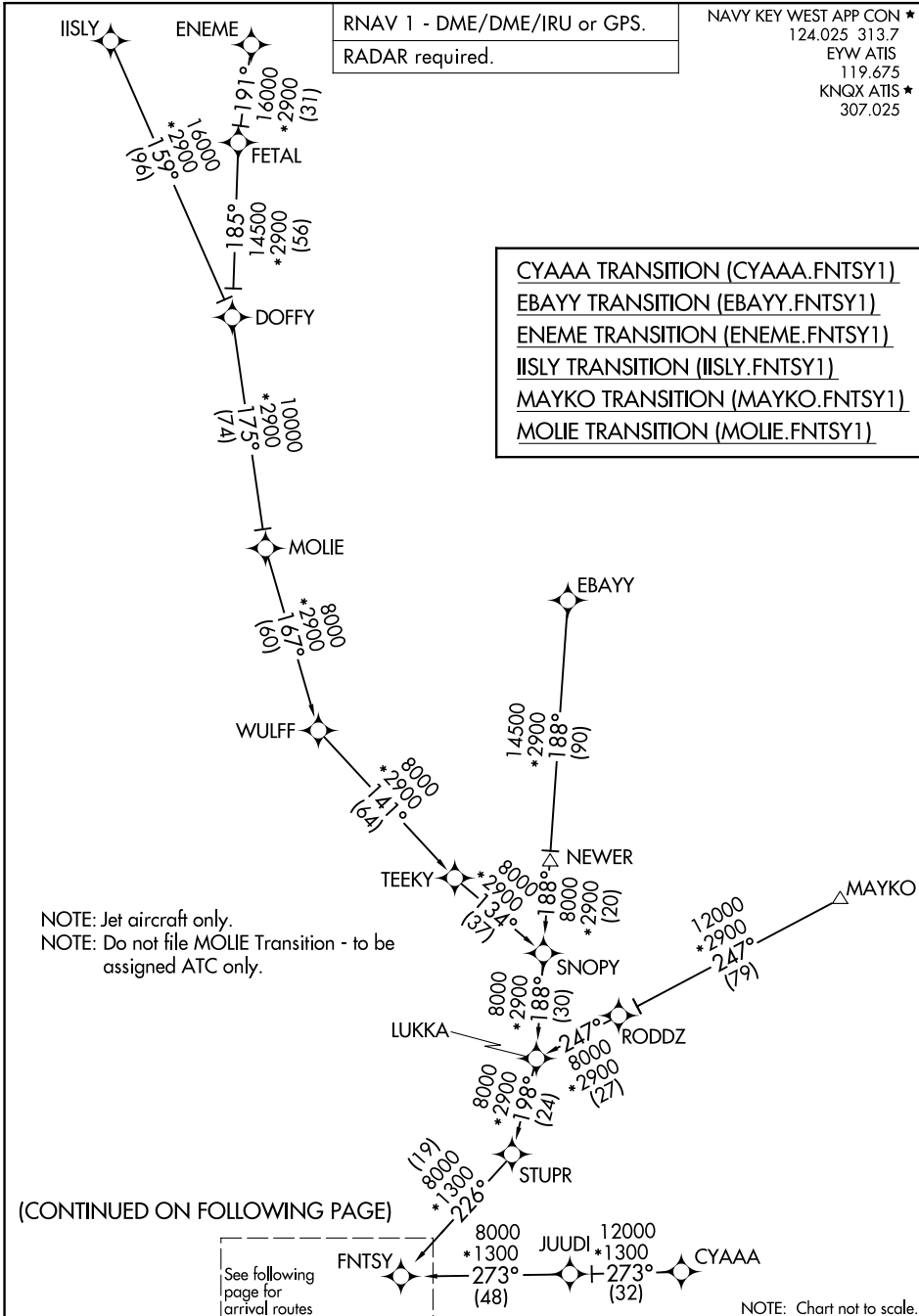
KEY WEST, FLORIDA

RNAV 1 - DME/DME/IRU or GPS.

RADAR required.

NAVY KEY WEST APP CON \*  
 124.025 313.7  
 EYW ATIS  
 119.675  
 KNQX ATIS \*  
 307.025

- CYAAA TRANSITION (CYAAA.FNTSY1)
- EBAYY TRANSITION (EBAYY.FNTSY1)
- ENEME TRANSITION (ENEME.FNTSY1)
- IISLY TRANSITION (IISLY.FNTSY1)
- MAYKO TRANSITION (MAYKO.FNTSY1)
- MOLIE TRANSITION (MOLIE.FNTSY1)



NOTE: Jet aircraft only.  
 NOTE: Do not file MOLIE Transition - to be assigned ATC only.

(CONTINUED ON FOLLOWING PAGE)

See following page for arrival routes

NOTE: Chart not to scale.

SE-3, 26 DEC 2024 to 23 JAN 2025

SE-3, 26 DEC 2024 to 23 JAN 2025

# FNTSY ONE ARRIVAL (RNAV) Transition Routes

KEY WEST, FLORIDA

FNTSY ONE ARRIVAL (RNAV) (FNTSY.FNTSY1) 31 OCT 24

Arrival Routes

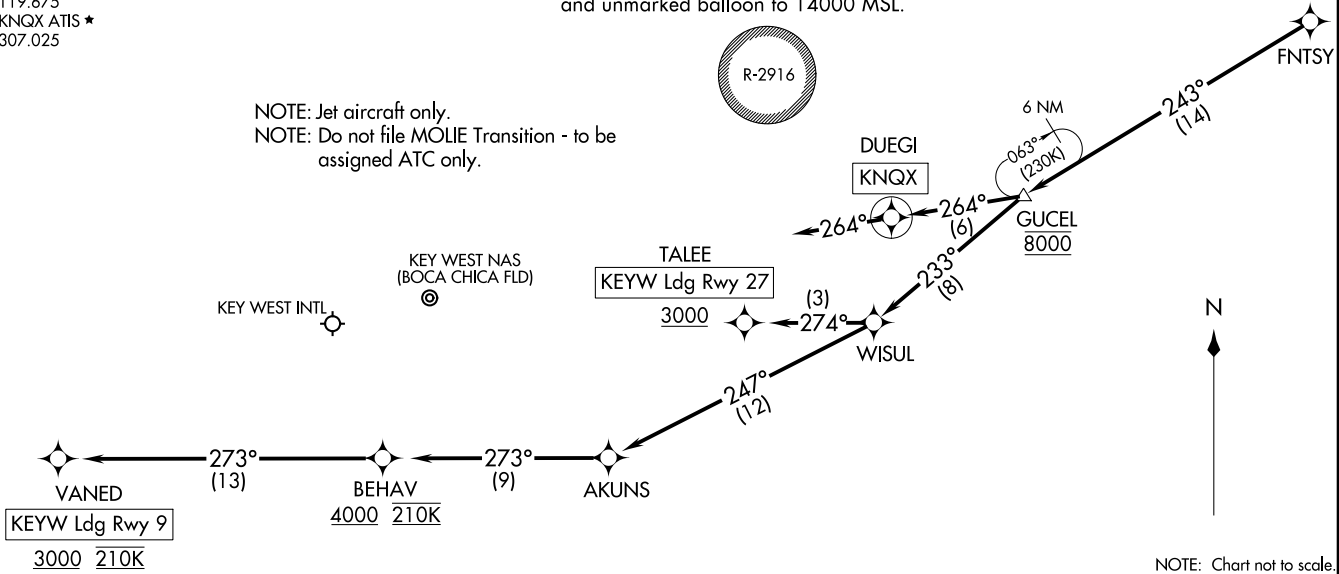
KEY WEST, FLORIDA

NAVY KEY WEST APP CON★  
 124.025 313.7  
 EYW ATIS  
 119.675  
 KNQX ATIS★  
 307.025

RESTRICTED AREA R-2916 - Caution cable and unmarked balloon to 14000 MSL.

RNAV 1 - DME/DME/IRU or GPS.  
 RADAR required.

NOTE: Jet aircraft only.  
 NOTE: Do not file MOLIE Transition - to be assigned ATC only.



NOTE: Chart not to scale.

**ARRIVAL ROUTE DESCRIPTION**

KEYW: From FNTSY on track 243° to cross GUCEL at 8000, then on track 233° to WISUL.  
LANDING KEYW RUNWAY 9: From WISUL on track 247° to AKUNS, then on track 273° to cross BEHAV at or above 4000 and at 210K, then on track 273° to cross VANED at or above 3000 and at 210K. Expect RNAV (GPS) RWY 9 approach.  
LANDING KEYW RUNWAY 27: From WISUL on track 274° to cross TALEE at or above 3000. Expect RNAV (GPS) RWY 27 approach.  
LANDING KNQX: From FNTSY on track 243° to cross GUCEL at 8000, then on track 264° to DUEGI, then on track 264°. Expect RADAR vectors to final approach course.

(FNTSY.FNTSY1) 24305  
 FNTSY ONE ARRIVAL (RNAV) Arrival Routes

AL-606 (FAA)  
 Arrival Routes

KEY WEST, FLORIDA