

WAAS CH 40405 W09A	APP CRS 093°	Rwy Idg 4801 TDZE 3 Apt Elev 3
--	------------------------	---

RNAV (GPS) RWY 9

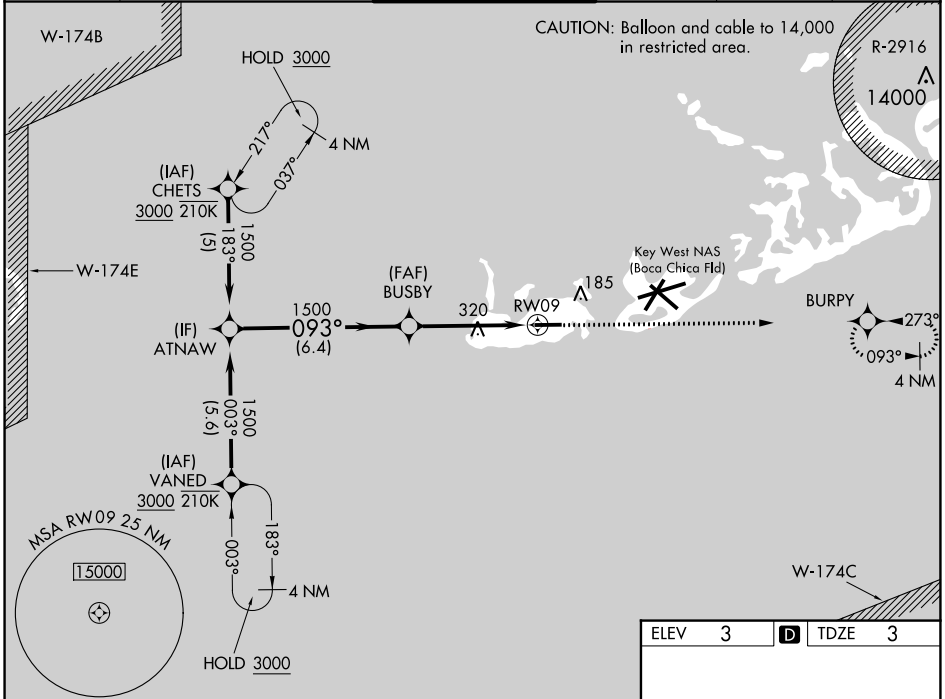
KEY WEST INTL (EYW)

RNP APCH-GPS.

▼ For uncompensated Baro-VNAV systems, LNAV/VNAV NA below 12°C or above 54°C.
▲ Rwy 9 helicopter visibility reduction below 3/4 SM NA. Baro-VNAV and VDP NA when using
W NQX altimeter setting. When local altimeter setting not received, use NQX altimeter setting.

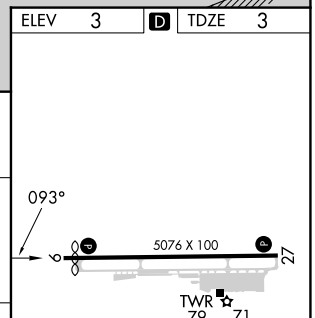
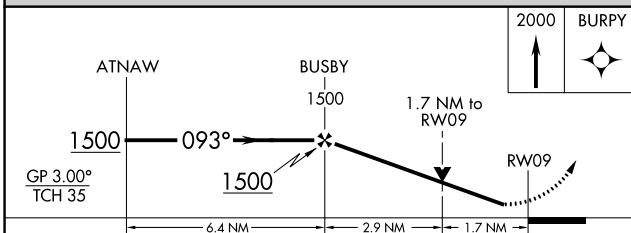
MISSED APPROACH:
Climb to 2000 direct BURPY and hold.

ATIS 119.675	NAVY KEY WEST APP CON * 124.025 313.7	KEY WEST TOWER * 118.2 (CTAF) 257.8	GND CON 121.9	CLNC DEL 121.9	UNICOM 122.95
------------------------	---	---	-------------------------	--------------------------	-------------------------



SE-3, 26 DEC 2024 to 23 JAN 2025

SE-3, 26 DEC 2024 to 23 JAN 2025



CATEGORY	A	B	C	D
LPV DA	253-1		250 (300-1)	
LNAV/VNAV DA	425-1 1/4		422 (500-1 1/4)	
LNAV MDA	580-1	577 (600-1)	580-1 5/8	577 (600-1 5/8)
CIRCLING	580-1	577 (600-1)	620-1 3/4 617 (700-1 3/4)	620-2 617 (700-2)

MIRL Rwy 9-27
REIL Rws 9 and 27