

APP CRS	Rwy Idg	<b>7200</b>
<b>137°</b>	TDZE	<b>579</b>
	Apt Elev	<b>589</b>

# RNAV (GPS) RWY 14

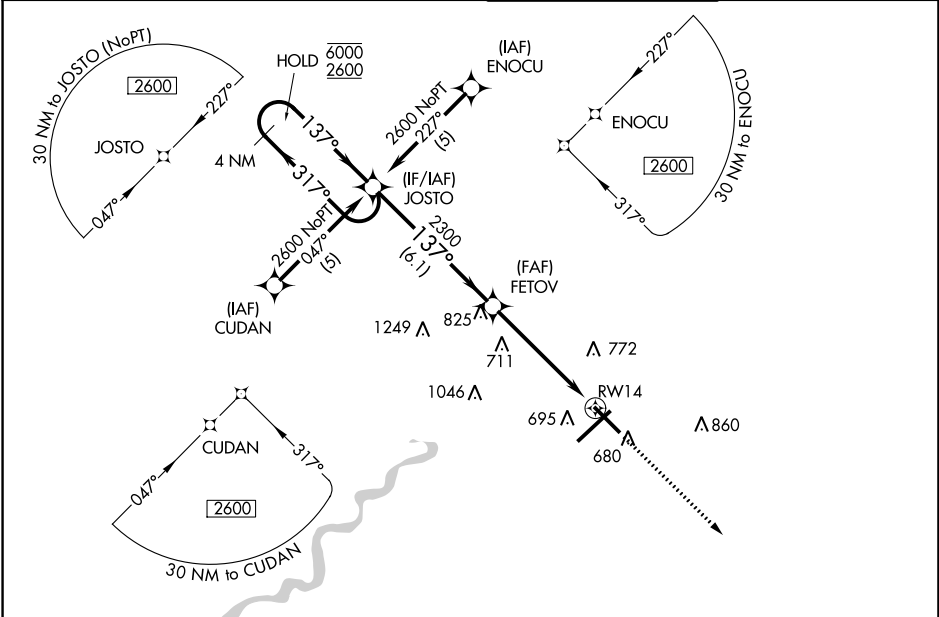
TERRE HAUTE RGNL (HUF')

RNP APCH.

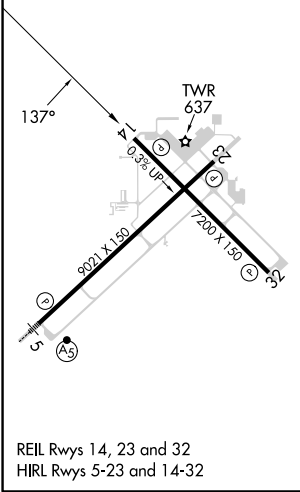
**V** VDP NA when using Paris altimeter setting. When local altimeter setting not received, use Paris altimeter setting and increase all MDA 80 feet, increase LNAV and Circling Cat C/D visibility 1/4 SM. Rwy 14 helicopter visibility reduction below 3/4 SM NA.  
**A** ASR

**MISSED APPROACH:**  
 Climb to 2600 direct CORIE and hold.

ATIS <b>127.5 269.375</b>	HULMAN APP CON <b>125.45 339.8</b>	HULMAN TOWER <b>134.725 322.475</b>	GND CON <b>121.6 348.6</b>
------------------------------	---------------------------------------	--	-------------------------------



ELEV 589	<b>D</b>	TDZE 579
----------	----------	----------



REIL Rws 14, 23 and 32  
 HIRL Rws 5-23 and 14-32

**A 1553**

4 NM Holding Pattern		JOSTO	2600	CORIE
6000 ← 317°		→ 137°	↑	✧
2600		137°	* LNAV only.	
VGSI and descent angles not coincident (VGSI Angle 2.75/TCH 59).		FETOV	* 1.2 NM to RWY 14	
		2300	RWY 14	
		3.04°	TCH 55	
		6.1 NM	4 NM	1.2
CATEGORY	A	B	C	D
LNAV MDA	1140-1	561 (600-1)	1140-1½	561 (600-1½)
<b>C</b> CIRCLING	1140-1	551 (600-1)	1220-1¾ 631 (700-1¾)	1220-2 631 (700-2)

EC-2, 26 DEC 2024 to 23 JAN 2025

EC-2, 26 DEC 2024 to 23 JAN 2025