

APP CRS <b>317°</b>	Rwy Idg <b>7200</b>
	TDZE <b>589</b>
	Apt Elev <b>589</b>

# RNAV (GPS) RWY 32

TERRE HAUTE RGNL (HUF')

RNP APCH.

**▼** VDP NA when using Paris altimeter setting. Rwy 32 helicopter visibility reduction below 3/4 SM NA.  
**▲** When local altimeter setting not received, use Paris altimeter setting and increase all MDAs 80 ASR feet, LNAV Cat C/D visibility to 1 3/8 SM and Circling Cat C/D 1/4 SM.

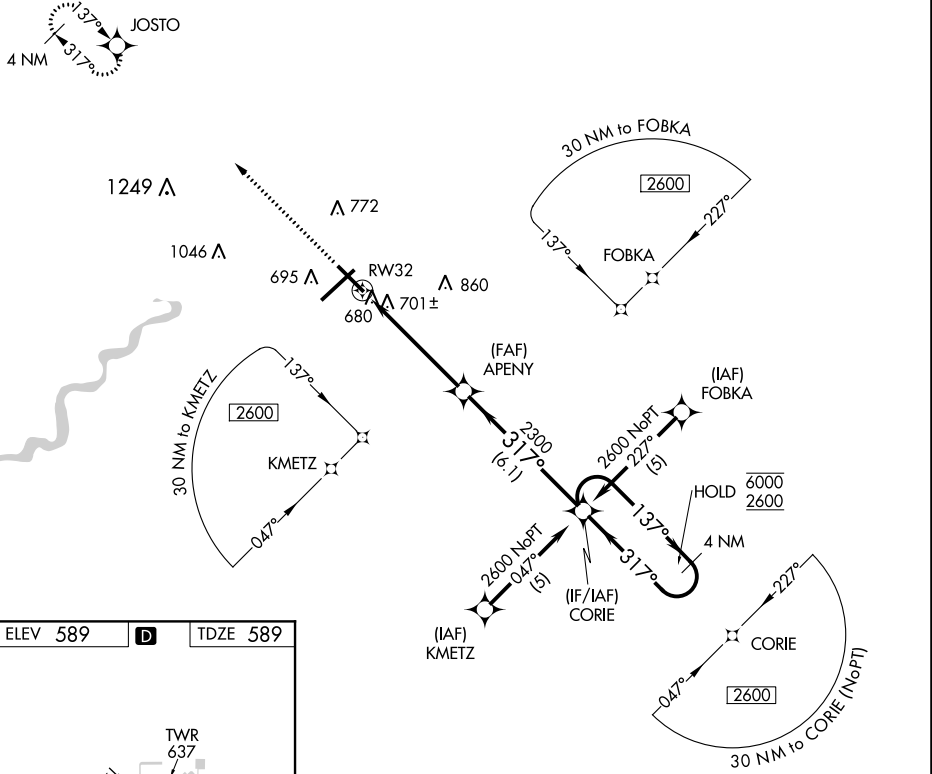
**MISSED APPROACH:**  
Climb to 2600 direct JOSTO and hold.

ATIS  
**127.5 269.375**

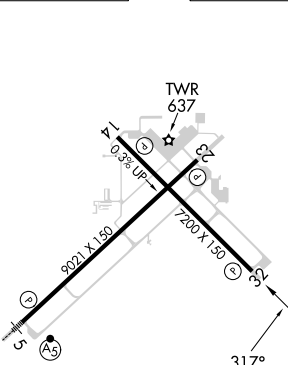
HULMAN APP CON  
**125.45 339.8**

HULMAN TOWER  
**134.725 322.475**

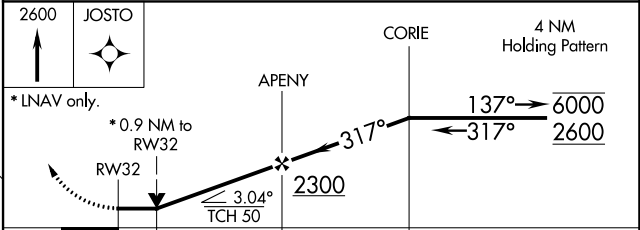
GND CON  
**121.6 348.6**



ELEV 589 **D** TDZE 589



REIL Rws 14, 23 and 32
HIRL Rws 5-23 and 14-32



CATEGORY	A	B	C	D
LNAV MDA	980-1	391 (400-1)	980-1 1/8 391 (400-1 1/8)	980-1 1/4 391 (400-1 1/4)
<b>C</b> CIRCLING	1040-1	451 (500-1)	1220-1 3/4 631 (700-1 3/4)	1220-2 631 (700-2)

EC-2, 26 DEC 2024 to 23 JAN 2025

EC-2, 26 DEC 2024 to 23 JAN 2025