

WAAS CH 82109 W05A	APP CRS 049°	Rwy Idg 9020 TDZE 573 Apt Elev 589
--	------------------------	---

RNAV (GPS) RWY 5

TERRE HAUTE RGNL (HUF)

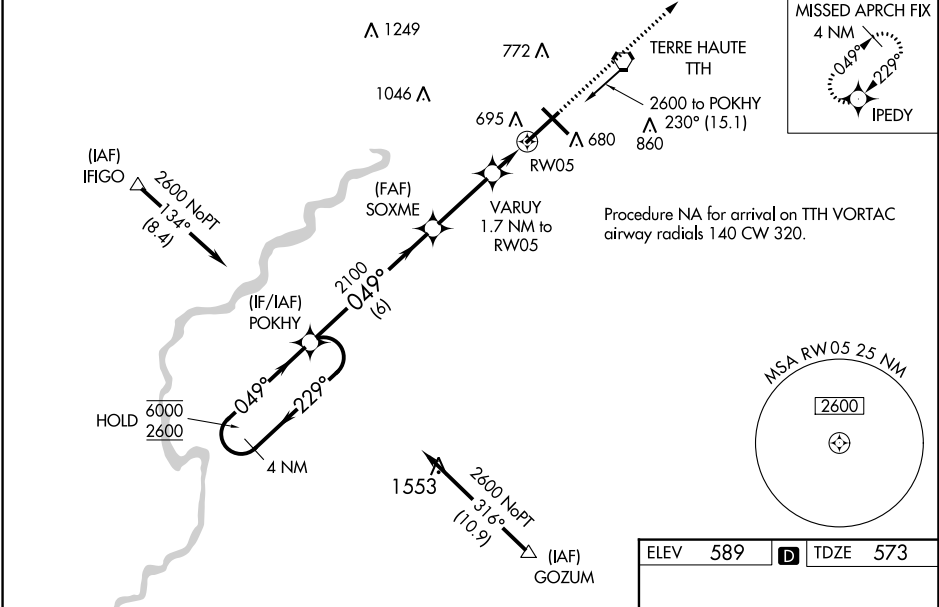
RNP APCH.

ASR For uncompensated Baro-VNAV systems, LNAV/VNAV NA below -16°C or above 47°C. VDP and Baro-VNAV NA when using Paris altimeter setting. When local altimeter setting not received, use Paris altimeter setting and increase all DA 61 feet, and all MDA 80 feet. Increase LPV all Cats visibility ¼ SM and Circling Cat C/D visibility ½ SM. For inoperative ALS, increase LPV all Cats visibility to RVR 4500, LNAV/VNAV all Cats visibility to RVR 5500 and LNAV Cat C/D visibility to RVR 6000, when using Paris altimeter setting, increase LPV and LNAV/VNAV visibility all Cats to RVR 6000, increase LNAV Cat C/D visibility to 1 ¾ SM.

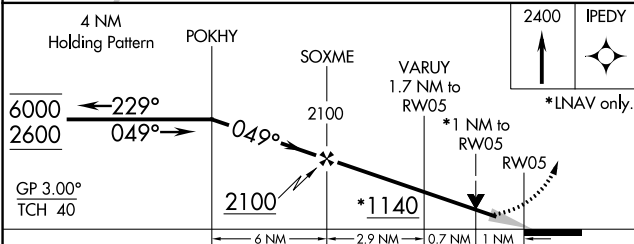
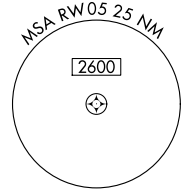


MISSED APPROACH:
Climb to 2400 direct IPEDY and hold.

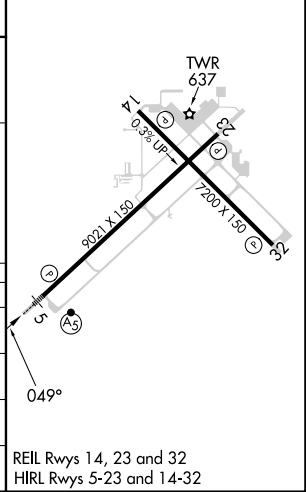
ATIS 127.5 269.375	HULMAN APP CON 125.45 339.8	HULMAN TOWER 134.725 322.475	GND CON 121.6 348.6
------------------------------	---------------------------------------	---	-------------------------------



Procedure NA for arrival on TTH VORTAC
airway radials 140 CW 320.



ELEV 589	D	TDZE 573
----------	----------	----------



CATEGORY	A	B	C	D
LPV DA		875/24	302 (300-½)	
LNAV/VNAV DA		924/40	351 (400-¾)	
LNAV MDA		960/50	387 (400-1)	
CIRCLING	1040-1	451 (500-1)	1220-1¾ 631 (700-1¾)	1220-2 631 (700-2)

EC-2, 26 DEC 2024 to 23 JAN 2025

EC-2, 26 DEC 2024 to 23 JAN 2025