

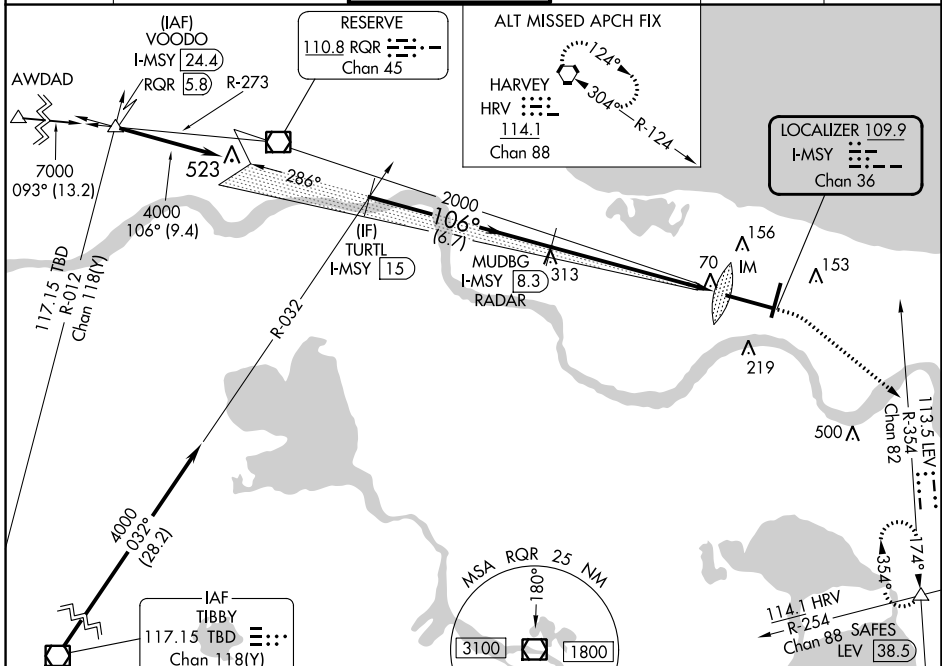
LOC/DME I-MSY 109.9 Chan 36	APP CRS 106°	Rwy Idg TDZE Apt Elev 4	9800 4 4
---	------------------------	--------------------------------------	-------------------------------------

ILS RWY 11 (SA CAT I)

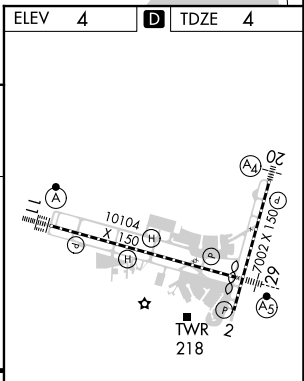
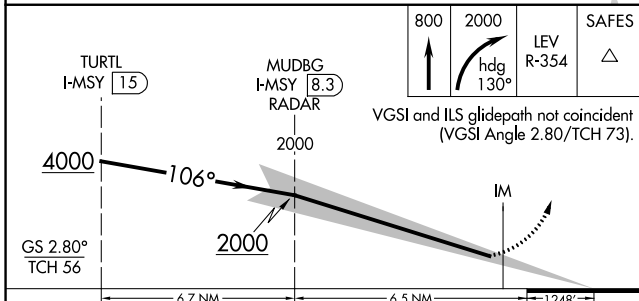
LOUIS ARMSTRONG NEW ORLEANS INTL (MSY)

RADAR or DME required.		ALSF-2	MISSED APPROACH: Climb to 800 then climbing right turn to 2000 on heading 130° and on LEV VORTAC R-354 to SAFES INT/LEV 38.5 DME and hold.	
▼ Requires specific OPSPEC, MSPEC, or LOA approval and use of HUD to DH.		(A)		

D-ATIS 127.55	NEW ORLEANS APP CON WEST 125.5 350.35 EAST 133.15 290.3	NEW ORLEANS TOWER 119.5 254.3	GND CON 121.9 273.525	CLNC DEL 120.925	CPDLC
-------------------------	---	---	---------------------------------	----------------------------	-------



ELEV 4	D TDZE 4
---------------	------------------------



CATEGORY	A	B	C	D
S-ILS 11	RA 150/14 150		DA 154	
SA CATEGORY I ILS - SPECIAL AIRCREW & AIRCRAFT CERTIFICATION REQUIRED				

RLS Rwy 2
TDZ/CL Rwy 11
HIRL All Runways

SC-4, 26 DEC 2024 to 23 JAN 2025

SC-4, 26 DEC 2024 to 23 JAN 2025