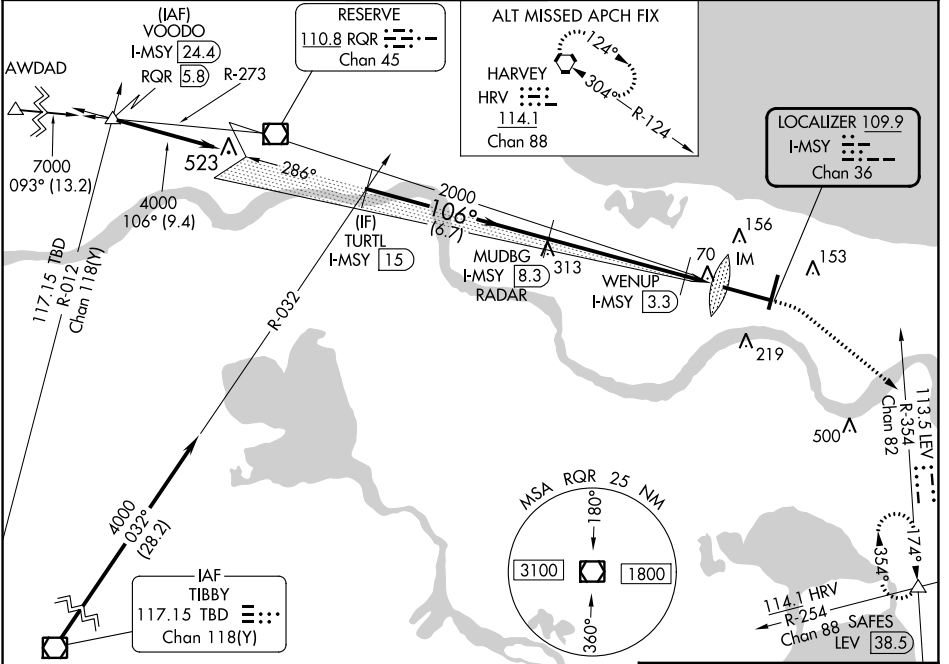


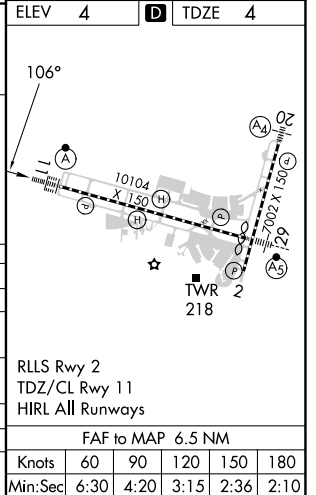
LOC/DME I-MSY 109.9 Chan 36	APP CRS 106°	Rwy Idg 9800 TDZE 4 Apt Elev 4
---	------------------------	---

ILS or LOC RWY 11
LOUIS ARMSTRONG NEW ORLEANS INTL (MSY)

RADAR or DME required. For inop ALS, increase S-LOC 11 Cat C/D visibility to 1½ SM and increase WENUP fix minimums S-LOC 11 Cat C/D visibility to RVR 4500.		ALSF-2 A	MISSED APPROACH: Climb to 800 then climbing right turn to 2000 on heading 130° and on LEV VORTAC R-354 to SAFES INT/LEV 38.5 DME and hold.		
D-ATIS 127.55	NEW ORLEANS APP CON WEST 125.5 350.35 EAST 133.15 290.3	NEW ORLEANS TOWER 119.5 254.3	GND CON 121.9 273.525	CLNC DEL 120.925	CPDLC



TURTLE I-MSY (15)	VGS and ILS glidepath not coincident (VGS Angle 2.80/TCH 73).		800	2000	SAFES	ELEV 4	TDZE 4
4000	106°	2000	500	IM	LEV R-354		
GS 2.80° TCH 56	6.7 NM	5 NM	0.6	0.8	WENUP I-MSY 3.3		
					I-MSY 2.7		
					I-MSY 1.8		
CATEGORY	A	B	C	D			
S-ILS 11	204/18		200 (200-½)				
S-LOC 11	500/24	496 (500-½)	500/50	496 (500-1)			
CIRCLING	520-1	516 (600-1)	580-1½ 576 (600-1½)	600-2 596 (600-2)			
WENUP FIX MINIMUMS							
S-LOC 11	320/24		316 (400-½)				
CIRCLING	520-1	516 (600-1)	580-1½ 576 (600-½)	600-2 596 (600-2)			



SC-4, 26 DEC 2024 to 23 JAN 2025

SC-4, 26 DEC 2024 to 23 JAN 2025

RLS Rwy 2	FAF to MAP 6.5 NM				
TDZ/CL Rwy 11					
HIRL All Runways					
Knots	60	90	120	150	180
Min:Sec	6:30	4:20	3:15	2:36	2:10