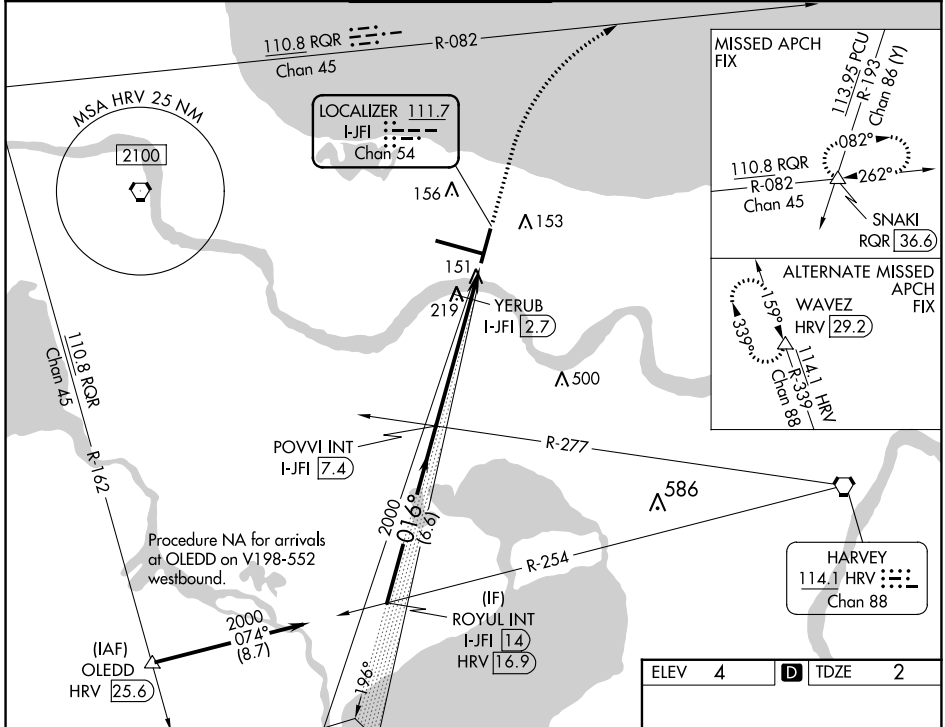


LOC/DME I-JFI 111.7 Chan 54	APP CRS 016°	Rwy Idg 7002 TDZE 2 Apt Elev 4
---	------------------------	---

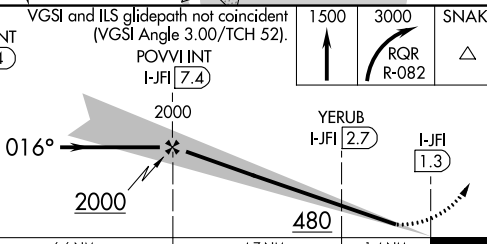
ILS or LOC RWY 2

LOUIS ARMSTRONG NEW ORLEANS INTL (MSY)

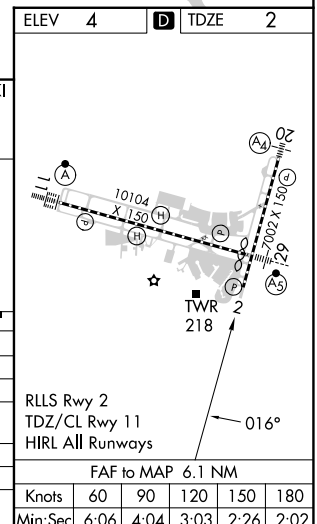
DME required for procedure entry.		MISSED APPROACH: Climb to 1500 then climbing right turn to 3000 on RQR VOR/DME R-082 to SNAKI INT/RQR 36.6 DME and hold.				
Autopilot coupled approach NA below 880. Rwy 2 helicopter visibility reduction below RVR 4000 NA.	D-ATIS 127.55	NEW ORLEANS APP CON WEST 125.5 350.35 EAST 133.15 290.3	NEW ORLEANS TOWER 119.5 254.3	GND CON 121.9 273.525	CLNC DEL 120.925	CPDLC



Procedure NA for arrivals at OLEDD on V198-552 westbound.



CATEGORY	A	B	C	D
S-ILS 2		415/60	413 (500-1¼)	
S-LOC 2	480/55	478 (500-1)	480-1⅜	478 (500-1⅜)
C CIRCLING	520-1	516 (600-1)	580-1½ 576 (600-1½)	580-2 576 (600-2)
YERUB FIX MINIMUMS				
S-LOC 2	420/55	418 (500-1)	420/60	418 (500-1¼)
C CIRCLING	520-1	516 (600-1)	580-1½ 576 (600-1½)	580-2 576 (600-2)



SC-4, 26 DEC 2024 to 23 JAN 2025

SC-4, 26 DEC 2024 to 23 JAN 2025