

LOC/DME I-HOX 109.9 Chan 36	APP CRS 286°	Rwy Idg 9800 TDZE 2 Apt Elev 4
---	------------------------	---

ILS or LOC RWY 29

LOUIS ARMSTRONG NEW ORLEANS INTL (MSY)

▼ DME or RADAR required. For inop MALSR, increase S-LOC 29 Cat C/D visibility to 1½ mile and increase KENLE Fix Minimums S-LOC 29 Cat C/D visibility to RVR 5500.
****RVR 1800 authorized with use of FD or AP or HUD to DA.**

MALSR

MISSED APPROACH: Climb to 600 then climbing right turn to 3000 direct RQR VOR/DME and hold.

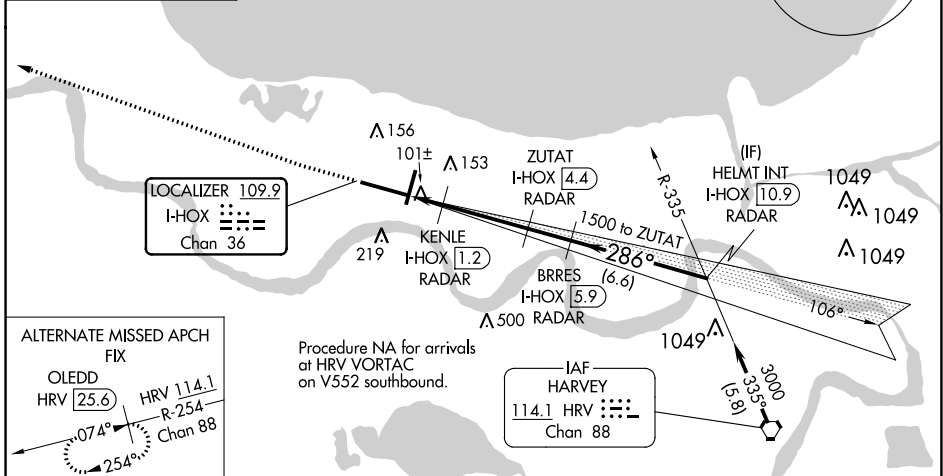
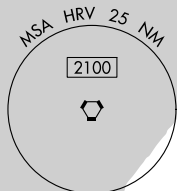
D-ATIS 127.55	NEW ORLEANS APP CON WEST 125.5 350.35 EAST 133.15 290.3	NEW ORLEANS TOWER 119.5 254.3	GND CON 121.9 273.525	CLNC DEL 120.925	CPDLC
-------------------------	---	---	---------------------------------	----------------------------	-------

MISSED APCH FIX

← R-273 → 093°

RESERVE RQR

110.8
Chan 45



ALTERNATE MISSED APCH FIX

OLEDD HRV **25.6** HRV **114.1**
R-254
Chan 88

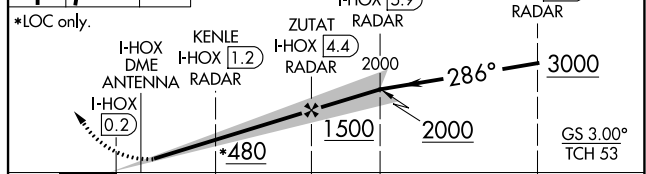
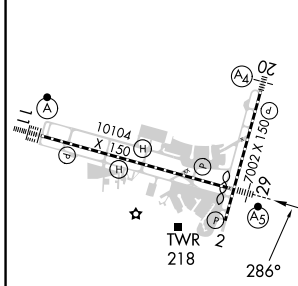
074°
254°

Procedure NA for arrivals at HRV VORTAC on V552 southbound.

IAF HARVEY
114.1 HRV

Chan 88

ELEV 4	D	TDZE 2	600	3000	RQR	VGSI and ILS glidepath not coincident (VGSI Angle 3.00/TCH 68).
---------------	----------	---------------	-----	------	-----	---



RLS Rwy 2 TDZ/CL Rwy 11 HIRL All Runways	FAF to MAP 4.5 NM				
Knots	60	90	120	150	180
Min:Sec	4:30	3:00	2:15	1:48	1:30
C CIRCLING	520-1	516 (600-1)	580-1½ 576 (600-1½)	600-2 596 (600-2)	
KENLE FIX MINIMUMS					
S-LOC 29	360/24	358 (400-½)	360/30	358 (400-¾)	
C CIRCLING	520-1	516 (600-1)	580-1½ 576 (600-1½)	600-2 596 (600-2)	

SC-4, 26 DEC 2024 to 23 JAN 2025

SC-4, 26 DEC 2024 to 23 JAN 2025