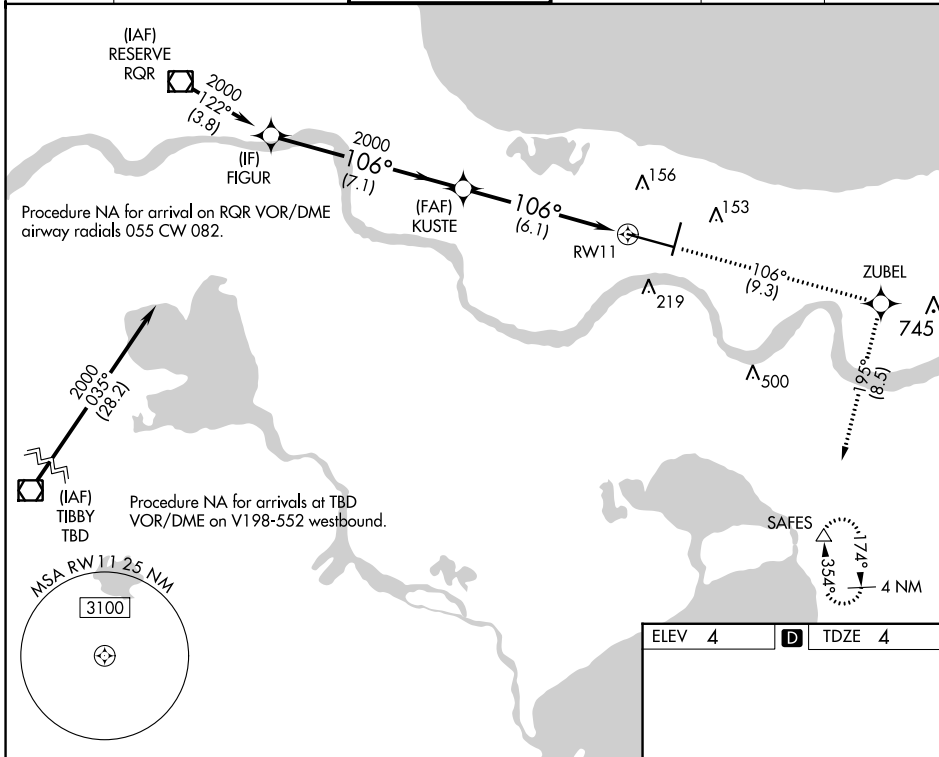


APP CRS	Rwy Idg	9800
106°	TDZE	4
	Apt Elev	4

RNAV (RNP) Z RWY 11

LOUIS ARMSTRONG NEW ORLEANS INTL (MSY)

RNP AR APCH - GPS.		NEW ORLEANS TOWER		GND CON	CLNC DEL	CPDLC
<p>▼ For uncompensated Baro-VNAV systems, procedure NA below -1°C or above 54°C. For inop ALS, increase RNP 0.30 all Cats visibility to RVR 5500.</p>		<p>125.5 350.35 133.15 290.3</p>		<p>119.5 254.3</p>	<p>121.9 273.525</p>	<p>120.925</p>
D-ATIS	NEW ORLEANS APP CON					
127.55	WEST					
	EAST					



VGSI and RNAV glidepath not coincident (VGSI Angle 2.80/TCH 73).	2000	↑	tr 106°	ZUBEL	↑	tr 195°	SAFES	△
FIGUR	KUSTE							
2000	2000							
GP 3.00°								
TCH 55								
	7.1 NM		6.1 NM					
CATEGORY	A	B	C	D				
RNP 0.30 DA	367/35		363 (400-5/8)					
AUTHORIZATION REQUIRED								

ELEV 4	D	TDZE 4
--------	----------	--------

RLS Rwy 2
TDZ/CL Rwy 11
HIRL All Runways

SC-4, 26 DEC 2024 to 23 JAN 2025

SC-4, 26 DEC 2024 to 23 JAN 2025