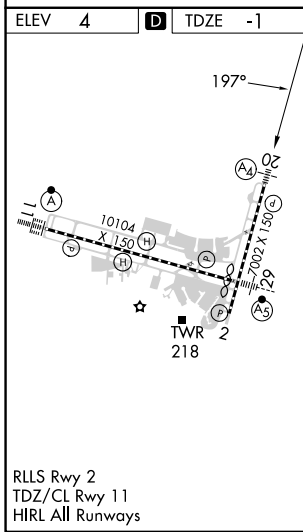
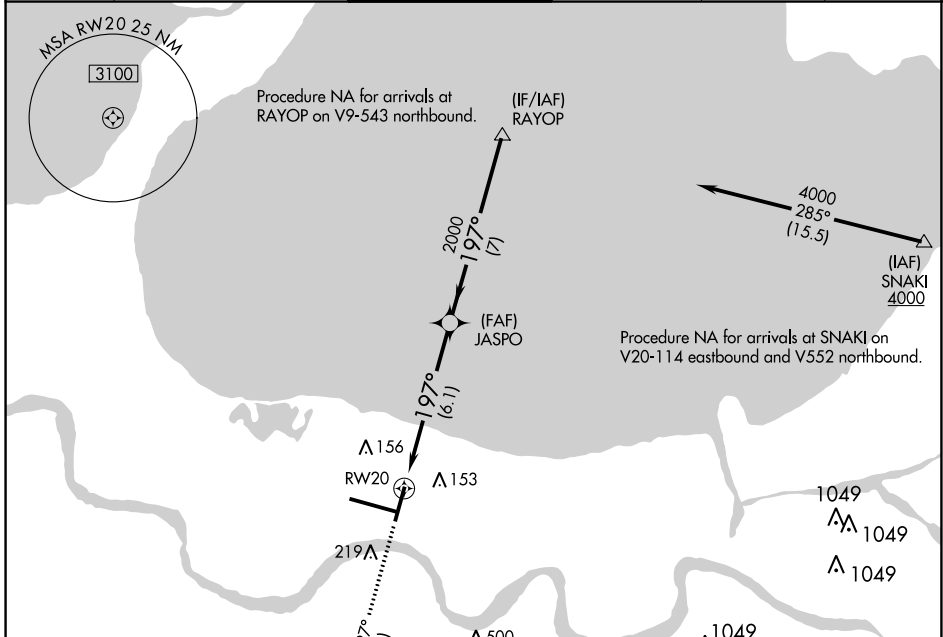


| | |
|------------------------|------------------------|
| APP CRS 197° | Rwy Idg 6948 |
| | TDZE -1 |
| | Apt Elev 4 |

RNAV (RNP) Z RWY 20

LOUIS ARMSTRONG NEW ORLEANS INTL (MSY)

| | | | | |
|--|---|---|---|----------------------------|
| RNP AR APCH - GPS. | | MALS | MISSED APPROACH: Climb to 2000 on track 197° to POLIY and track 109° to SAFES and hold. | |
| ▼ For uncompensated Baro-VNAV systems, procedure NA below -1°C or above 54°C. For inop ALS, increase RNP 0.30 all Cats visibility to RVR 6000. | | | | |
| D-ATIS 127.55 | NEW ORLEANS APP CON WEST 125.5 350.35 EAST 133.15 290.3 | NEW ORLEANS TOWER 119.5 254.3 | GND CON 121.9 273.525 | CLNC DEL 120.925 |
| | | | | CPDLC |



| | | | | | | | | | | | |
|-------------|----------|--|-----------------------|---------|----------|---------|-------|---------|---------|-------|------|
| ELEV 4 | D | TDZE -1 | MISSED APCH FIX SAFES | | | | | | | | |
| | | <table border="1"> <tr> <td>2000</td> <td>tr 197°</td> <td>POLIY</td> <td>tr 109°</td> <td>SAFES</td> </tr> </table> | | | 2000 | tr 197° | POLIY | tr 109° | SAFES | | |
| 2000 | tr 197° | POLIY | tr 109° | SAFES | | | | | | | |
| | | <table border="1"> <tr> <td>2000</td> <td>tr 197°</td> <td>JASPO</td> <td>2000</td> <td>tr 197°</td> <td>RAYOP</td> <td>4000</td> </tr> </table> | | | 2000 | tr 197° | JASPO | 2000 | tr 197° | RAYOP | 4000 |
| 2000 | tr 197° | JASPO | 2000 | tr 197° | RAYOP | 4000 | | | | | |
| | | <table border="1"> <tr> <td>GP 3.00°</td> <td>TCH 52</td> </tr> </table> | | | GP 3.00° | TCH 52 | | | | | |
| GP 3.00° | TCH 52 | | | | | | | | | | |
| CATEGORY | A | B | C | D | | | | | | | |
| RNP 0.11 DA | | 363/40 | 364 (400-¾) | | | | | | | | |
| RNP 0.30 DA | | 414/50 | 415 (500-1) | | | | | | | | |

AUTHORIZATION REQUIRED