

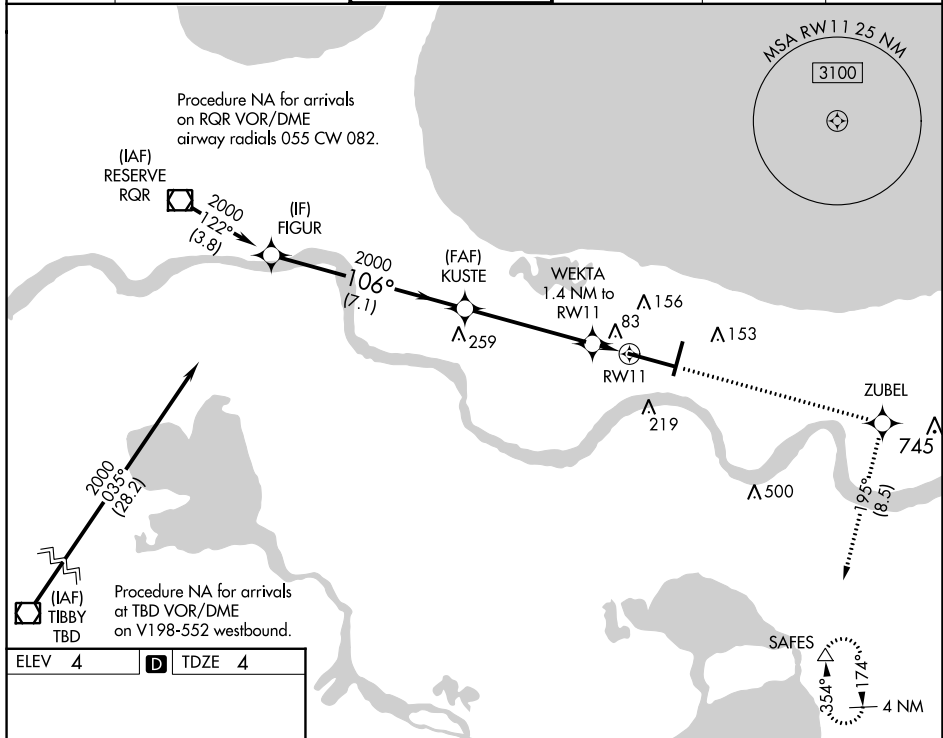
WAAS CH 61319 W11A	APP CRS 106°	Rwy Idg TDZE Apt Elev	9800 4 4
--	------------------------	-----------------------------	-------------------------------------

RNAV (GPS) Y RWY 11

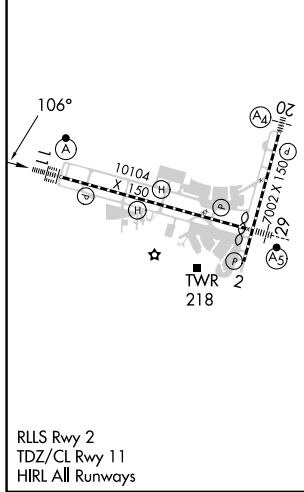
LOUIS ARMSTRONG NEW ORLEANS INTL (MSY)

RNP APCH - GPS.	ALSF-2	MISSED APPROACH: Climb to 2000 direct ZUBEL and on track 195° to SAFES and hold.
<p>▼ For uncompensated Baro-VNAV systems, LNAV/VNAV NA below -1°C or above 54°C. For inop ALSF-2, increase LNAV/VNAV all Cats visibility to RVR 4000.</p>		

D-ATIS 127.55	NEW ORLEANS APP CON WEST 125.5 350.35 EAST 133.15 290.3	NEW ORLEANS TOWER 119.5 254.3	GND CON 121.9 273.525	CLNC DEL 120.925	CPDLC
-------------------------	---	---	---------------------------------	----------------------------	-------



ELEV 4	D	TDZE 4
--------	----------	--------



VGSi and RNAV glidepath not coincident (VGSi Angle 2.80/TCH 73).		2000	ZUBEL	SAFES
FIGUR	KUSTE	2000	tr 195°	△
2000 — 106° —		WEKTA 1.4 NM to RWY11		
GP 3.00° TCH 55	2000	500	RWY11	
	7.1 NM	4.7 NM	1.4 NM	
CATEGORY	A	B	C	D
LPV DA	204/18 200 (200-½)			
LNAV/VNAV DA	254/24 250 (300-½)			
LNAV MDA	340/24	336 (400-½)	340/26	336 (400-½)
C CIRCLING	520-1	516 (600-1)	580-1½ 576 (600-1½)	600-2 596 (600-2)

SC-4, 26 DEC 2024 to 23 JAN 2025

SC-4, 26 DEC 2024 to 23 JAN 2025