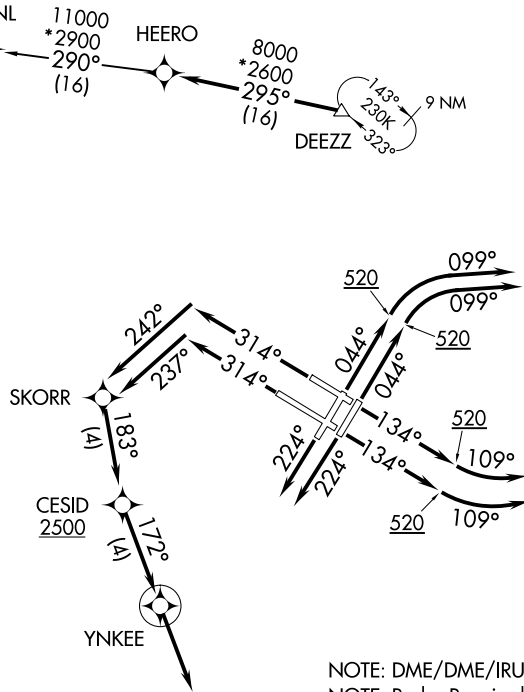
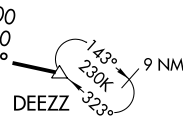
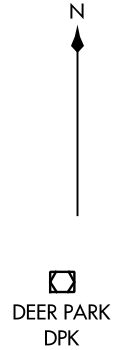


**TOP ALTITUDE:
5000**

(DEEZZ5:DEEZZ) 18200
DEEZZ FIVE DEPARTURE (RNAV)

AL6-10 (FAA)

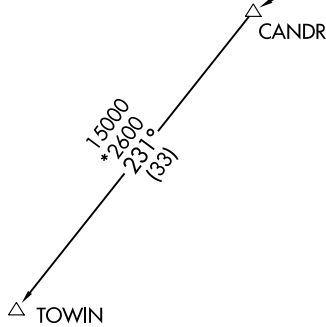
JOHN F KENNEDY INTL (JFK)
NEW YORK, NEW YORK



NOTE: DME/DME/IRU or GPS required.
NOTE: Radar Required.
NOTE: RNAV 1.
NOTE: TOWIN transition ATC assigned only.

NOTE: Chart not to scale.

D-ATIS
128.725
CLNC DEL
135.05 348.6
CPDLC
GND CON
121.9 348.6
KENNEDY TOWER
Rwys 4R/22L and 13L/31R
119.1 281.55
Rwys 4L/22R and 13R/31L
123.9 281.55
NEW YORK DEP CON
135.9 353.75



TAKEOFF MINIMUMS

Rwys 4L/R, 13L, 22L/R: Standard.
Rwy 13R: 300-1½ or Standard with minimum climb of 250' per NM to 300.
Rwys 31L/R: Standard with minimum climb of 500' per NM to 1400.

(NARRATIVE ON FOLLOWING PAGE)

DEEZZ FIVE DEPARTURE (RNAV)

(DEEZZ5:DEEZZ) 19JUL18

NEW YORK, NEW YORK
JOHN F KENNEDY INTL (JFK)

DEZZ FIVE DEPARTURE (RNAV)



DEPARTURE ROUTE DESCRIPTION

TAKEOFF RWYS 4L/R: Climb heading 044° to 520, then climbing right turn heading 099° or as assigned by ATC, thence

TAKEOFF RWYS 13L/R: Climb heading 134° to 520, then climbing left turn heading 109° or as assigned by ATC, thence

TAKEOFF RWYS 22L/R: Climb heading 224° or as assigned by ATC, thence

TAKEOFF RWY 31L: Climb heading 314° to intercept course 237° to SKORR, then on track 183° to cross CESID at or above 2500, then on track 172° to YNKKEE, then on heading 172° or as assigned by ATC, thence

TAKEOFF RWY 31R: Climb heading 314° to intercept course 242° to SKORR, then on track 183° to cross CESID at or above 2500, then on track 172° to YNKKEE, then on heading 172° or as assigned by ATC, thence

. . . . expect vectors to DEZZ, then on track 295° to HEERO. Maintain 5000. Expect clearance to filed altitude/flight level within ten (10) minutes after departure.

CANDR TRANSITION (DEZZ5.CANDR)

TOWIN TRANSITION (DEZZ5.TOWIN)

NE-2, 26 DEC 2024 to 23 JAN 2025

NE-2, 26 DEC 2024 to 23 JAN 2025