

LOC/DME I-HWY	APP CRS	Rwy Idg	8400
<b>110.9</b>	<b>224°</b>	TDZE	<b>12</b>
Chan <b>46</b>		Apt Elev	<b>13</b>

# ILS or LOC RWY 22L

JOHN F KENNEDY INTL (JFK)

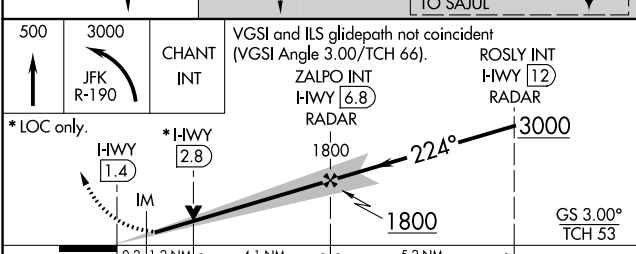
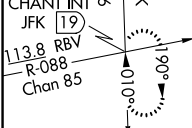
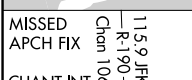
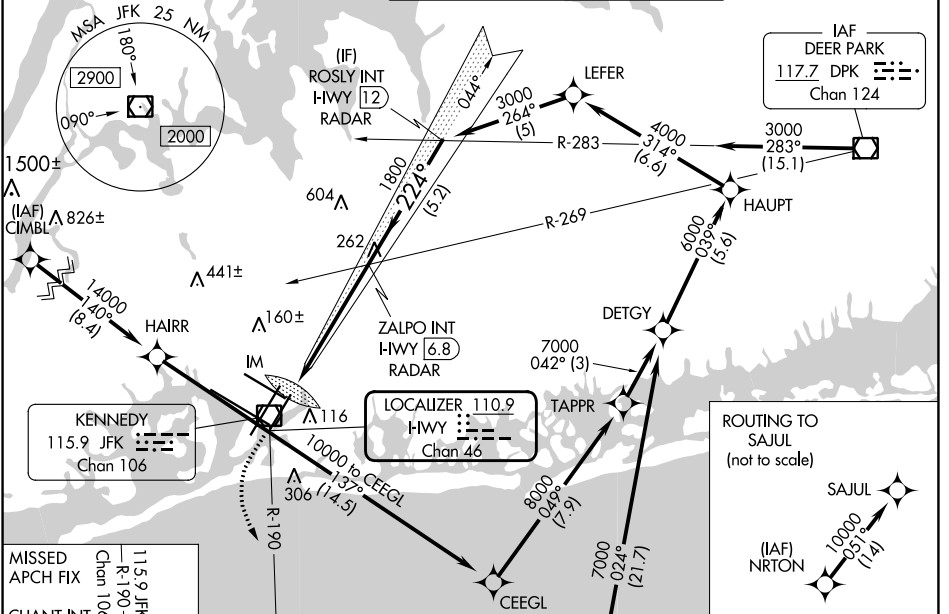
RNAV 1-GPS or RADAR required for procedure entry.  
 From CIMBL, NRTON: RNAV 1-GPS required.

ALSF-2

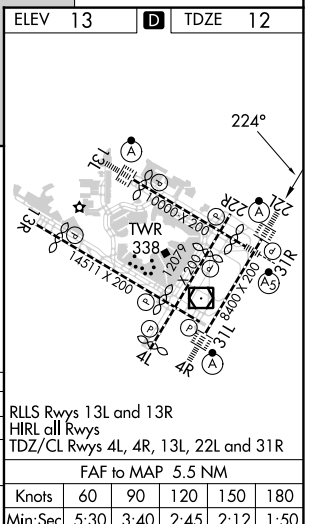
MISSED APPROACH: Climb to 500 then climbing left turn to 3000 on JFK VOR/DME R-190 to CHANT INT/19 DME and hold.

Simultaneous approach authorized.

D-ATIS (ARR/DEP) (ARR-NE) (ARR-SW)	NEW YORK APP CON	KENNEDY TOWER Rwys 4R/22L and 13L/31R	<b>119.1 281.55</b>	GND CON	CLNC DEL	CPDLC
<b>128.725 117.7 115.4</b>	<b>128.125 269.0</b>	Rwys 4L/22R and 13R/31L	<b>123.9 281.55</b>	<b>121.9 348.6</b>	<b>135.05 348.6</b>	



ELEV 13	TDZE 12																										
<table border="1"> <tr> <td>500</td> <td>3000</td> <td>CHANT INT</td> <td>VGSI and ILS glidepath not coincident (VGSI Angle 3.00/TCH 66).</td> <td>ROSLY INT HWY 12 RADAR</td> </tr> <tr> <td></td> <td>JFK R-190</td> <td></td> <td>ZALPO INT HWY 6.8 RADAR</td> <td></td> </tr> <tr> <td colspan="2">*LOC only.</td> <td>*HWY 1.4</td> <td>1800</td> <td>3000</td> </tr> <tr> <td colspan="2"></td> <td>IM</td> <td>1800</td> <td>GS 3.00° TCH 53</td> </tr> <tr> <td colspan="2"></td> <td>0.2</td> <td>1.2 NM</td> <td>4.1 NM</td> <td>5.2 NM</td> </tr> </table>		500	3000	CHANT INT	VGSI and ILS glidepath not coincident (VGSI Angle 3.00/TCH 66).	ROSLY INT HWY 12 RADAR		JFK R-190		ZALPO INT HWY 6.8 RADAR		*LOC only.		*HWY 1.4	1800	3000			IM	1800	GS 3.00° TCH 53			0.2	1.2 NM	4.1 NM	5.2 NM
500	3000	CHANT INT	VGSI and ILS glidepath not coincident (VGSI Angle 3.00/TCH 66).	ROSLY INT HWY 12 RADAR																							
	JFK R-190		ZALPO INT HWY 6.8 RADAR																								
*LOC only.		*HWY 1.4	1800	3000																							
		IM	1800	GS 3.00° TCH 53																							
		0.2	1.2 NM	4.1 NM	5.2 NM																						
CATEGORY	A	B	C	D																							
S-ILS 22L	212/18		200 (200-1/2)																								
S-LOC 22L	520/24	508 (600-1/2)	520/55	508 (600-1)																							
CIRCLING	640-1	627 (700-1)	680-1 3/4 667 (700-1 3/4)	680-2 667 (700-2)																							



NE-2, 26 DEC 2024 to 23 JAN 2025

NE-2, 26 DEC 2024 to 23 JAN 2025