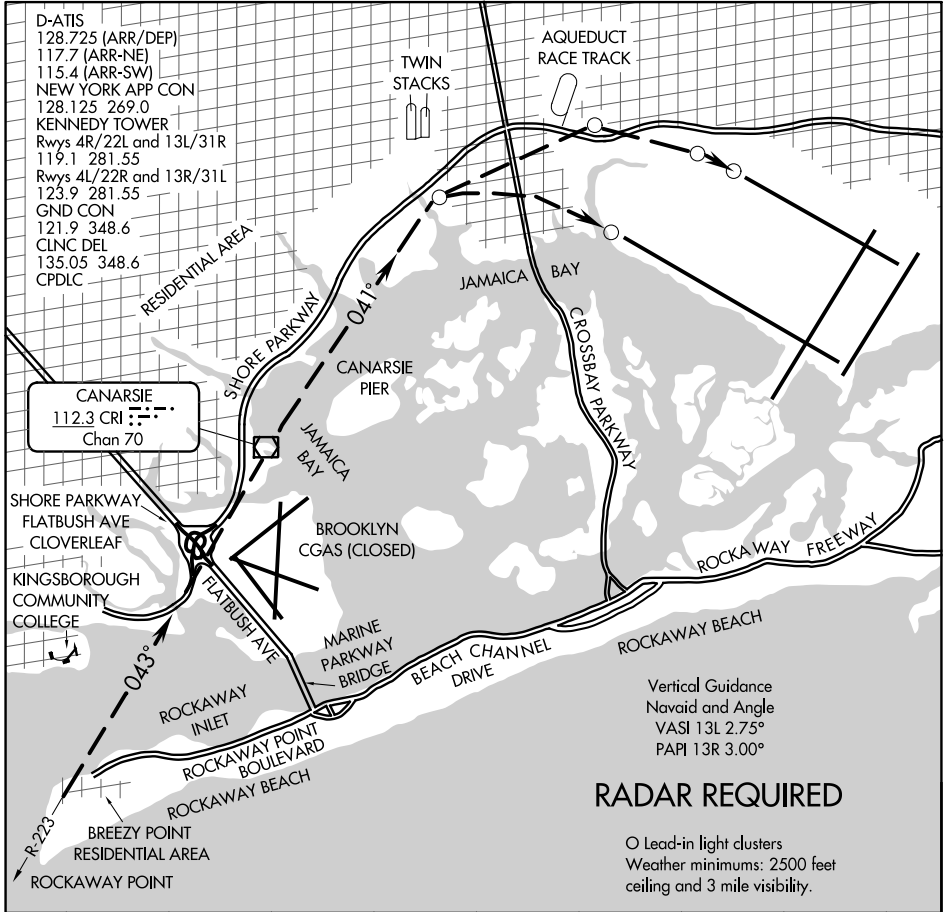


# PARKWAY VISUAL RWY 13L/R

AL-610 (FAA)

JOHN F KENNEDY INTL (JFK)  
NEW YORK, NEW YORK



NE-2, 26 DEC 2024 to 23 JAN 2025

NE-2, 26 DEC 2024 to 23 JAN 2025

1 NM	2	3	4	5	6	7	8
------	---	---	---	---	---	---	---

## PARKWAY VISUAL RUNWAY 13L/R

When cleared for Parkway Visual to Runway 13L/R maintain at or above 2000' until abeam Rockaway Point. Remain west of Rockaway Point, thence east of Kingsborough Community College. Remain east of the Shore Parkway. Cross Brooklyn Coast Guard Air Station at or above 1500'. Remain east of the Shore Parkway until Canarsie Pier.

Runway 13R continue descent between the Canarsie Pier and Twin Stacks.  
Runway 13L continue descent after passing the Twin Stacks.

# PARKWAY VISUAL RWY 13L/R

Amdt 1 29MAY14

NEW YORK, NEW YORK  
JOHN F KENNEDY INTL (JFK)