

APP CRS	Rwy Idg	<b>11010</b>
<b>044°</b>	TDZE	<b>13</b>
	Apt Elev	<b>13</b>

# RNAV (RNP) Z RWY 4L

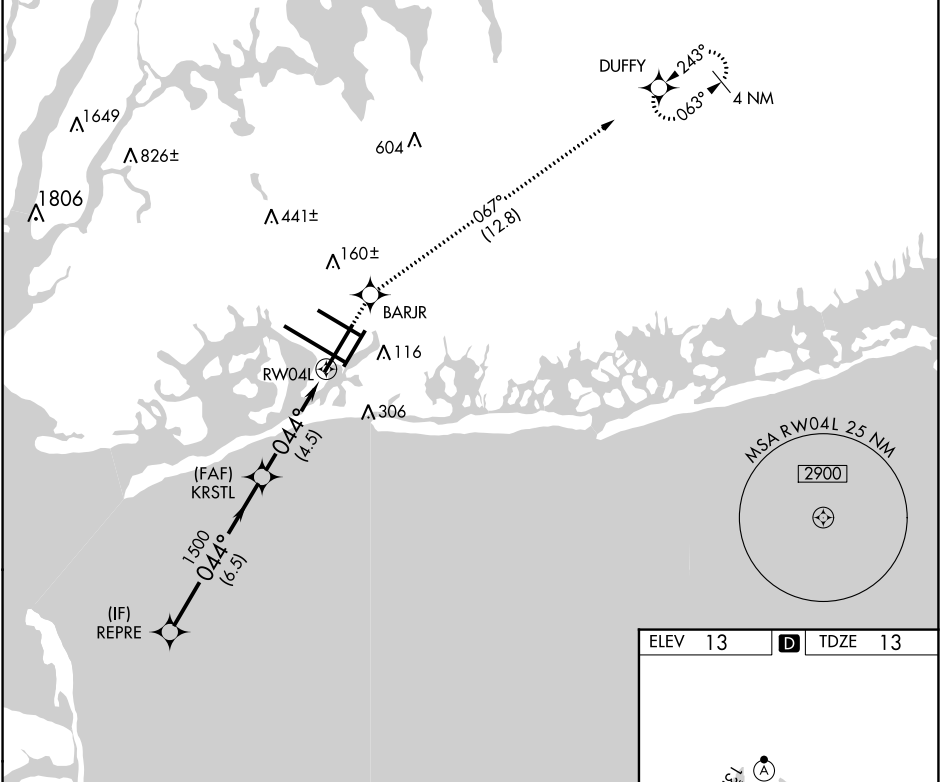
JOHN F KENNEDY INTL (JFK)

RNP AR APCH.

▼ For uncompensated Baro-VNAV systems, procedure NA below -12°C (11°F) or above 54°C (130°F). Simultaneous approach authorized.

MISSED APPROACH: Climb to 3000 direct BARJR and track 067° to DUFFY and hold.

D-ATIS (ARR/DEP) (ARR-NE) (ARR-SW)			NEW YORK APP CON		KENNEDY TOWER		GND CON	CLNC DEL	CPDLC
<b>128.725</b>	<b>117.7</b>	<b>115.4</b>	<b>128.125</b>	<b>269.0</b>	Rwys 4R/22L and 13L/31R	<b>119.1</b>	<b>281.55</b>	<b>121.9</b>	<b>135.05</b>
					Rwys 4L/22R and 13R/31L	<b>123.9</b>	<b>281.55</b>	<b>348.6</b>	<b>348.6</b>

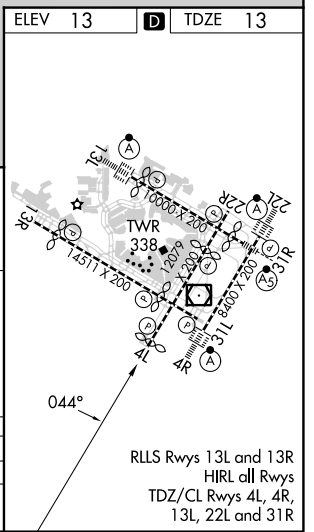
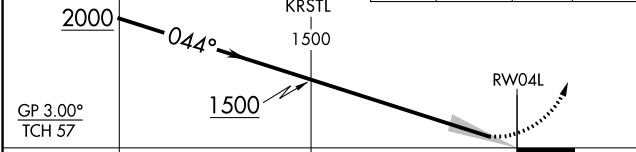


NE-2, 26 DEC 2024 to 23 JAN 2025

NE-2, 26 DEC 2024 to 23 JAN 2025

VGSI and RNAV glidepath not coincident (VGSI Angle 3.00/TCH 75).

3000	BARJR	DUFFY
↑	✧	✧
	tr	067°



CATEGORY	A	B	C	D
RNP 0.30 DA		331 / 50	318 (400-1)	

**AUTHORIZATION REQUIRED**