

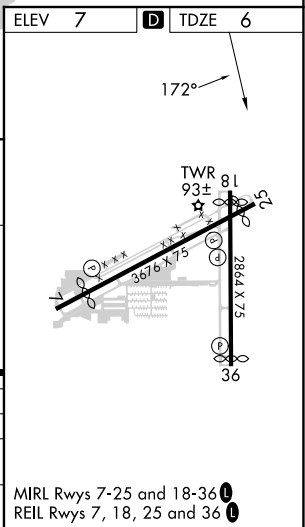
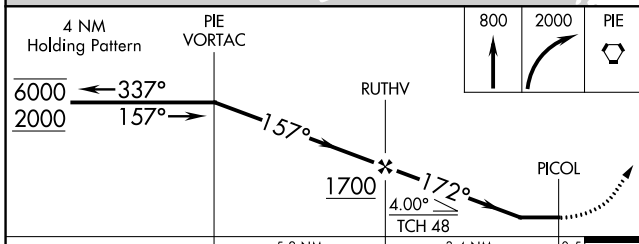
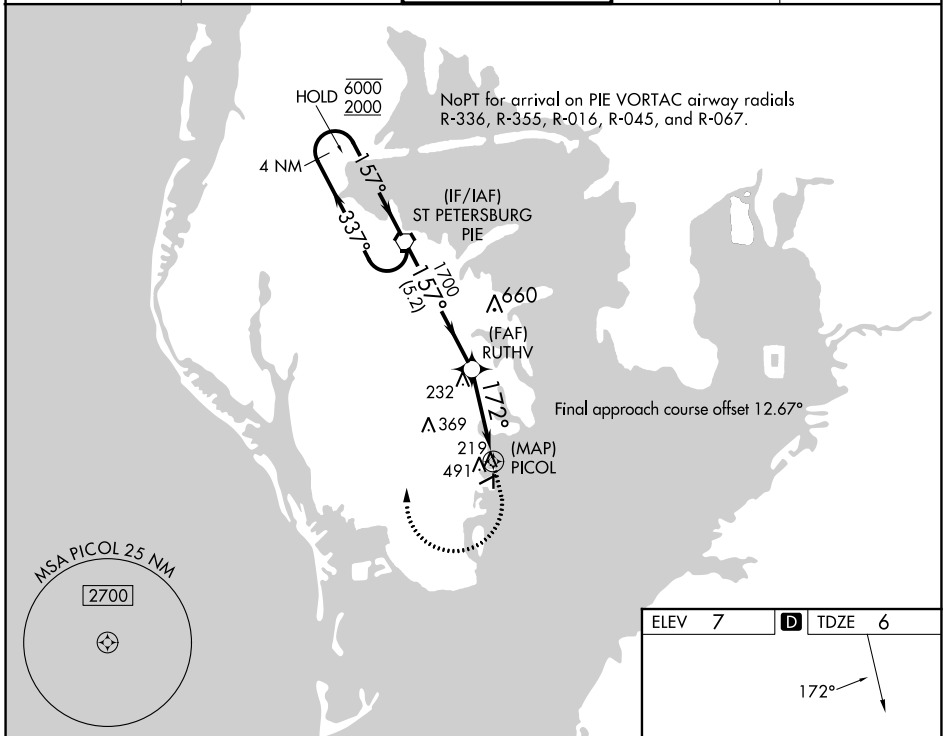
WAAS CH 77746 W18A	APP CRS 172°	Rwy ldg TDZE Apt Elev	2559 6 7
----------------------------------------	------------------------	-----------------------------	-------------------------------------

RNAV (GPS) RWY 18

ALBERT WHITTED (SPG)

RNP APCH - GPS.		MISSED APPROACH: Climb to 800 then climbing right turn to 2000 direct PIE VORTAC and hold.	
<p>⚠ Circling NA northwest of Rwy 7 and 18. Procedure NA at night. ⚠ Rwy 18 helicopter visibility reduction below 1 SM NA.</p>			

ASOS 118.875	TAMPA APP CON 119.65 316.05 (EAST) 125.3 316.05 (WEST)	WHITTED TOWER ★ 127.4 (CTAF) 257.6	GND CON 121.8	UNICOM 122.95
------------------------	----------------------------------------------------------------------------	----------------------------------------------	-------------------------	-------------------------



CATEGORY	A	B	C	D
LP MDA	480-1	474 (500-1)		NA
LNAV MDA	800-1 794 (800-1)	800-1¼ 794 (800-1¼)		NA
CIRCLING	800-1 793 (800-1)	800-1¼ 793 (800-1¼)		NA

MIRL Rwy 7-25 and 18-36
REIL Rwy 7, 18, 25 and 36

SE-3, 26 DEC 2024 to 23 JAN 2025

SE-3, 26 DEC 2024 to 23 JAN 2025