

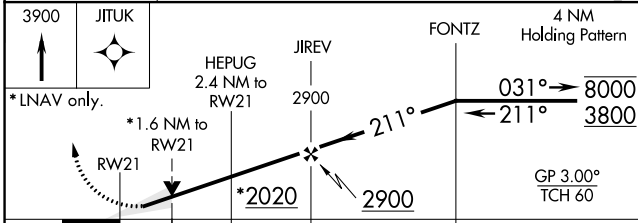
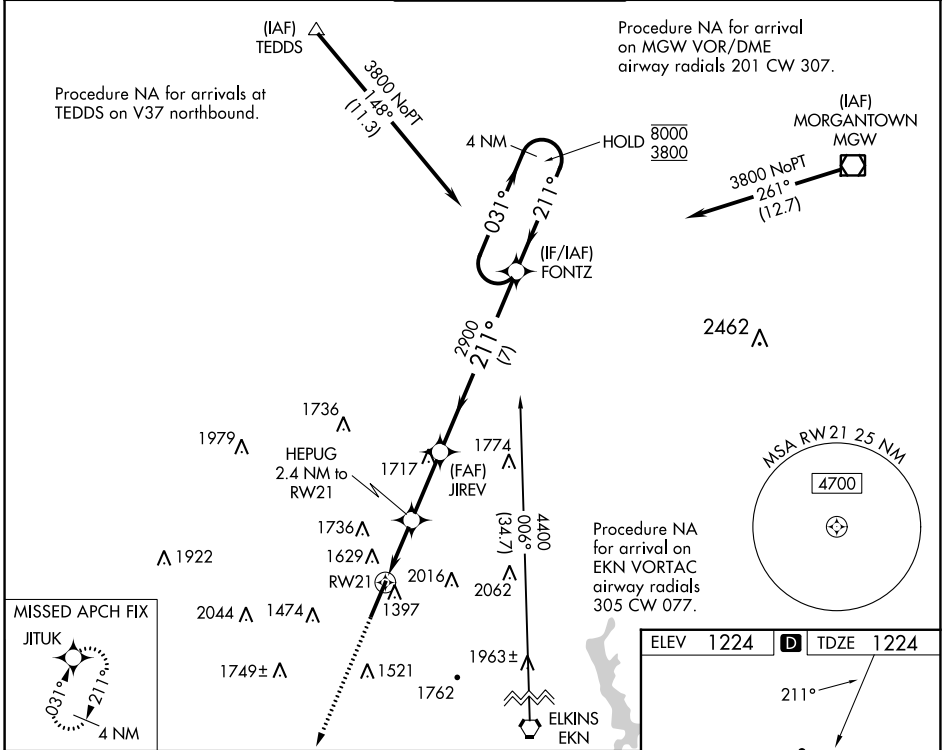
WAAS CH <b>82504</b> <b>W21A</b>	APP CRS <b>211°</b>	Rwy Idg TDZE Apt Elev	<b>7130</b> <b>1224</b> <b>1224</b>
--	------------------------	-----------------------------	---

# RNAV (GPS) RWY 21

NORTH CENTRAL WEST VIRGINIA (CKB)

RNP APCH.		MALSRR	MISSED APPROACH: Climb to 3900 direct JITUK and hold.
<p>▼ For uncompensated Baro-VNAV systems, LNAV/VNAV NA below -16°C or above 54°C. For inop ALS, increase LNAV Cats C and D visibility to 1½ SM.</p>			

ATIS <b>127.825</b>	CLARKSBURG APP CON ★ <b>121.15 284.65</b>	CLARKSBURG TOWER ★ <b>126.7 (CTAF) 257.925</b>	GND CON <b>121.9</b>	UNICOM <b>123.0</b>
------------------------	--	---	-------------------------	------------------------



ELEV 1224	<b>D</b>	TDZE 1224
-----------	----------	-----------

TWR 1248

7800 X 150

0.5% UP

REIL Rwy 3 1

HIRL Rwy 3-21 1

CATEGORY	A	B	C	D
LPV DA		1424/24	200 (200-½)	
LNAV/VNAV DA		1786-1¾	562 (600-1¾)	
LNAV MDA	1800/24	576 (600-½)	1800-1¼	576 (600-1¼)
<b>C</b> CIRCLING	1940-1 716 (800-1)	2040-1¼ 816 (900-1¼)	2320-3	1096 (1100-3)

NE-4, 26 DEC 2024 to 23 JAN 2025

NE-4, 26 DEC 2024 to 23 JAN 2025