

WAAS CH 65914 W36A	APP CRS 005°	Rwy Idg 7652 TDZE 782 Apt Elev 782
--	------------------------	---

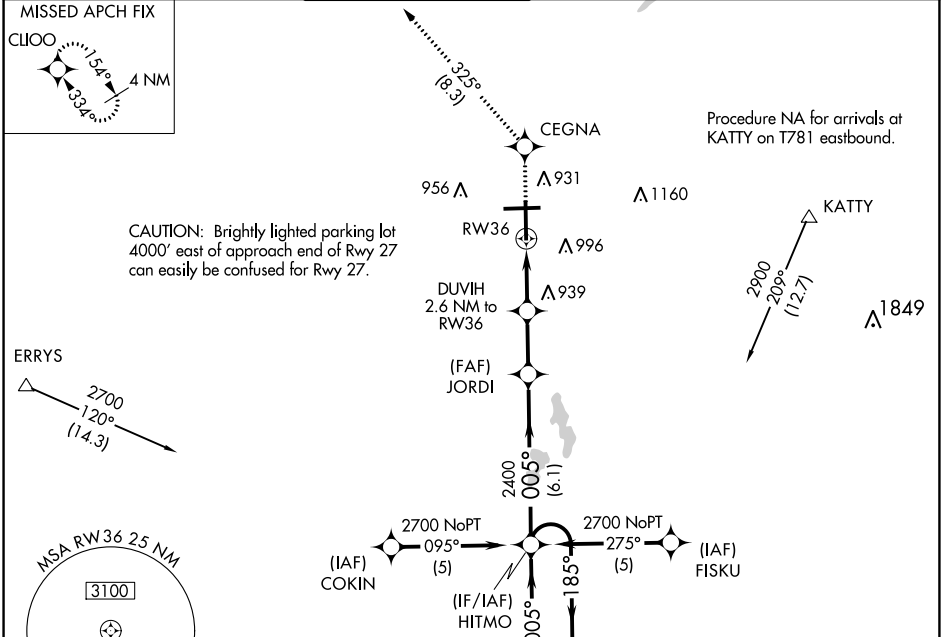
RNAV (GPS) RWY 36

BISHOP INTL (F'NT)

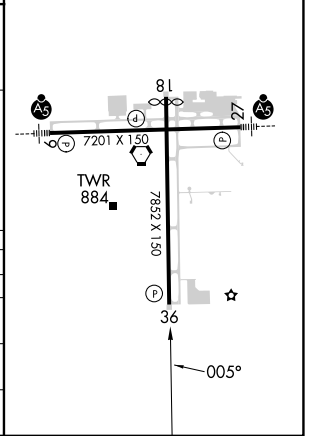
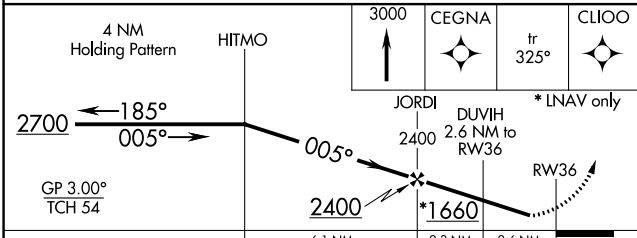
⚠ For uncompensated Baro-VNAV systems, LNAV/VNAV NA below -16°C (4°F) or above 54°C (130°F). Rwy 36 helicopter visibility reduction below ¾ SM NA. DME/DME RNP -0.3 NA.

⚠ MISSED APPROACH: Climb to 3000 direct CEGNA and on track 325° to CLIOO and hold.

ATIS 133.15	GREAT LAKES APP CON * 118.8 257.9	FLINT TOWER * 126.3 (CTAF) 257.9	GND CON 121.9	CLNC DEL 121.75	UNICOM 122.95
-----------------------	---	--	-------------------------	---------------------------	-------------------------



ELEV 782	D	TDZE 782
HIRL Rwy 9-27 and 18-36 Ⓛ REIL Rwy 18 and 36 Ⓛ		



CATEGORY	A	B	C	D
LPV DA	1123-1¼ 341 (400-1¼)			
LNAV/VNAV DA	1254-1¾ 472 (500-1¾)			
LNAV MDA	1260-1	478 (500-1)	1260-1¾ 478 (500-1¾)	1260-1½ 478 (500-1½)
C CIRCLING	1260-1 478 (500-1)	1300-1 518 (600-1)	1300-1½ 518 (600-1½)	1520-2¼ 738 (800-2¼)

EC-1, 26 DEC 2024 to 23 JAN 2025

EC-1, 26 DEC 2024 to 23 JAN 2025