


WAAS CH 57928 W13A	APP CRS 129°	Rwy Idg TDZE Apt Elev	5099 881 881
--	------------------------	-----------------------------	---

RNAV (GPS) RWY 13

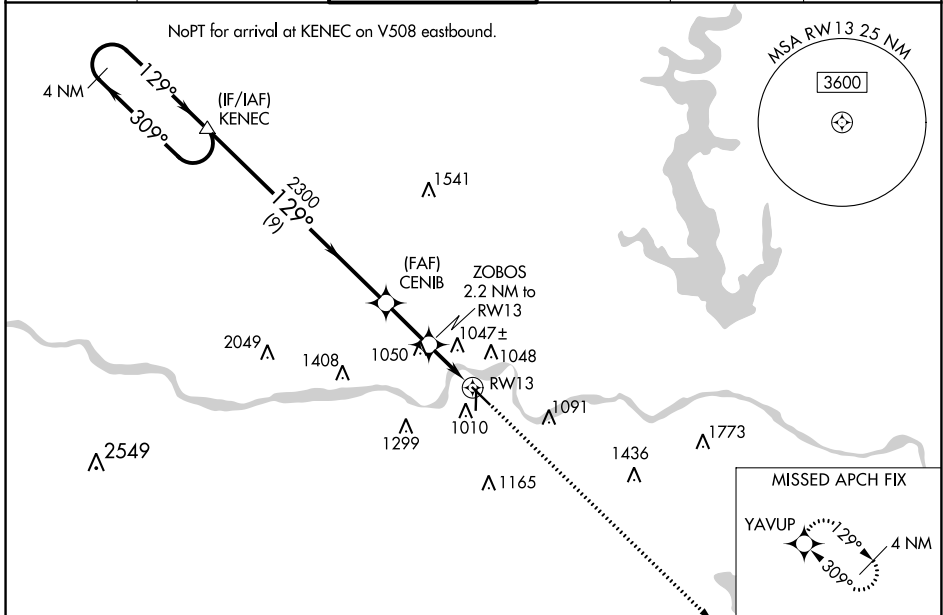
PHILIP BILLARD MUNI (TOP)

▽ For uncompensated Baro-VNAV systems, LNAV/VNAV NA below -18°C (0°F) or above 54°C (130°F). DME/DME RNP-0.3 NA.
For inop ALS, increase LNAV/VNAV all Cats visibility to ¾ SM and LNAV Cat C visibility to 1½ SM.

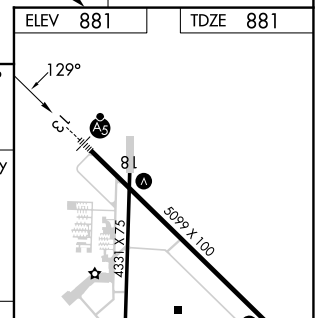
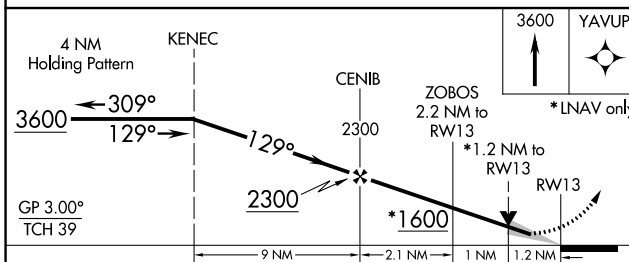
MALSR 

MISSED APPROACH: Climb to 3600 direct YAVUP and hold.

ASOS 121.275	KANSAS CITY CENTER 123.8 343.7	TOPEKA TOWER★ 118.7 (CTAF) 0 257.8	GND CON 121.9	CLNC DEL 121.9	UNICOM 122.95
------------------------	--	--	-------------------------	--------------------------	-------------------------



ELEV	881	TDZE	881
------	------------	------	------------



CATEGORY	A	B	C	D
LPV DA	1091-½	210 (300-½)		NA
LNAV/VNAV DA	1135-½	254 (300-½)		NA
LNAV MDA	1300-½	419 (500-½)	1300-¾ 419 (500-¾)	NA
C CIRCLING	1360-1 479 (500-1)	1440-1 559 (600-1)	1600-2 719 (800-2)	NA

HIRL Rwy 13-31 **0**

REIL Rwy 18 and 31 **0**

MIRL Rwy 18-36 **0**

NC-2, 26 DEC 2024 to 23 JAN 2025

NC-2, 26 DEC 2024 to 23 JAN 2025