

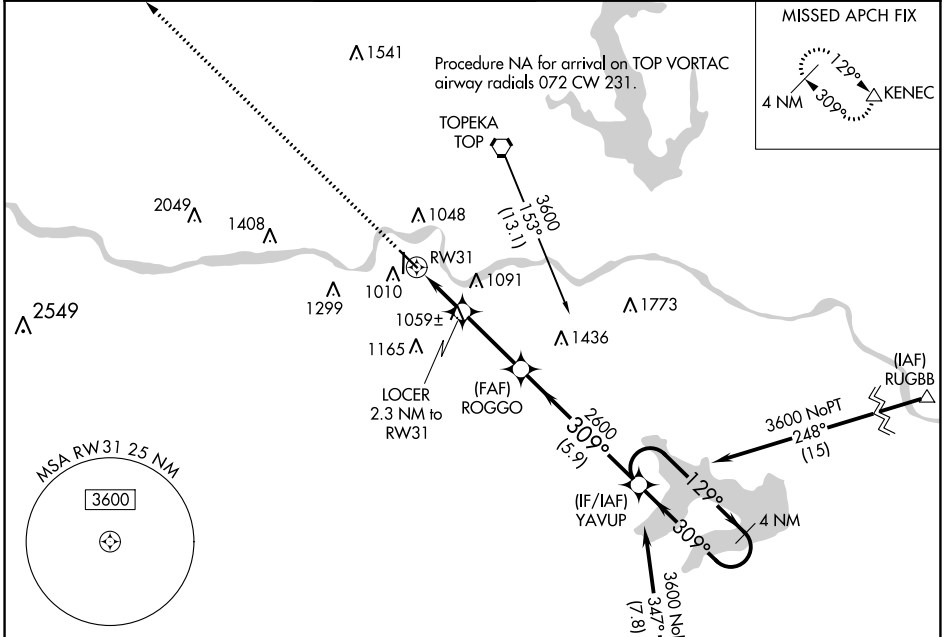
WAAS CH 69627 W31A	APP CRS 309°	Rwy Idg TDZE Apt Elev	5099 880 881
--	------------------------	-----------------------------	---

RNAV (GPS) RWY 31

PHILIP BILLARD MUNI (TOP)

DME/DME RNP-0.3 NA.		MISSED APPROACH: Climb to 3600 direct KENEC and hold.			
---------------------	--	---	--	--	--

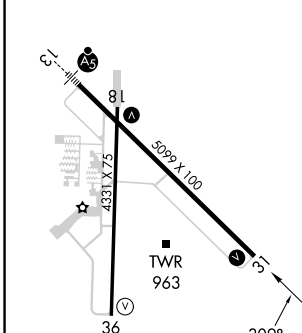
ASOS 121.275	KANSAS CITY CENTER 123.8 343.7	TOPEKA TOWER ★ 118.7 (CTAF) 0 257.8	GND CON 121.9	CLNC DEL 121.9	UNICOM 122.95
------------------------	--	---	-------------------------	--------------------------	-------------------------



NC-2, 26 DEC 2024 to 23 JAN 2025

NC-2, 26 DEC 2024 to 23 JAN 2025

ELEV 881	TDZE 880
----------	----------



CATEGORY	A	B	C	D
LP MDA	1320-1	440 (500-1)	1320-1 ³ / ₈ 440 (500-1 ³ / ₈)	NA
LNAV MDA	1340-1	460 (500-1)	1340-1 ³ / ₈ 460 (500-1 ³ / ₈)	NA
<input checked="" type="checkbox"/> CIRCLING	1360-1 479 (500-1)	1440-1 559 (600-1)	1600-2 719 (800-2)	NA

HIRL Rwy 13-31
REIL Rwy 18 and 31
MIRL Rwy 18-36

TOPEKA, KANSAS
Amdt 1B 29MAR18

39°04'N-95°37'W

PHILIP BILLARD MUNI (TOP)

RNAV (GPS) RWY 31