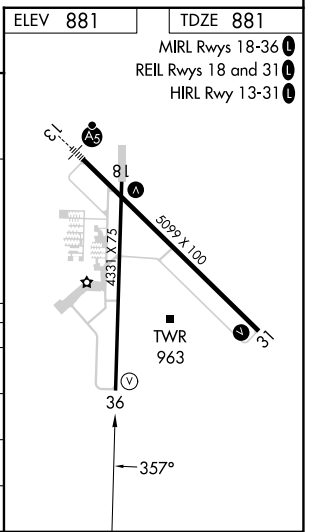
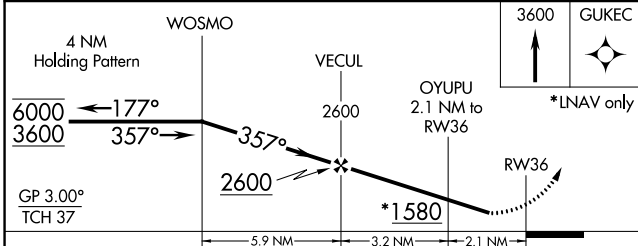
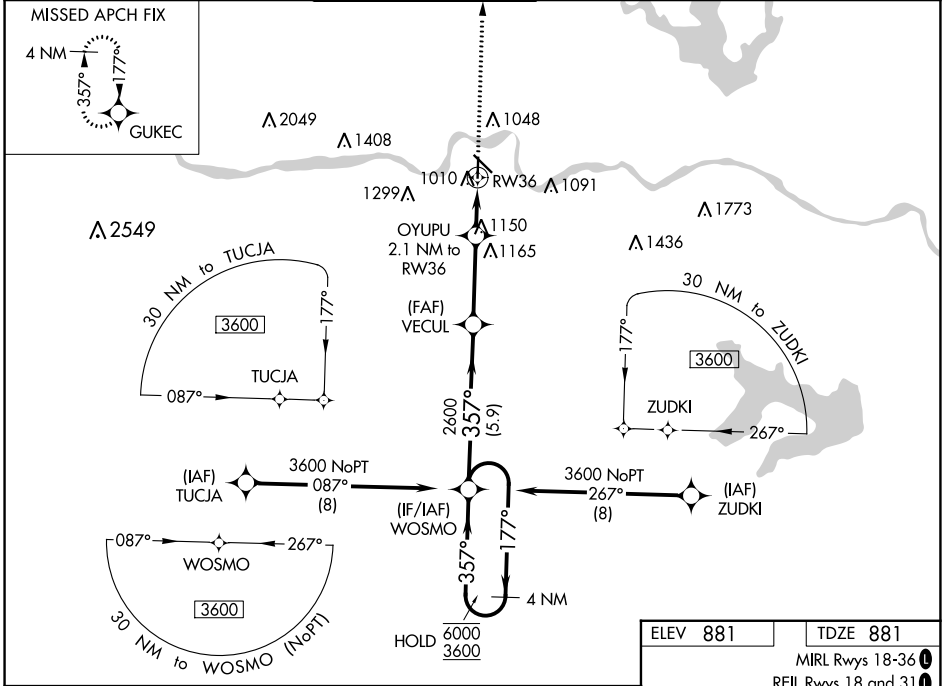


WAAS CH 99634 W36A	APP CRS 357°	Rwy Idg 4331 TDZE 881 Apt Elev 881
--	------------------------	---

RNAV (GPS) RWY 36

PHILIP BILLARD MUNI (TOP)

RNP APCH.		MISSED APPROACH: Climb to 3600 direct GUKEC and hold.				
<p>▼ Rwy 36 helicopter visibility reduction below 3/4 SM NA. For uncompensated Baro-VNAV systems, LNAV/VNAV NA below -19°C or above 54°C.</p>		<p>TOPEKA TOWER * 118.7 (CTAF) 0 257.8</p>		GND CON 121.9	CLNC DEL 121.9	UNICOM 122.95



CATEGORY	A	B	C	D
LPV DA	1254-1 1/4	373 (400-1 1/4)		NA
LNAV/VNAV DA	1394-1 3/4	513 (600-1 3/4)		NA
LNAV MDA	1460-1	579 (600-1)	1460-1 5/8 579 (600-1 5/8)	NA
CIRCLING	1460-1	579 (600-1)	1600-2 719 (800-2)	NA

NC-2, 26 DEC 2024 to 23 JAN 2025

NC-2, 26 DEC 2024 to 23 JAN 2025