

TYLER, TEXAS

AL-622 (FAA)

23278

LOC/DME I-TYR 111.95 Chan 56 (Y)	APP CRS 042°	Rwy Idg TDZE Apt Elev	7734 542 544
---	------------------------	-----------------------------	---

ILS or LOC RWY 4

TYLER POUNDS RGNL (TYR)

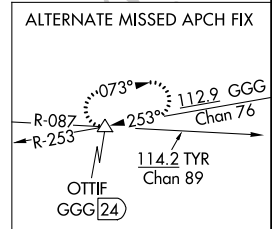
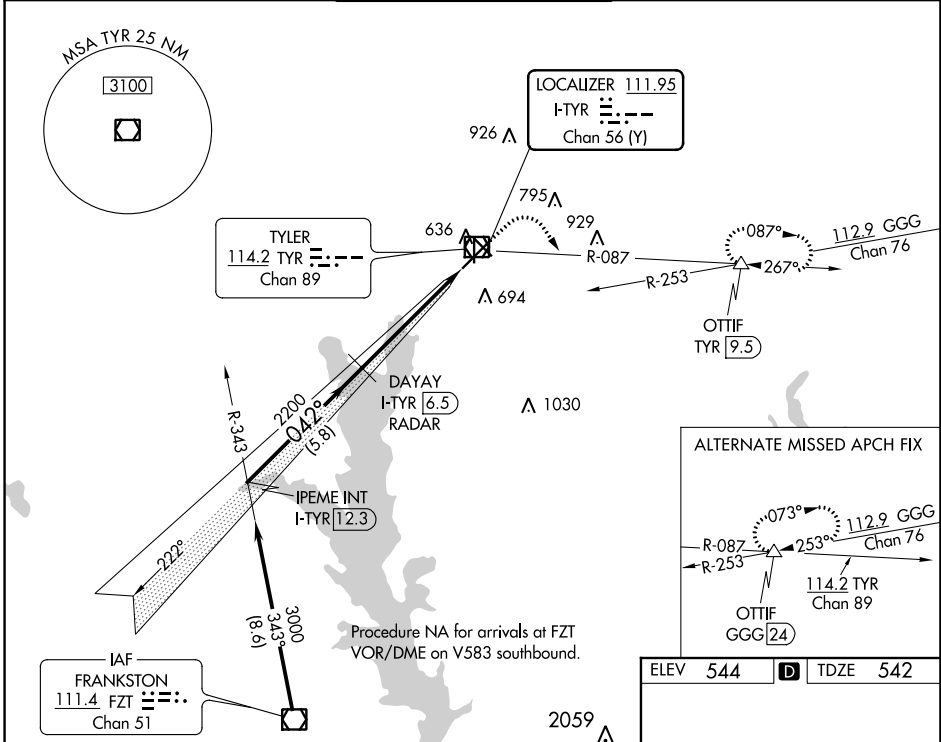
DME required.

For inop ALS increase S-LOC 4 Cat C/D visibility to 1 SM.

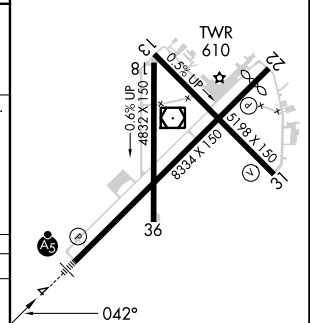
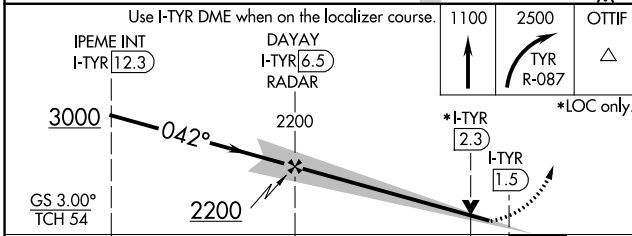


MISSED APPROACH: Climb to 1100 then climbing right turn to 2500 on TYR VOR/DME R-087 to OTTIF/TYR 9.5 DME and hold.

ATIS 126.25	LONGVIEW APP CON * 128.75 379.15	POUNDS TOWER * 120.1 (CTAF) 257.8	GND CON 121.9	UNICOM 122.95
-----------------------	--	---	-------------------------	-------------------------



ELEV 544	TDZE 542
----------	----------



CATEGORY	A	B	C	D
S-ILS 4	742-1/2		200 (200-1/2)	
S-LOC 4	900-1/2	358 (400-1/2)	900-5/8	358 (400-5/8)
CIRCLING	980-1 436 (500-1)	1020-1 476 (500-1)	1160-1 3/4 616 (700-1 3/4)	1280-2 1/4 736 (800-2 1/4)

REIL Rwy 22
MIRL Rwy 18-36
HIRL Rws 4-22 and 13-31

TYLER, TEXAS
Orig-A 20APR23

32°21'N-95°24'W

TYLER POUNDS RGNL (TYR)

ILS or LOC RWY 4

SC-2, 26 DEC 2024 to 23 JAN 2025

SC-2, 26 DEC 2024 to 23 JAN 2025