

TYLER, TEXAS

AL-622 (FAA)

23278

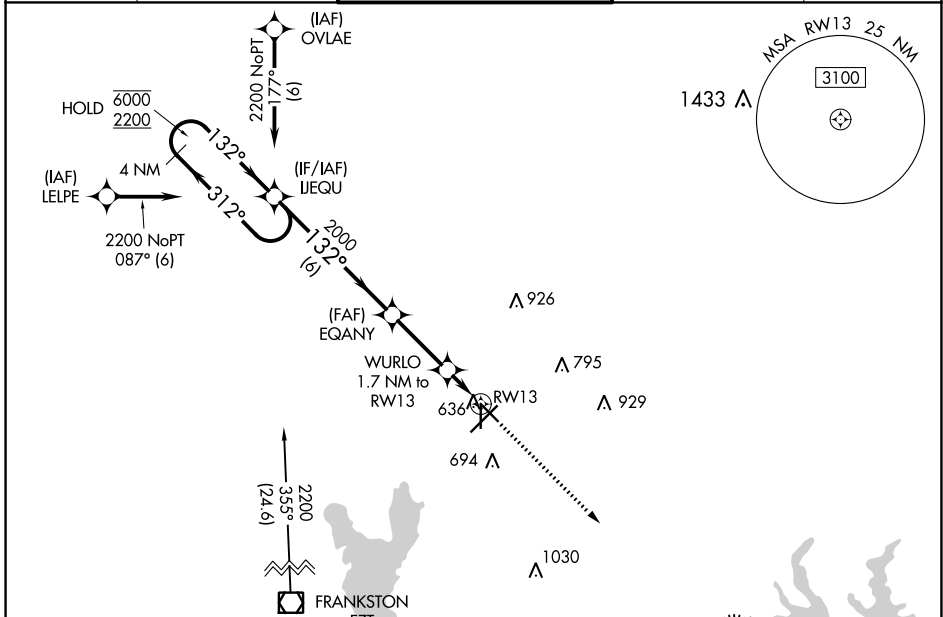
WAAS CH <b>45701</b> <b>W13A</b>	APP CRS <b>132°</b>	Rwy Idg <b>5198</b> TDZE <b>539</b> Apt Elev <b>544</b>
--	------------------------	---

# RNAV (GPS) RWY 13

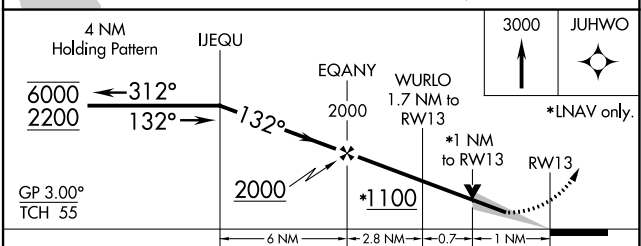
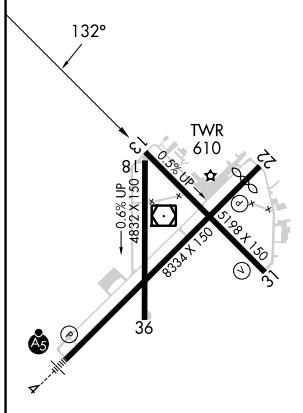
TYLER POUNDS RGNL (TYR)

RNP APCH.		MISSED APPROACH: Climb to 3000 direct JUHWO and hold.		
<p>▼ For uncompensated Baro-VNAV systems, LNAV/VNAV NA below -5°C or above 54°C.</p>				

ATIS <b>126.25</b>	LONGVIEW APP CON * <b>128.75 379.15</b>	POUNDS TOWER* <b>120.1(CTAF) 257.8</b>	GND CON <b>121.9</b>	UNICOM <b>122.95</b>
-----------------------	--	---	-------------------------	-------------------------



ELEV <b>544</b>	<b>D</b>	TDZE <b>539</b>
-----------------	----------	-----------------



CATEGORY	A	B	C	D
LPV DA		739-3/4	200 (200-3/4)	
LNAV/VNAV DA		820-7/8	281 (300-7/8)	
LNAV MDA		900-1	361 (400-1)	
<b>C</b> CIRCLING	980-1 436 (500-1)	1020-1 476 (500-1)	1160-1 3/4 616 (700-1 3/4)	1280-2 1/4 736 (800-2 1/4)

REIL Rwy 22  
MIRL Rwy 18-36  
HIRL Rwy 4-22 and 13-31

TYLER, TEXAS  
Amdt 3A 08OCT20

32°21'N-95°24'W

## TYLER POUNDS RGNL (TYR) RNAV (GPS) RWY 13

SC-2, 26 DEC 2024 to 23 JAN 2025

SC-2, 26 DEC 2024 to 23 JAN 2025