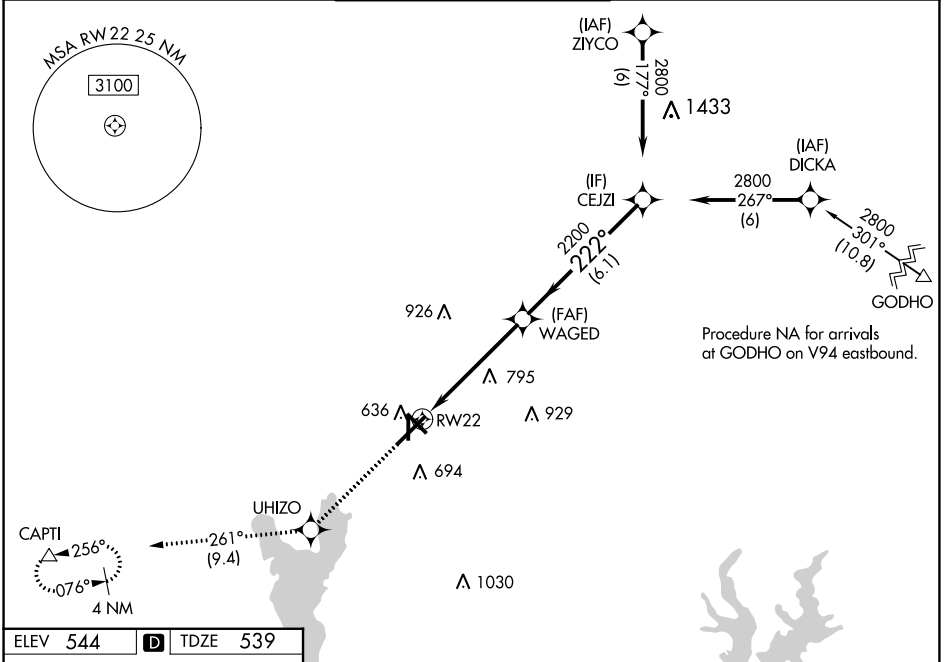


WAAS CH 45514 W22A	APP CRS 222°	Rwy Idg TDZE Apt Elev	7734 539 544
--	------------------------	-----------------------------	---

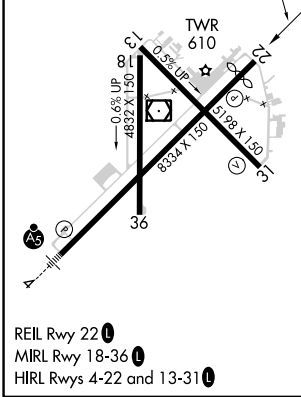
RNAV (GPS) RWY 22

TYLER POUNDS RGNL (TYR)

RNP APCH.		MISSED APPROACH: Climb to 2500 direct UHIZO and on track 261° to CAPTI and hold.		
<p>▼ For uncompensated Baro-VNAV systems, LNAV/VNAV NA below -5°C or above 54°C.</p>				
ATIS 126.25	LONGVIEW APP CON* 128.75 379.15	POUNDS TOWER* 120.1 (CTAF) 257.8	GND CON 121.9	UNICOM 122.95



ELEV 544	D	TDZE 539
-----------------	----------	-----------------



2500	UHIZO	tr 261°	CAPTI
*LNAV only.			
RW22		WAGED	CEJZI
*1.4 NM to RW22		2200	2800
GP 3.00° TCH 54			
CATEGORY	A	B	C
LPV DA	739-3/4		200 (200-3/4)
LNAV/VNAV DA	807-7/8		268 (300-7/8)
LNAV MDA	1040-1	501 (500-1)	1040-1 3/8 501 (500-1 3/8)
C CIRCLING	1040-1	496 (500-1)	1160-1 3/4 616 (700-1 3/4) 1280-2 1/4 736 (800-2 1/4)

SC-2, 26 DEC 2024 to 23 JAN 2025

SC-2, 26 DEC 2024 to 23 JAN 2025