

TYLER, TEXAS

AL-622 (FAA)

23278

WAAS CH <b>73037</b> <b>W36A</b>	APP CRS <b>357°</b>	Rwy Idg TDZE Apt Elev	<b>4832</b> <b>544</b> <b>544</b>
--	------------------------	-----------------------------	---

# RNAV (GPS) RWY 36

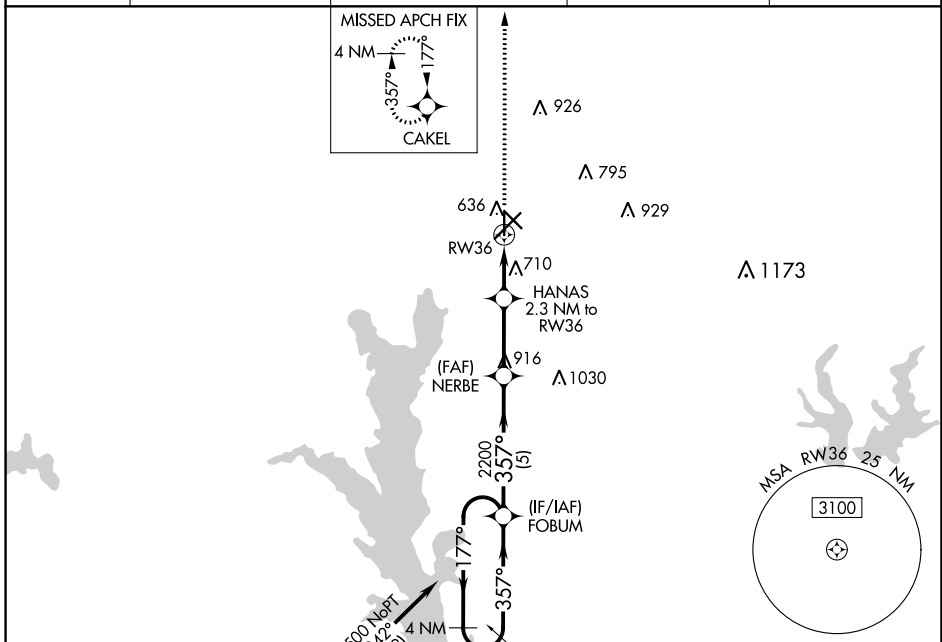
TYLER POUNDS RGNL (TYR)

RNP APCH.

**▼** Rwy 36 helicopter visibility reduction below 3/4 SM NA. For uncompensated Baro-VNAV systems, LNAV/VNAV NA below -6°C or above 54°C

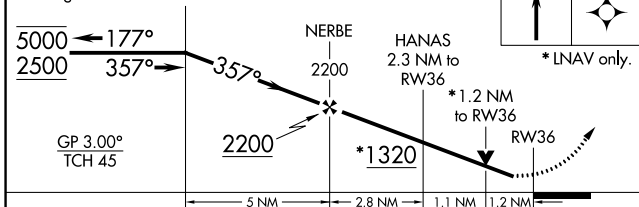
**▲** MISSED APPROACH: Climb to 2500 direct CAKEL and hold.

ATIS <b>126.25</b>	LONGVIEW APP CON ★ <b>128.75 379.15</b>	POUNDS TOWER ★ <b>120.1 (CTAF) 0 257.8</b>	GND CON <b>121.9</b>	UNICOM <b>122.95</b>
-----------------------	--	---	-------------------------	-------------------------

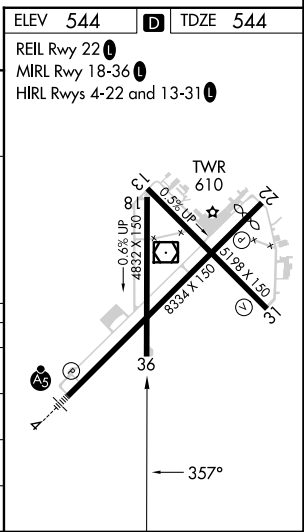


ELEV 544	<b>D</b> TDZE 544
----------	-------------------

REIL Rwy 22 **①**  
MIRL Rwy 18-36 **①**  
HIRL Rws 4-22 and 13-31 **①**



CATEGORY	A	B	C	D
LPV DA		794-1	250 (300-1)	
LNAV/VNAV DA		799-1	255 (300-1)	
LNAV MDA	960-1	416 (500-1)	960-1 1/8	416 (500-1 1/8)
<b>C</b> CIRCLING	980-1 436 (500-1)	1020-1 476 (500-1)	1160-1 3/4 616 (700-1 3/4)	1280-2 1/4 736 (800-2 1/4)



TYLER, TEXAS  
Amdt 1A 25FEB21

32°21'N-95°24'W

# TYLER POUNDS RGNL (TYR) RNAV (GPS) RWY 36

SC-2, 26 DEC 2024 to 23 JAN 2025

SC-2, 26 DEC 2024 to 23 JAN 2025