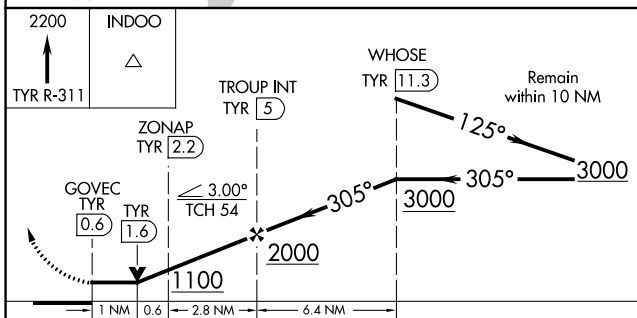
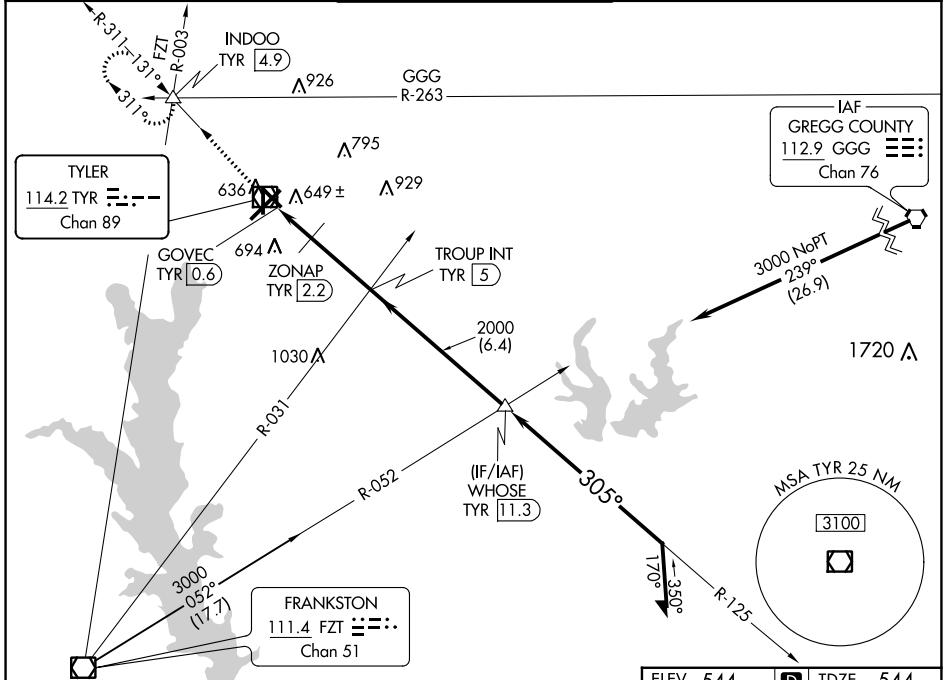


VOR/DME TYR	APP CRS	Rwy Idg	5198
114.2	305°	TDZE	544
Chan 89		Apt Elev	544

# VOR RWY 31

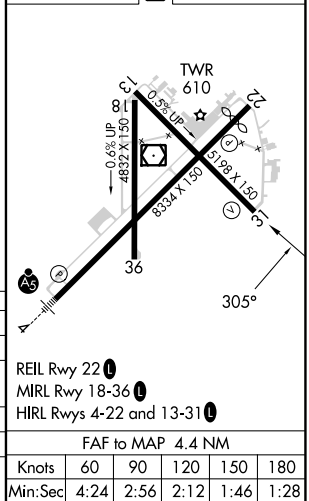
TYLER POUNDS RGNL (TYR)

Rwy 31 helicopter visibility reduction below 3/4 SM NA.		MISSED APPROACH: Climb to 2200 on TYR VOR/DME R-311 to INDOO INT/4.9 DME and hold.		
ATIS <b>126.25</b>	LONGVIEW APP CON ★ <b>128.75 379.15</b>	POUNDS TOWER ★ <b>120.1 (CTAF) 257.8</b>	GND CON <b>121.9</b>	UNICOM <b>122.95</b>



ELEV 544	<b>D</b> TDZE 544
----------	-------------------

CATEGORY	A	B	C	D
S-31	1100-1	556 (600-1)	1100-1 1/2	556 (600-1 1/2)
<b>C</b> CIRCLING	1100-1	556 (600-1)	1160-1 1/4 616 (700-1 1/4)	1280-2 1/4 736 (800-2 1/4)
ZONAP FIX MINIMUMS (DME REQUIRED)				
S-31	920-1 376 (400-1)			
<b>C</b> CIRCLING	980-1 436 (500-1)	1020-1 476 (500-1)	1160-1 1/4 616 (700-1 1/4)	1280-2 1/4 736 (800-2 1/4)



SC-2, 26 DEC 2024 to 23 JAN 2025

SC-2, 26 DEC 2024 to 23 JAN 2025