

APP CRS	Rwy Idg	5107
233°	TDZE	128
	Apt Elev	132

RNAV (GPS) RWY 23

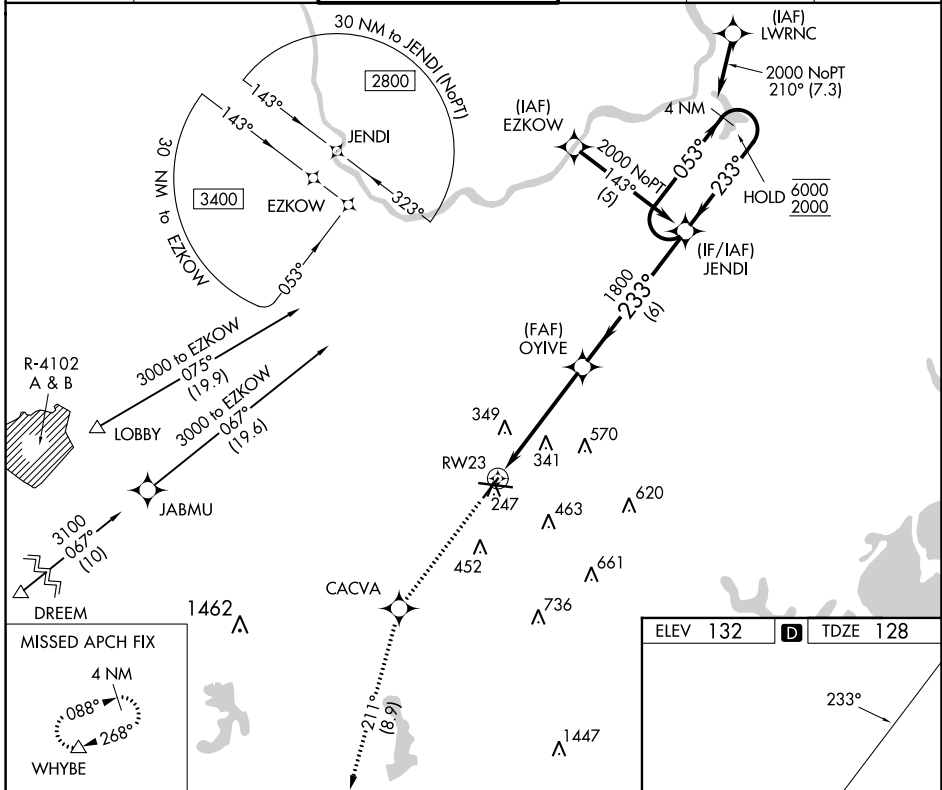
LAURENCE G HANSCOM FLD (BED)

RNP APCH - GPS.

⚠ Rwy 23 helicopter visibility reduction below 3/4 SM NA.

MISSED APPROACH: Climb to 3000 direct CACVA and on track 211° to WHYBE and hold.

ATIS 124.6	BOSTON APP CON 124.4 279.6	HANSCOM TOWER ★ 118.5 (CTAF) 257.2	GND CON 121.7	CLNC DEL 121.85	UNICOM 122.95
----------------------	--------------------------------------	--	-------------------------	---------------------------	-------------------------



3000	CACVA	tr 211°	WHYBE	VGSI and descent angles not coincident (VGSI Angle 3.20/TCH 55).	4 NM Holding Pattern
↑	✧		△		
1.6 NM to RWY 23		OYIVE		JENDI	
RWY 23		1800		6000 / 2000	
-1.6 NM		3.5 NM		6 NM	
3.04° TCH 53		233°		053°	

ELEV 132	D	TDZE 128
----------	----------	----------

The inset chart provides a detailed view of the RWY 23 area. It shows the runway (RWY 23) and the associated navigational aids: VORTAC (JENDI), TIS-E (JENDI), TIS-D (OYIVE), and TIS-R (RWY 23). The chart also shows the runway layout, including the taxiway (TWY 247) and the runway width (7011 X 150). The chart includes various altitudes (132, 128, 130, 150, 200, 247, 291, 300, 350) and headings (233°, 053°, 291°).

CATEGORY	A	B	C	D
LNAV MDA	640-1	512 (600-1)	640-1 3/8	512 (600-1 3/8)
C CIRCLING	740-1 608 (700-1)	800-1 668 (700-1)	880-2 1/4 748 (800-2 1/4)	920-2 1/2 788 (800-2 1/2)

NE-1, 26 DEC 2024 to 23 JAN 2025

NE-1, 26 DEC 2024 to 23 JAN 2025