

LOC/DME I-VXO <b>110.55</b> Chan 42 (Y)	APP CRS <b>133°</b>	Rwy Idg TDZE <b>344</b> Apt Elev <b>344</b>
---	------------------------	---

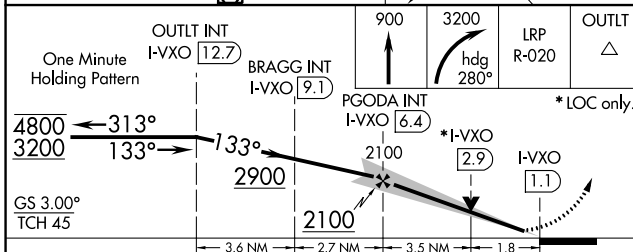
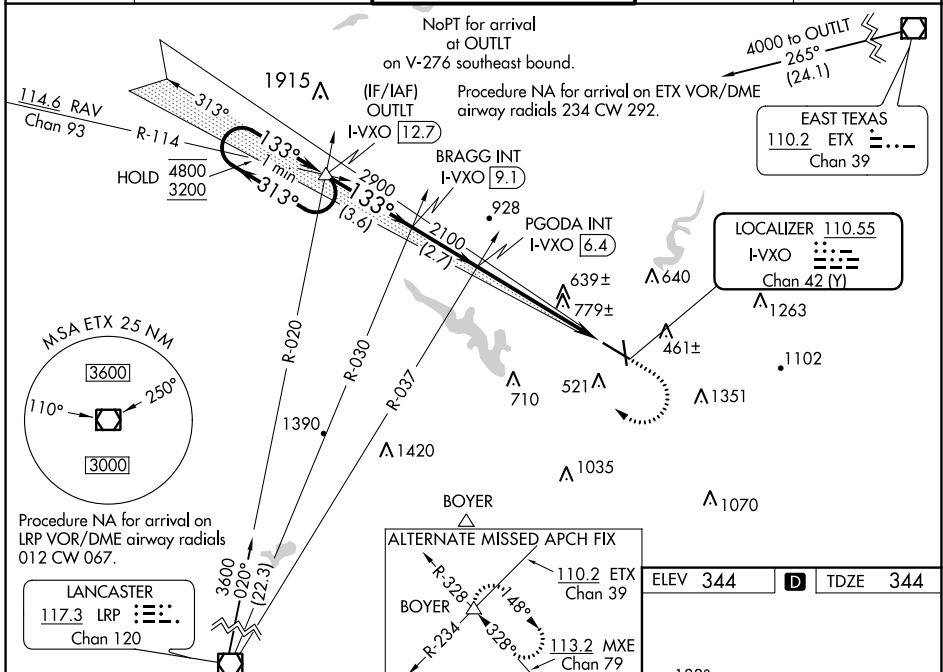
# ILS or LOC RWY 13

READING RGNL/CARL A SPAATZ FLD (RDG)

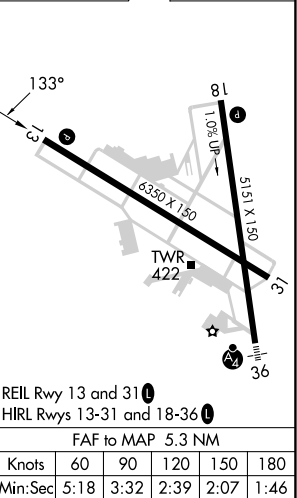
**⚠** Circling Rwy 18, 31 NA at night. Helicopter visibility reduction below 3/4 SM NA. VDP NA when using Harrisburg Intl altimeter setting. When local altimeter setting not received, use Harrisburg Intl altimeter setting and increase S-ILS 13 Cat A DA to 637 feet and visibility 1/2 SM, Cat B DA to 652 feet and visibility 1/2 SM, Cat C and D DA to 687 feet and visibility 1/4 SM, and increase all MDA 100 feet and S-LOC 13 Cat C visibility 1/4 SM, Circling Cats B and C visibility 1/4 SM.

**MISSED APPROACH:** Climb to 900 then climbing right turn to 3200 on heading 280° and LRP VOR/DME R-020 to OUTLT INT/I-VXO 12.7 DME and hold.

ATIS <b>127.1</b>	READING APP CON ★ <b>125.15 257.9</b>	READING TOWER ★ <b>119.9 (CTAF) 288.3</b>	GND CON <b>121.9</b>	UNICOM <b>122.95</b>
----------------------	--	--	-------------------------	-------------------------



ELEV 344	<b>D</b>	TDZE 344
----------	----------	----------



CATEGORY	A	B	C	D
S-ILS 13	544-3/4 200 (200-3/4)	559-3/4 215 (300-3/4)	594-3/4 250 (300-3/4)	250 (300-3/4)
S-LOC 13	980-1 636 (700-1)	980-1 636 (700-1)	980-2 636 (700-2)	980-2 636 (700-2)
CIRCLING	1020-1 676 (700-1)	1080-1 736 (800-1)	1280-2 3/4 936 (1000-2 3/4)	1660-3 1316 (1400-3)

REIL Rwy 13 and 31 HIRL Rws 13-31 and 18-36 FAF to MAP 5.3 NM
Knots Min:Sec 5:18 3:32 2:39 2:07 1:46

NE-4, 26 DEC 2024 to 23 JAN 2025

NE-4, 26 DEC 2024 to 23 JAN 2025